

À des fins de recherche uniquement

# Anticorps Monoclonal anti-EPHA1-specific



Numéro de catalogue: 60155-2-Ig **1 Publications**

## Informations de base

<b>Numéro de catalogue:</b> 60155-2-Ig	<b>Numéro d'acquisition GenBank:</b> BC130291	<b>Méthode de purification:</b> Précipitation de l'acide caprylique/du sulfate d'ammonium
<b>Taille:</b> 150ul , Concentration: 1100 µg/ml by Nanodrop and 1000 µg/ml by Bradford method using BSA as the standard;	<b>Identification du gène (NCBI):</b> 2041	<b>CloneNo.:</b> 1B7C3
<b>Hôte:</b> Mouse	<b>Nom complet:</b> EPH receptor A1	<b>Dilutions recommandées:</b> WB 1:1000-1:6000 IHC 1:50-1:500
<b>Isotype:</b> IgG1	<b>MW calculé:</b> 108 kDa	
	<b>MW observés:</b> 108 kDa	

## Applications

<b>Applications testées:</b> IHC, WB, ELISA	<b>Contrôles positifs:</b> WB : cellules HeLa, cellules COLO 320, cellules HepG2
<b>Demandes citées:</b> WB	<b>IHC :</b> tissu de cancer du sein humain, tissu de cancer de l'estomac humain, tissu de cancer du foie humain
<b>Spécificité de l'espèce:</b> Humain	
<b>Espèces citées:</b> Humain	

**Remarque-IHC: il est suggéré de démasquer l'antigène avec un tampon de TE buffer pH 9,0; (\*) À défaut, le démasquage de l'antigène peut être effectué avec un tampon citrate pH 6,0.**

## Informations générales

EPHA1, also named as EPH, EPHT and EPHT1, belongs to ephrin receptor subfamily of the protein-tyrosine kinase family. EPH and EPH-related receptors have been implicated in mediating developmental events, particularly in the nervous system. Receptors in the EPH subfamily typically have a single kinase domain and an extracellular region containing a Cys-rich domain and 2 fibronectin type III repeats. Ligands in the ephrin-A subclass, including the prototype family member ephrin-A1 (B61), are membrane associated through glycosylphosphatidylinositol linkages, whereas ephrin-B subclass consists of ligands with transmembrane domains. The general role of the Eph family is in mediating repulsive cell-cell interaction.

## Publications notables

Autrice	Pubmed ID	Journal	Application
Renjie Wang	37389689	Metab Brain Dis	WB

## Stockage

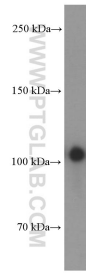
**Stockage:**  
Stocker à -20°C. Stable pendant un an après l'expédition.  
**Tampon de stockage:**  
PBS avec azoture de sodium à 0,02 % et glycérol à 50 % pH 7,3  
L'aliquotage n'est pas nécessaire pour le stockage à -20C

\*\*\* Les 20ul contiennent 0,1% de BSA.

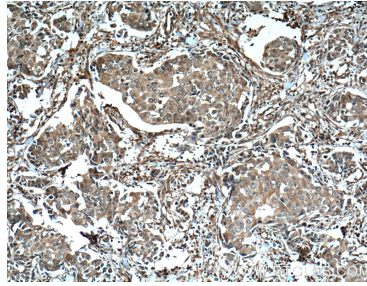
For technical support and original validation data for this product please contact:  
T: 1 (888) 4PTGLAB (1-888-478-4522) (toll free in USA), or 1(312) 455-8498 (outside USA)  
E: proteintech@ptglab.com  
W: ptglab.com

This product is exclusively available under Proteintech Group brand and is not available to purchase from any other manufacturer.

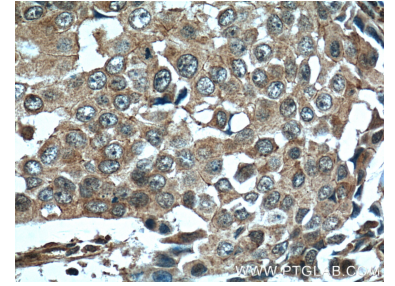
## Données de validation sélectionnées



HeLa cells were subjected to SDS PAGE followed by western blot with 60155-2-Ig (EPA1-specific antibody at dilution of 1:3000 incubated at room temperature for 1.5 hours.



Immunohistochemical analysis of paraffin-embedded human breast cancer tissue slide using 60155-2-Ig (EPA1-specific antibody at dilution of 1:200 (under 10x lens). Heat mediated antigen retrieval with Tris-EDTA buffer (pH 9.0).



Immunohistochemical analysis of paraffin-embedded human breast cancer tissue slide using 60155-2-Ig (EPA1-specific antibody at dilution of 1:200 (under 40x lens). Heat mediated antigen retrieval with Tris-EDTA buffer (pH 9.0).