

À des fins de recherche uniquement

# Anticorps Monoclonal anti-MSH2

Numéro de catalogue: 60161-1-Ig

Phare

1 Publications



## Informations de base

Numéro de catalogue: 60161-1-Ig	Numéro d'acquisition GenBank: BC021566	Méthode de purification: Purification par protéine A
Taille: 150ul , Concentration: 1000 µg/ml by Nanodrop and 1000 µg/ml by Bradford method using BSA as the standard;	Identification du gène (NCBI): 4436	CloneNo.: 2H5F5
Hôte: Mouse	Nom complet: mutS homolog 2, colon cancer, nonpolyposis type 1 (E. coli)	Dilutions recommandées: WB 1:5000-1:50000 IHC 1:20-1:200
Isotype: IgG1	MW calculé: 105 kDa	
Immunogen Catalog Number: AG7835	MW observés: 105 kDa	

## Applications

### Applications testées:

IHC, WB, ELISA

### Demandes citées:

IHC

### Spécificité de l'espèce:

Humain

### Espèces citées:

souris

**Remarque-IHC: il est suggéré de démasquer l'antigène avec un tampon de TE buffer pH 9,0; (\*) A défaut, 'le démasquage de l'antigène peut être 'effectué avec un tampon citrate pH 6,0.**

### Contrôles positifs:

WB : cellules HeLa, cellules COLO 320, cellules HCT 116, cellules HEK-293, cellules HepG2

IHC : tissu de cancer du côlon humain,

## Informations générales

MSH2, named for its homologous to the E.coli MutS gene, takes part in DNA mismatch repair(MMR) to maintain the stability of DNA. MSH2 contains a helix-turn-helix domain, which responds for binding to DNA. Also, MSH2 has a direct role in mutation avoidance and micro-satellite stability in cell.

## Publications notables

Autrice	Pubmed ID	Journal	Application
Qijing Wu	34933913	Cancer Immunol Res	IHC

## Stockage

### Stockage:

Stocker à -20°C. Stable pendant un an après l'expédition.

### Tampon de stockage:

PBS avec azoture de sodium à 0,02 % et glycérol à 50 % pH 7,3

L'aliquotage n'est pas nécessaire pour le stockage à -20C

\*\*\* Les 20ul contiennent 0,1% de BSA.

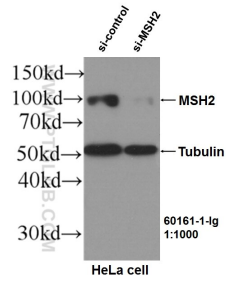
For technical support and original validation data for this product please contact:

T: 1 (888) 4PTGLAB (1-888-478-4522) (toll free in USA), or 1(312) 455-8498 (outside USA)

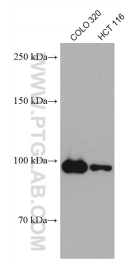
E: proteintech@ptglab.com  
W: ptglab.com

This product is exclusively available under Proteintech Group brand and is not available to purchase from any other manufacturer.

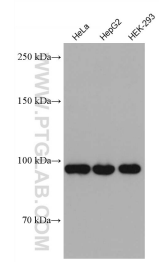
## Données de validation sélectionnées



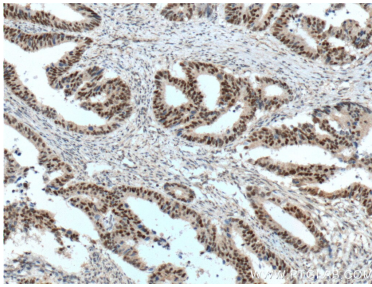
WB results of MSH2 (60161-1-Ig, 1:1000) antibody with si-Control and si-MSH2 transfected HeLa cells..



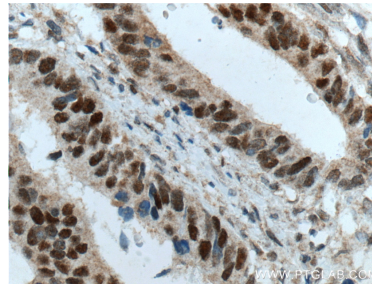
Various lysates were subjected to SDS PAGE followed by western blot with 60161-1-Ig (MSH2 antibody) at dilution of 1:10000 incubated at room temperature for 1.5 hours.



Various lysates were subjected to SDS PAGE followed by western blot with 60161-1-Ig (MSH2 antibody) at dilution of 1:10000 incubated at room temperature for 1.5 hours.



Immunohistochemical analysis of paraffin-embedded human colon cancer tissue slide using 60161-1-Ig (MSH2 Antibody) at dilution of 1:800 (under 10x lens). Heat mediated antigen retrieval with Tris-EDTA buffer (pH 9.0).



Immunohistochemical analysis of paraffin-embedded human colon cancer tissue slide using 60161-1-Ig (MSH2 Antibody) at dilution of 1:800 (under 40x lens). Heat mediated antigen retrieval with Tris-EDTA buffer (pH 9.0).