

À des fins de recherche uniquement

Anticorps Monoclonal anti-TEM1

Numéro de catalogue: 60170-1-Ig **5 Publications**



Informations de base

Numéro de catalogue: 60170-1-Ig	Numéro d'acquisition GenBank: BC051340	Méthode de purification: Purification par protéine A
Taille: 150ul , Concentration: 1600 µg/ml by Nanodrop and 1000 µg/ml by Bradford method using BSA as the standard;	Identification du gène (NCBI): 57124	CloneNo.: 1F9B4
Hôte: Mouse	Nom complet: CD248 molecule, endosialin	Dilutions recommandées: WB 1:1000-1:4000 IHC 1:50-1:500
Isotype: IgG1	MW calculé: 757 aa, 81 kDa	
Immunogen Catalog Number: AG13334	MW observés: 150-160 kDa	

Applications

Applications testées:

IHC, WB, ELISA

Demandes citées:

IF, IHC, IP, WB

Spécificité de l'espèce:

Humain

Espèces citées:

Humain

Remarque-IHC: il est suggéré de démasquer l'antigène avec un tampon de TE buffer pH 9,0; (*) A défaut, 'le démasquage de l'antigène peut être effectué avec un tampon citrate pH 6,0.

Contrôles positifs:

WB : cellules HUVEC, cellules COLO 320

IHC : tissu de cancer du sein humain, tissu de carcinome à cellules rénales humain

Informations générales

TEM1 (Tumor endothelial marker 1), also named as CD248, Endosialin and CD164L1, is a C-type lectin-like domain (CTLD) containing type I transmembrane glycoprotein. It is now considered to be a highly selective marker for activated perivascular and stromal cells, detected in most cancers and at least some inflammatory disorders. CD248 plays a role in tumor angiogenesis. It is a potential diagnostic tool and therapeutic target of inflammatory and malignant disease. Two isoforms of human TEM1 exist. The calculated molecular weights of the two isoforms are 81 kDa and 46 kDa, respectively. Native TEM1 can be glycosylated, and the glycosylated form has a larger apparent molecular weight than 81 kDa.

Publications notables

Autrice	Pubmed ID	Journal	Application
Shengya Cao	34531301	Proc Natl Acad Sci U S A	WB
Chia-Lun Hong	35950912	Cancer Res	WB,IF,IP
Po-Sheng Chen	35732643	Sci Rep	WB,IHC,IF,IP

Stockage

Stockage:

Stocker à -20°C. Stable pendant un an après l'expédition.

Tampon de stockage:

PBS avec azoture de sodium à 0,02 % et glycérol à 50 % pH 7,3

L'aliquotage n'est pas nécessaire pour le stockage à -20C

*** Les 20ul contiennent 0,1% de BSA.

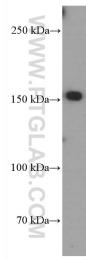
For technical support and original validation data for this product please contact:

T: 1 (888) 4PTGLAB (1-888-478-4522) (toll free in USA), or 1(312) 455-8498 (outside USA)

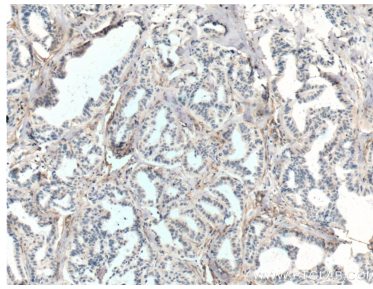
E: proteintech@ptglab.com
W: ptglab.com

This product is exclusively available under Proteintech Group brand and is not available to purchase from any other manufacturer.

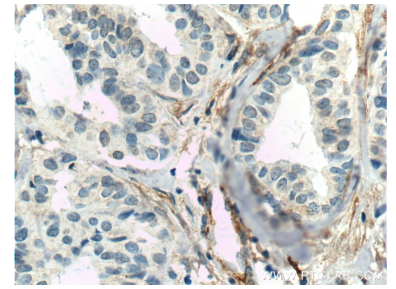
Données de validation sélectionnées



HUVEC cells were subjected to SDS PAGE followed by western blot with 60170-1-Ig (TEM1 antibody at dilution of 1:2000 incubated at room temperature for 1.5 hours.



Immunohistochemical analysis of paraffin-embedded human breast cancer tissue slide using 60170-1-Ig (TEM1 antibody at dilution of 1:250 (under 10x lens). Heat mediated antigen retrieval with Tris-EDTA buffer (pH 9.0).



Immunohistochemical analysis of paraffin-embedded human breast cancer tissue slide using 60170-1-Ig (TEM1 antibody at dilution of 1:250 (under 40x lens). Heat mediated antigen retrieval with Tris-EDTA buffer (pH 9.0).