

À des fins de recherche uniquement

Anticorps Monoclonal anti-ALDH1A1



Numéro de catalogue: 60171-1-Ig

Phare

8 Publications

Informations de base

Numéro de catalogue: 60171-1-Ig	Numéro d'acquisition GenBank: BC001505	Méthode de purification: Purification par protéine A
Taille: 150ul , Concentration: 1000 µg/ml by Nanodrop;	Identification du gène (NCBI): 216	CloneNo.: 1A10A2
Hôte: Mouse	Nom complet: aldehyde dehydrogenase 1 family, member A1	Dilutions recommandées: WB 1:5000-1:50000 IHC 1:50-1:500 IF 1:400-1:1600
Isotype: IgG1	MW calculé: 501 aa, 55 kDa	
Immunogen Catalog Number: AG8551	MW observés: 52 kDa	

Applications

Applications testées:
FC, IF, IHC, WB, ELISA

Demandes citées:
FC, IF, IHC, IP, WB

Spécificité de l'espèce:
Humain, porc, rat, souris

Espèces citées:
Humain, souris

Contrôles positifs:

WB : cellules A549, cellules HepG2, cellules HuH-7, cellules K-562, cellules MCF-7, tissu hépatique de porc, tissu hépatique de rat

IHC : tissu cérébral humain,

IF : cellules HeLa, cellules A431, tissu de côlon de souris

Remarque-IHC: il est suggéré de démasquer l'antigène avec un tampon de TE buffer pH 9,0; (*) À défaut, le démasquage de l'antigène peut être effectué avec un tampon citrate pH 6,0.

Informations générales

ALDH1A1 (Aldehyde dehydrogenase family 1 member A1), also named as ALDC, ALDH1 and PUMB1, belongs to the aldehyde dehydrogenase family. The ALDH1A1 gene encodes a liver cytosolic isoform of acetaldehyde dehydrogenase, an enzyme involved in the major pathway of alcohol metabolism after alcohol dehydrogenase. ALDH1A1 plays a critical role in protection against oxidative stress-induced cytotoxicity in lens epithelial cells (PMID:19296407). And it is important for multiple biological activities including drug resistance, cell differentiation, and oxidative stress response (PMID:19025616). As a novel cancer stem cell marker, ALDH1A1 can be used for tumors whose corresponding normal tissues express ALDH1A1 in relatively restricted or limited levels such as breast, lung, ovarian or colon cancer (PMID: 20422001).

Publications notables

Autrice	Pubmed ID	Journal	Application
Ting Tang	33173989	Mol Med Rep	WB
Haihua Wang	36484016	J Cancer	WB, IHC
Rui-Qi Wang	31139022	Cancer Cell Int	WB

Stockage

Stockage:

Stocker à -20°C. Stable pendant un an après l'expédition.

Tampon de stockage:

PBS avec azoture de sodium à 0,02 % et glycérol à 50 % pH 7,3

L'aliquotage n'est pas nécessaire pour le stockage à -20C

*** Les 20ul contiennent 0,1% de BSA.

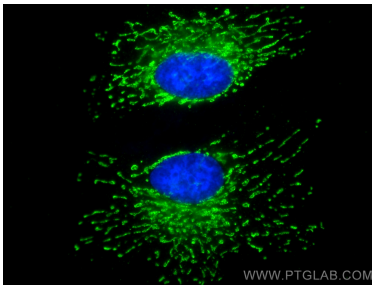
For technical support and original validation data for this product please contact:

T: 1 (888) 4PTGLAB (1-888-478-4522) (toll free in USA), or 1(312) 455-8498 (outside USA)

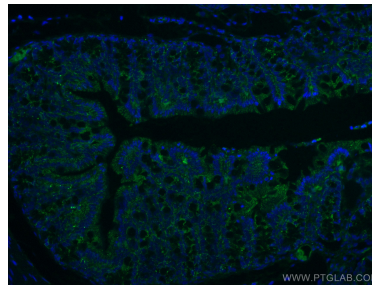
E: proteintech@ptglab.com
W: ptglab.com

This product is exclusively available under Proteintech Group brand and is not available to purchase from any other manufacturer.

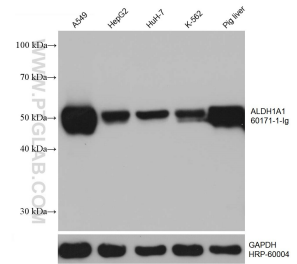
Données de validation sélectionnées



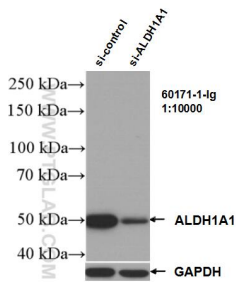
Immunofluorescent analysis of (4% PFA) fixed HeLa cells using ALDH1A1 antibody (60171-1-Ig, Clone: 1A10A2) at dilution of 1:800 and CoraLite®488-Conjugated AffiniPure Goat Anti-Mouse IgG(H+L).



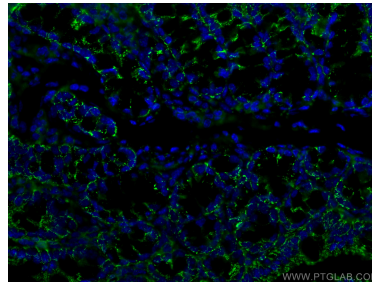
Immunofluorescent analysis of (4% PFA) fixed mouse colon tissue using 60171-1-Ig (ALDH1A1 antibody), at dilution of 1:100 and CoraLite®488-Conjugated AffiniPure Goat Anti-Mouse IgG(H+L).



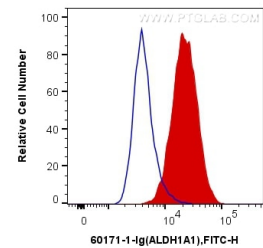
Various lysates were subjected to SDS PAGE followed by western blot with 60171-1-Ig (ALDH1A1 antibody) at dilution of 1:20000 incubated at room temperature for 1.5 hours. The membrane was stripped and reblotted with HRP-conjugated GAPDH Monoclonal antibody (HRP-60004) as loading control.



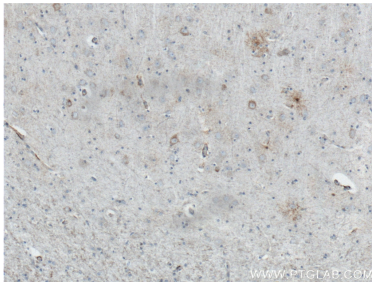
WB result of ALDH1A1 antibody (60171-1-Ig; 1:10000; incubated at room temperature for 1.5 hours) with sh-Control and sh-ALDH1A1 transfected K-562 cells.



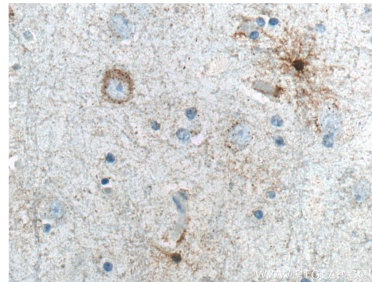
Immunofluorescent analysis of (4% PFA) fixed mouse colon tissue using 60171-1-Ig (ALDH1A1 antibody), at dilution of 1:100 and CoraLite®488-Conjugated AffiniPure Goat Anti-Mouse IgG(H+L).



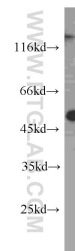
1×10^6 HepG2 cells were intracellularly stained with 0.2 ug Anti-Human ALDH1A1 (60171-1-Ig, Clone:1A10A2) and CoraLite®488-Conjugated AffiniPure Goat Anti-Mouse IgG(H+L) at dilution 1:1000 (red), or 0.2 ug Control Antibody. Cells were fixed with 4% PFA and permeabilized with Flow Cytometry Perm Buffer (PF00011-C).



Immunohistochemical analysis of paraffin-embedded human brain tissue slide using 60171-1-Ig (ALDH1A1 Antibody) at dilution of 1:200 (under 10x lens). Heat mediated antigen retrieved with Sodium Citrate buffer (pH 6.0).



Immunohistochemical analysis of paraffin-embedded human brain tissue slide using 60171-1-Ig (ALDH1A1 Antibody) at dilution of 1:200 (under 40x lens). Heat mediated antigen retrieved with Sodium Citrate buffer (pH 6.0).



MCF7 cells were subjected to SDS PAGE followed by western blot with 60171-1-Ig (ALDH1A1 antibody) at dilution of 1:500 incubated at room temperature for 1.5 hours.