

À des fins de recherche uniquement

Anticorps Monoclonal anti-CKM-Specific



Numéro de catalogue: 60177-1-Ig

Informations de base

Numéro de catalogue: 60177-1-Ig	Numéro d'acquisition GenBank: BC007462	Méthode de purification: Purification par protéine A
Taille: 150ul , Concentration: 3500 µg/ml by Nanodrop and 2027 µg/ml by Bradford method using BSA as the standard;	Identification du gène (NCBI): 1158	CloneNo.: 2G3F6
Hôte: Mouse	Nom complet: creatine kinase, muscle	Dilutions recommandées: WB 1:500-1:1000 IHC 1:20-1:200 IF 1:50-1:400
Isotype: IgG2a	MW calculé: 43 kDa	
	MW observés: 43 kDa, 90 kDa, 130 kDa	

Applications

Applications testées:

IF, IHC, WB, ELISA

Spécificité de l'espèce:

Humain, rat, souris

Remarque-IHC: il est suggéré de démasquer l'antigène avec un tampon de TE buffer pH 9,0; (*) À défaut, 'le démasquage de l'antigène peut être effectué avec un tampon citrate pH 6,0.

Contrôles positifs:

WB : Tissu de muscle squelettique humain, tissu de muscle squelettique humain

IHC : tissu cardiaque humain, tissu cardiaque de souris, tissu cérébral de rat, tissu hépatique humain, tissu testiculaire de rat, tissu testiculaire de souris

IF : cellules HepG2, cellules C2C12, tissu cardiaque de souris

Informations générales

CKM, also named as CKMM and M-CK, is a member of the ATP:guanido phosphotransferase protein family. It is a cytoplasmic enzyme involved in energy homeostasis and is an important serum marker for myocardial infarction. CKM reversibly catalyzes the transfer of phosphate between ATP and various phosphogens such as creatine phosphate. It acts as a homodimer in striated muscle as well as in other tissues, and as a heterodimer with a similar brain isozyme in heart. CK isoenzymes play a central role in energy transduction in tissues with large, fluctuating energy demands, such as skeletal muscle, heart, brain and spermatozoa. CK MB consists of a dimer of nonidentical chains. With MM being the major form in skeletal muscle and myocardium, MB existing in myocardium, and BB existing in many tissues, especially brain.

Stockage

Stockage:

Stocker à -20°C. Stable pendant un an après l'expédition.

Tampon de stockage:

PBS avec azoture de sodium à 0,02 % et glycérol à 50 % pH 7,3

L'aliquotage n'est pas nécessaire pour le stockage à -20C

*** Les 20ul contiennent 0,1% de BSA.

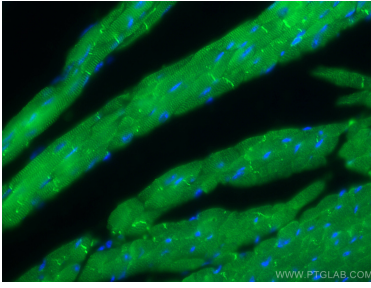
For technical support and original validation data for this product please contact:

T: 1 (888) 4PTGLAB (1-888-478-4522) (toll free in USA), or 1(312) 455-8498 (outside USA)

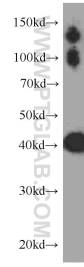
E: proteintech@ptglab.com
W: ptglab.com

This product is exclusively available under Proteintech Group brand and is not available to purchase from any other manufacturer.

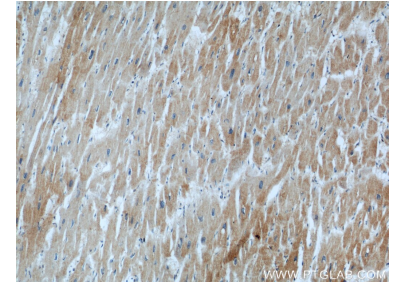
Données de validation sélectionnées



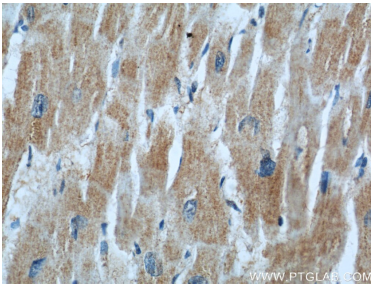
Immunofluorescent analysis of (4% PFA) fixed mouse heart tissue using CKM-Specific antibody (60177-1-Ig, Clone: 2G3F6) at dilution of 1:400 and CoraLite®488-Conjugated AffiniPure Goat Anti-Mouse IgG(H+L).



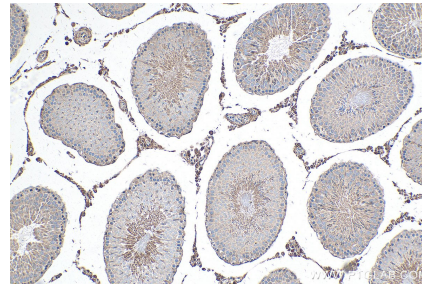
human skeletal muscle tissue were subjected to SDS PAGE followed by western blot with 60177-1-Ig (CKM-Specific antibody) at dilution of 1:500 incubated at room temperature for 1.5 hours.



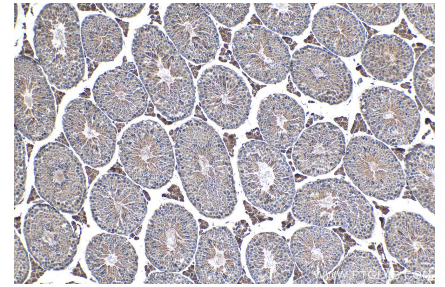
Immunohistochemical analysis of paraffin-embedded human heart slide using 60177-1-Ig (CKM-Specific Antibody) at dilution of 1:50.



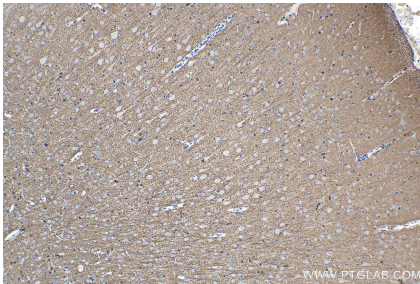
Immunohistochemical analysis of paraffin-embedded human heart slide using 60177-1-Ig (CKM-Specific Antibody) at dilution of 1:50.



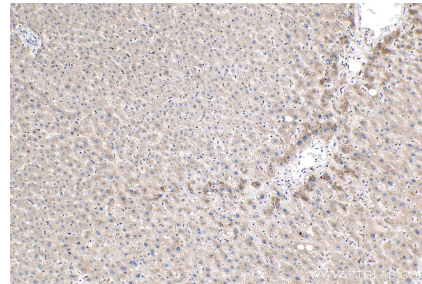
Immunohistochemical analysis of paraffin-embedded rat testis tissue slide using 60177-1-Ig (CKM-Specific antibody) at dilution of 1:1000 (under 10x lens). Heat mediated antigen retrieval with Tris-EDTA buffer (pH 9.0).



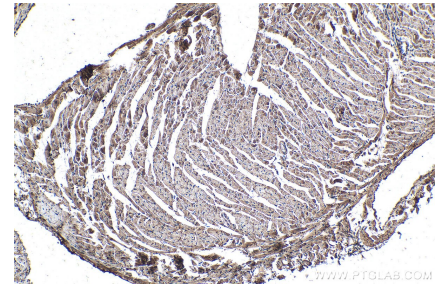
Immunohistochemical analysis of paraffin-embedded mouse testis tissue slide using 60177-1-Ig (CKM-Specific antibody) at dilution of 1:1000 (under 10x lens). Heat mediated antigen retrieval with Tris-EDTA buffer (pH 9.0).



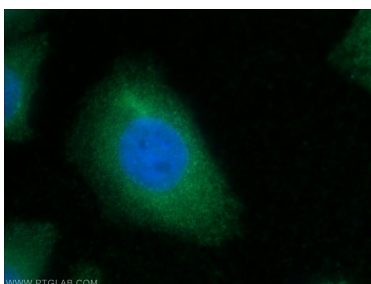
Immunohistochemical analysis of paraffin-embedded rat brain tissue slide using 60177-1-Ig (CKM-Specific antibody) at dilution of 1:1000 (under 10x lens). Heat mediated antigen retrieval with Tris-EDTA buffer (pH 9.0).



Immunohistochemical analysis of paraffin-embedded human liver tissue slide using 60177-1-Ig (CKM-Specific antibody) at dilution of 1:2000 (under 10x lens). Heat mediated antigen retrieval with Tris-EDTA buffer (pH 9.0).



Immunohistochemical analysis of paraffin-embedded mouse heart tissue slide using 60177-1-Ig (CKM-Specific antibody) at dilution of 1:1000 (under 10x lens). Heat mediated antigen retrieval with Tris-EDTA buffer (pH 9.0).



WWW.PTGLAB.COM

Immunofluorescent analysis of HepG2 cells using 60177-1-Ig (CKM-Specific antibody) at dilution of 1:50 and Alexa Fluor 488-conjugated AffiniPure Goat Anti-Mouse IgG (H+L).