

À des fins de recherche uniquement

Anticorps Monoclonal anti-BCL2

Numéro de catalogue: 60178-1-Ig

Phare

248 Publications



Informations de base

Numéro de catalogue:
60178-1-Ig

Taille:
150ul, Concentration: 2157 µg/ml by 596
Nanodrop and 1000 µg/ml by Bradford
method using BSA as the standard;

Hôte:
Mouse

Isotype:
IgG2b

Immunogen Catalog Number:
AG3508

Numéro d'acquisition GenBank:
BC027258

Identification du gène (NCBI):

Nom complet:
B-cell CLL/lymphoma 2

MW calculé
26 kDa

MW observés:
26 kDa

Méthode de purification:
Purification par protéine A

CloneNo.:
4H8C6

Dilutions recommandées:
IP 0.5-4.0 ug for IP and 1:500-1:2000
for WB
IHC 1:6400-1:25600
IF 1:200-1:800

Applications

Applications testées:
FC, IF, IHC, IP, ELISA

Demandes citées:
CoIP, ICC, IF, IHC, IP, WB

Spécificité de l'espèce:
Humain, porc

Espèces citées:
Humain, porc, singe

Remarque-IHC: il est suggéré de démasquer l'antigène avec un tampon de TE buffer pH 9,0; (*) A défaut, 'le démasquage de l'antigène peut être effectué avec un tampon citrate pH 6,0.

Contrôles positifs:

IP: cellules U-937,

IHC: tissu d'appendice humain, cellules Jurkat, tissu d'amygdales humaine, tissu de lymphome humain

IF: cellules MCF-7, tissu d'amygdales humaine, tissu d'appendice humaine

Informations générales

BCL2 belongs to the Bcl-2 family. It suppresses apoptosis in a variety of cell systems including factor-dependent lymphohematopoietic and neural cells. BCL2 regulates cell death by controlling the mitochondrial membrane permeability. It appears to function in a feedback loop system with caspases. BCL2 inhibits caspase activity either by preventing the release of cytochrome c from the mitochondria and/or by binding to the apoptosis-activating factor (APAF-1).

Publications notables

Autrice	Pubmed ID	Journal	Application
Ji Xing	36230734	Cancers (Basel)	IF
Fei Yu	36175965	Chin Med	WB
Jinliang Liu	34630847	Oxid Med Cell Longev	WB

Stockage

Stockage:

Stocker à -20°C. Stable pendant un an après l'expédition.

Tampon de stockage:

PBS avec azoture de sodium à 0,02 % et glycérol à 50 % pH 7,3

L'aliquotage n'est pas nécessaire pour le stockage à -20C

*** Les 20ul contiennent 0,1% de BSA.

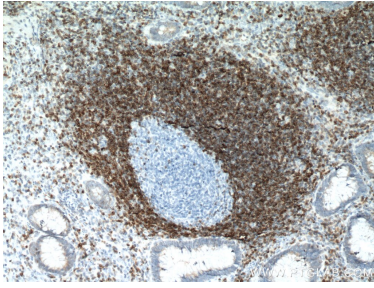
For technical support and original validation data for this product please contact:

T: 1 (888) 4PTGLAB (1-888-478-4522) (toll free
in USA), or 1(312) 455-8498 (outside USA)

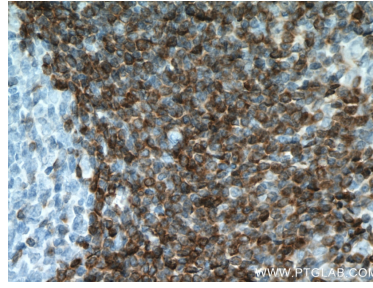
E: proteintech@ptglab.com
W: ptglab.com

This product is exclusively available under Proteintech Group brand and is not available to purchase from any other manufacturer.

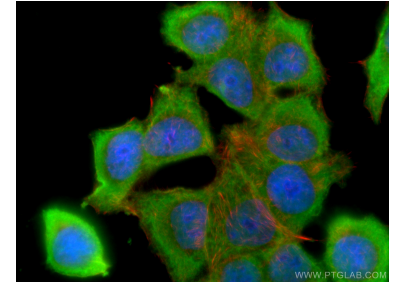
Données de validation sélectionnées



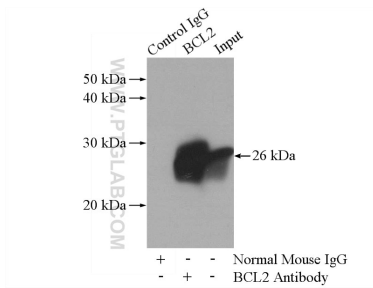
Immunohistochemical analysis of paraffin-embedded human appendicitis tissue slide using 60178-1-Ig (BCL2 antibody) at dilution of 1:12800 (under 10x lens. Heat mediated antigen retrieval with Tris-EDTA buffer (pH 9.0).



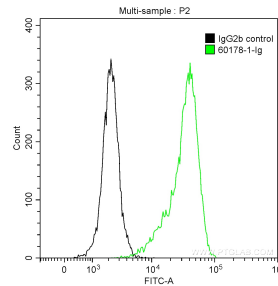
Immunohistochemical analysis of paraffin-embedded human appendicitis tissue slide using 60178-1-Ig (BCL2 antibody) at dilution of 1:12800 (under 40x lens. Heat mediated antigen retrieval with Tris-EDTA buffer (pH 9.0).



Immunofluorescent analysis of (-20°C Ethanol) fixed MCF-7 cells using BCL2 antibody (60178-1-Ig, Clone: 4H8C6) at dilution of 1:400 and CoraLite@488-Conjugated AffiniPure Goat Anti-Mouse Ig(H+L).



IP Result of anti-BCL2 (IP:60178-1-Ig, 5ug; Detection:60178-1-Ig 1:1000) with U-937 cells lysate 4000ug.



1X10⁶ human peripheral blood lymphocytes were stained with 0.2 ug Anti-Human BCL2 (60178-1-Ig, Clone:4H8C6) and CoraLite@488-Conjugated AffiniPure Goat Anti-Mouse IgG(H+L) at dilution 1:1000 (green), or 0.2 ug isotype control and CoraLite@488-Conjugated AffiniPure Goat Anti-Mouse IgG(H+L) at dilution 1:1000 (black). Cells were fixed with 4% PFA and permeabilized with 0.1% Triton X-100.