

À des fins de recherche uniquement

Anticorps Monoclonal anti-Cytokeratin 20



Numéro de catalogue: 60183-1-Ig **3 Publications**

Informations de base

Numéro de catalogue: 60183-1-Ig	Numéro d'acquisition GenBank: BC031559	Méthode de purification: Purification par protéine A
Taille: 150ul , Concentration: 1200 µg/ml by Nanodrop and 1000 µg/ml by Bradford method using BSA as the standard;	Identification du gène (NCBI): 54474	CloneNo.: 4D10A4
Hôte: Mouse	Nom complet: keratin 20	Dilutions recommandées: WB 1:500-1:2000 IHC 1:1000-1:51200 IF 1:400-1:1600
Isotype: IgG2b	MW calculé: 424 aa, 48 kDa	
Immunogen Catalog Number: AG11336	MW observés: 46 kDa	

Applications

Applications testées:

IF, IHC, WB, ELISA

Demandes citées:

IF

Spécificité de l'espèce:

Humain

Espèces citées:

Humain

Remarque-IHC: il est suggéré de démasquer l'antigène avec un tampon de TE buffer pH 9,0; (*) A défaut, 'le démasquage de l'antigène peut être effectué avec un tampon citrate pH 6,0.

Contrôles positifs:

WB : cellules Colo320, cellules COLO 320

IHC : tissu de côlon humain, tissu d'appendicite humaine, tissu de carcinome urothélial humain, tissu d'estomac humain

IF : cellules HT-29, tissu de côlon humain

Informations générales

Keratins are a large family of proteins that form the intermediate filament cytoskeleton of epithelial cells. Keratin expression is highly regulated, tissue specific, and varies according to cell-state. Type I keratins consist of acidic, low molecular weight proteins with MW ranging from 40 kDa (KRT19) to 64 kDa (KRT9). Type 2 keratins consist of basic or neutral, high molecular weight proteins with MW from 52 kDa (KRT8) to 67 kDa (KRT18). Keratin 20 is a type I cytokeratin. It is a major cellular protein of mature enterocytes and goblet cells and is specifically found in the gastric and intestinal mucosa.

Publications notables

Autrice	Pubmed ID	Journal	Application
Yoshiya Asano	29032203	Biochem Biophys Res Commun	IF
Yuli Wang	29693040	Cell Mol Gastroenterol Hepatol	IF
Lijun Hu	34093546	Front Immunol	IF

Stockage

Stockage:

Stocker à -20°C. Stable pendant un an après l'expédition.

Tampon de stockage:

PBS avec azoture de sodium à 0,02 % et glycérol à 50 % pH 7,3

L'aliquotage n'est pas nécessaire pour le stockage à -20C

*** Les 20ul contiennent 0,1% de BSA.

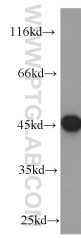
For technical support and original validation data for this product please contact:

T: 1 (888) 4PTGLAB (1-888-478-4522) (toll free in USA), or 1(312) 455-8498 (outside USA)

E: proteintech@ptglab.com
W: ptglab.com

This product is exclusively available under Proteintech Group brand and is not available to purchase from any other manufacturer.

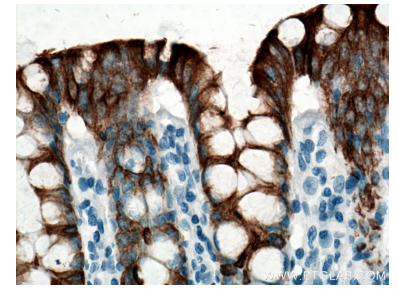
Données de validation sélectionnées



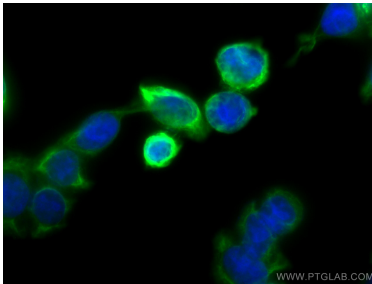
COLO 320 cells were subjected to SDS PAGE followed by western blot with 60183-1-Ig (Cytokeratin 20 antibody) at dilution of 1:1000 incubated at room temperature for 1.5 hours.



Immunohistochemical analysis of paraffin-embedded human colon tissue slide using 60183-1-Ig (Cytokeratin 20 antibody) at dilution of 1:51200 (under 10x lens. Heat mediated antigen retrieval with Tris-EDTA buffer (pH 9.0).



Immunohistochemical analysis of paraffin-embedded human colon tissue slide using 60183-1-Ig (Cytokeratin 20 antibody) at dilution of 1:51200 (under 40x lens. Heat mediated antigen retrieval with Tris-EDTA buffer (pH 9.0).



Immunofluorescent analysis of (-20°C Ethanol) fixed HT-29 cells using Cytokeratin 20 antibody (60183-1-Ig, Clone: 4D10A4) at dilution of 1:800 and CoraLite®488-Conjugated AffiniPure Goat Anti-Mouse IgG(H+L).