

À des fins de recherche uniquement

# Anticorps Monoclonal anti- CD138/Syndecan-1



Numéro de catalogue: 60185-1-Ig

## Informations de base

Numéro de catalogue: 60185-1-Ig	Numéro d'acquisition GenBank: BC008765	Méthode de purification: Purification par protéine G
Taille: 150ul , Concentration: 500 µg/ml by Bradford method using BSA as the standard;	Identification du gène (NCBI): 6382	CloneNo.: 1B6A2
Hôte: Mouse	Nom complet: syndecan 1	Dilutions recommandées: WB 1:200-1:1000
Isotype: IgG1	MW calculé 32.5 kDa	
Immunogen Catalog Number: AG0823	MW observés: 120 kDa	

## Applications

Applications testées: WB, ELISA	Contrôles positifs: WB : cellules BxPC-3,
Spécificité de l'espèce: Humain	

## Informations générales

Syndecan-1 (SDC1), also named CD138, is an integral membrane protein. It participates in cell proliferation, cell migration and cell-matrix interactions via its receptor for extracellular matrix proteins. It is a heparan sulfate proteoglycan expressed on the surface of, and actively shed by, myeloma cells. Altered syndecan-1 expression has been detected in several different tumor types. SDC1 was regarded as a useful marker for labeling normal and neoplastic plasma cells and plasmacytoid lymphomas.

## Stockage

Stockage:  
Stocker à -20°C. Stable pendant un an après l'expédition.  
Tampon de stockage:  
PBS avec azoture de sodium à 0,02 % et glycérol à 50 % pH 7,3  
L'aliquotage n'est pas nécessaire pour le stockage à -20C

\*\*\* Les 20ul contiennent 0,1% de BSA.

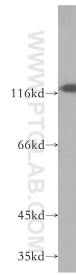
For technical support and original validation data for this product please contact:

T: 1 (888) 4PTGLAB (1-888-478-4522) (toll free  
in USA), or 1(312) 455-8498 (outside USA)

E: [proteintech@ptglab.com](mailto:proteintech@ptglab.com)  
W: [ptglab.com](http://ptglab.com)

This product is exclusively available under Proteintech Group brand and is not available to purchase from any other manufacturer.

## Données de validation sélectionnées



BxPC-3 cells were subjected to SDS PAGE followed by western blot with 60185-1-Ig (CD138/Syndecan-1 antibody) at dilution of 1:400 incubated at room temperature for 1.5 hours.