

À des fins de recherche uniquement

Anticorps Monoclonal anti-Cyclin D1



Numéro de catalogue: 60186-1-Ig

Phare

602 Publications

Informations de base

Numéro de catalogue: 60186-1-Ig	Numéro d'acquisition GenBank: BC000076	Méthode de purification: Purification par protéine A
Taille: 150ul , Concentration: 2000 µg/ml by Nanodrop;	Identification du gène (NCBI): 595	CloneNo.: 2G3G5
Hôte: Mouse	Nom complet: cyclin D1	Dilutions recommandées: WB 1:5000-1:50000
Isotype: IgG2b	MW calculé: 295 aa, 34 kDa	
Immunogen Catalog Number: AG0689	MW observés: 34 kDa	

Applications

Applications testées:

FC, WB, ELISA

Demandes citées:

IF, IP, WB

Spécificité de l'espèce:

Humain, rat, souris

Espèces citées:

bovin, Chèvre, Humain, poisson-zèbre, souris, Hamster

Contrôles positifs:

WB : cellules HCT 116, cellules A431, cellules A549, cellules HeLa, cellules HepG2, cellules HSC-T6, cellules MCF-7, cellules NIH/3T3, cellules PC-12, cellules RAW 264.7, cellules SH-SY5Y, cellules SW-1990

Informations générales

CCND1 (cyclin D1), also known as PRAD1 or BCL1, belongs to the highly conserved cyclin family, whose members are characterized by a dramatic periodicity in protein abundance throughout the cell cycle. CCND1 forms a complex with and functions as a regulatory subunit of CDK4 or CDK6, whose activity is required for cell cycle G1/S transition. The CCND1 gene, located on 11q13 has been reported to be overexpressed in mantle cell lymphoma (MCL) due to the chromosomal translocation. CCND1 has been shown to interact with tumor suppressor protein Rb and the expression of this gene is regulated positively by Rb. Over-expression of CCND1 is known to correlate with the early onset of cancer and risk of tumor progression and metastasis.

Publications notables

Autrice	Pubmed ID	Journal	Application
Ji Xing	36230734	Cancers (Basel)	WB
Yong-Li Zhang	34679694	Antioxidants (Basel)	WB
Wei-Liang Ye	26419507	Sci Rep	WB

Stockage

Stockage:

Stocker à -20°C. Stable pendant un an après l'expédition.

Tampon de stockage:

PBS avec azoture de sodium à 0,02 % et glycérol à 50 % pH 7,3

L'aliquotage n'est pas nécessaire pour le stockage à -20C

*** Les 20ul contiennent 0,1% de BSA.

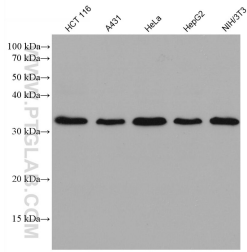
For technical support and original validation data for this product please contact:

T: 1 (888) 4PTGLAB (1-888-478-4522) (toll free in USA), or 1(312) 455-8498 (outside USA)

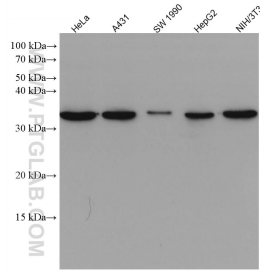
E: proteintech@ptglab.com
W: ptglab.com

This product is exclusively available under Proteintech Group brand and is not available to purchase from any other manufacturer.

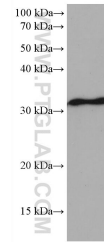
Données de validation sélectionnées



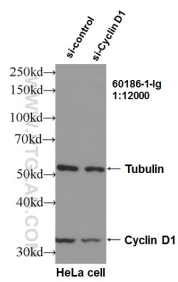
Various lysates were subjected to SDS PAGE followed by western blot with 60186-1-Ig (Cyclin D1 antibody) at dilution of 1:20000 incubated at room temperature for 1.5 hours.



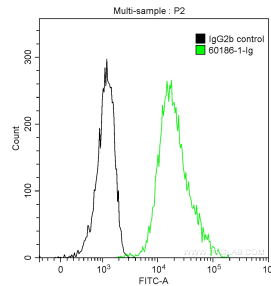
Various lysates were subjected to SDS PAGE followed by western blot with 60186-1-Ig (Cyclin D1 antibody) at dilution of 1:40000 incubated at room temperature for 1.5 hours.



RAW 264.7 cells were subjected to SDS PAGE followed by western blot with 60186-1-Ig (Cyclin D1 antibody) at dilution of 1:20000 incubated at room temperature for 1.5 hours.



WB result of Cyclin D1 antibody (60186-1-Ig, 1:12,000) with si-Control and si-Cyclin D1 transfected HeLa cells.



1×10^6 SH-SY5Y cells were stained with 0.2 ug Anti-Human Cyclin D1 (60186-1-Ig, Clone:2G3G5) and CoraLite®488-Conjugated AffiniPure Goat Anti-Mouse IgG(H+L) at dilution 1:1000 (green), and 0.2 ug Control Antibody. Cells were fixed with 90% MeOH.