

À des fins de recherche uniquement

Anticorps Monoclonal anti-Cytokeratin 19



Numéro de catalogue: 60187-1-Ig

Phare

6 Publications

Informations de base

Numéro de catalogue: 60187-1-Ig	Numéro d'acquisition GenBank: BC002539	Méthode de purification: Purification par protéine A
Taille: 150ul, Concentration: 1000 µg/ml by Nanodrop and 676 µg/ml by Bradford method using BSA as the standard;	Identification du gène (NCBI): 3880	CloneNo.: 3G1E4
Hôte: Mouse	Nom complet: keratin 19	Dilutions recommandées: WB 1:20000-1:100000 IHC 1:1000-1:51200 IF 1:200-1:800
Isotype: IgG2b	MW calculé: 44 kDa	
Immunogen Catalog Number: AG7407	MW observés: 48 kDa	

Applications

Applications testées:
FC, IF, IHC, WB, ELISA

Demandes citées:
IF, IHC, WB

Spécificité de l'espèce:
Humain, porc, rat, souris

Espèces citées:
Humain, souris

Remarque-IHC: il est suggéré de démasquer l'antigène avec un tampon de TE buffer pH 9,0; (*) A défaut, 'le démasquage de l'antigène peut être 'effectué avec un tampon citrate pH 6,0.

Contrôles positifs:

WB : cellules MCF-7, cellules HaCaT, cellules HeLa, cellules PC-3, cellules T-47D, tissu de côlon de porc, tissu de côlon de rat, tissu de côlon de souris

IHC : tissu de côlon humain, tissu de cancer de la thyroïde humaine, tissu de cancer de l'estomac humain, tissu de cancer de l'oesophage humain, tissu de cancer du poumon humain, tissu de cancer du sein humain

IF : tissu de cancer du sein humain,

Informations générales

The keratins are intermediate filament proteins responsible for the structural integrity of epithelial cells. KRT19, one of type I keratins, is specifically expressed in the periderm, the transiently superficial layer that envelops the developing epidermis. Due to its high sensitivity, KRT19 is the most used marker for detection of tumor cells disseminated in lymph nodes, peripheral blood, and bone marrow of breast cancer patients.

Publications notables

Autrice	Pubmed ID	Journal	Application
Qiu-Zhong Pan	25267273	Stem Cells	WB
Haibo Zhang	34671938	Reprod Sci	IHC
Yuan Li	36251580	Liver Int	IF

Stockage

Stockage:

Stocker à -20°C. Stable pendant un an après l'expédition.

Tampon de stockage:

PBS avec azoture de sodium à 0,02 % et glycérol à 50 % pH 7,3

L'aliquotage n'est pas nécessaire pour le stockage à -20C

*** Les 20ul contiennent 0,1% de BSA.

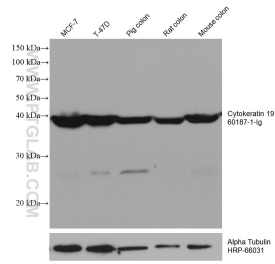
For technical support and original validation data for this product please contact:

T: 1 (888) 4PTGLAB (1-888-478-4522) (toll free in USA), or 1(312) 455-8498 (outside USA)

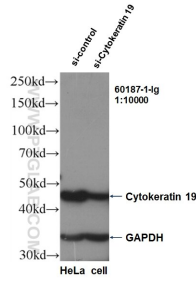
E: proteintech@ptglab.com
W: ptglab.com

This product is exclusively available under Proteintech Group brand and is not available to purchase from any other manufacturer.

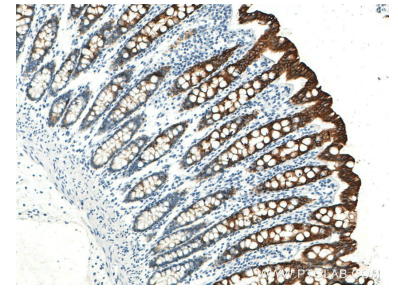
Données de validation sélectionnées



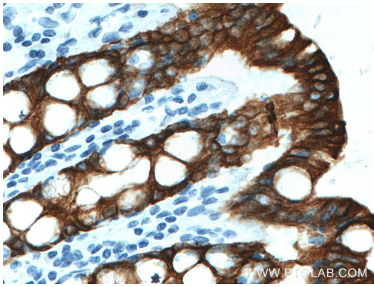
Various lysates were subjected to SDS PAGE followed by western blot with 60187-1-Ig (Cytokeratin 19 antibody) at dilution of 1:50000 incubated at room temperature for 1.5 hours. The membrane was stripped and reblotted with HRP-conjugated Alpha Tubulin Monoclonal antibody (HRP-66031) as loading control.



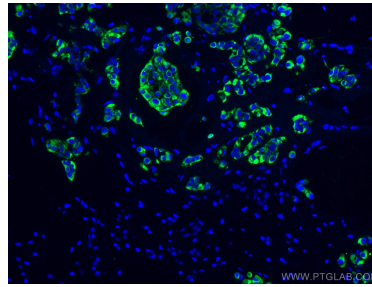
WB result of KRT19 antibody (60187-1-Ig, 1:10,000) with si-Control and si-KRT19 transfected HeLa cells.



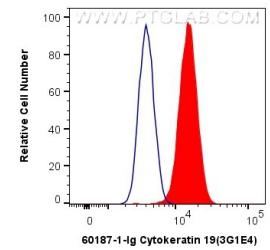
Immunohistochemical analysis of paraffin-embedded human colon tissue slide using 60187-1-Ig (Cytokeratin 19 antibody) at dilution of 1:51200 (under 10x lens. Heat mediated antigen retrieval with Tris-EDTA buffer (pH 9.0).



Immunohistochemical analysis of paraffin-embedded human colon tissue slide using 60187-1-Ig (Cytokeratin 19 antibody) at dilution of 1:51200 (under 40x lens. Heat mediated antigen retrieval with Tris-EDTA buffer (pH 9.0).



Immunofluorescent analysis of (4% PFA) fixed human breast cancer tissue using Cytokeratin 19 antibody (60187-1-Ig, Clone: 3G1E4) at dilution of 1:400 and CoraLite®488-Conjugated AffiniPure Goat Anti-Mouse IgG(H+L).



1X10⁶ HeLa cells were intracellularly stained with 0.4 ug Anti-Human Cytokeratin 19 (60187-1-Ig, Clone:3G1E4) and CoraLite®488-Conjugated AffiniPure Goat Anti-Mouse IgG(H+L) at dilution 1:1000 (red), or 0.4 ug Mouse IgG2b Isotype Control (MPC-11) (65128-1-Ig, Clone: MPC-11) (blue). Cells were fixed with 4% PFA and permeabilized with Flow Cytometry Perm Buffer (PF00011-C).