

À des fins de recherche uniquement

Anticorps Monoclonal anti-NF-L

Numéro de catalogue: 60189-1-Ig



Informations de base

Numéro de catalogue: 60189-1-Ig	Numéro d'acquisition GenBank: BC039237	Méthode de purification: Purification par protéine A
Taille: 150ul, Concentration: 1435 µg/ml by Nanodrop;	Identification du gène (NCBI): 4747	CloneNo.: 5C12G4
Hôte: Mouse	Nom complet: neurofilament, light polypeptide	Dilutions recommandées: WB 1:20000-1:100000 IHC 1:250-1:1000 IF 1:50-1:500
Isotype: IgG1	MW calculé: 543 aa, 62 kDa	
Immunogen Catalog Number: AG15178	MW observés: 65 kDa	

Applications

Applications testées:

FC, IF, IHC, WB, ELISA

Spécificité de l'espèce:

Humain, porc, rat, souris

Remarque-IHC: il est suggéré de démasquer l'antigène avec un tampon de TE buffer pH 9,0; (*) À défaut, 'le démasquage de l'antigène peut être effectué avec un tampon citrate pH 6,0.

Contrôles positifs:

WB : cellules PC-12, tissu cérébral de porc, tissu cérébral de rat, tissu cérébral de souris, tissu cérébral humain

IHC : tissu cérébral de rat, tissu cérébral de souris, tissu cérébral humain

IF : tissu cérébral de souris, tissu cérébral de rat

Informations générales

NEFL, also named as NF68 and NF-L, belongs to the intermediate filament family. Neurofilaments are the 10 nm intermediate filaments found specifically in neurons. They are a major component of the cell's cytoskeleton, and provide support for normal axonal radial growth. Neurofilaments usually contain three intermediate filament proteins: L, M, and H, which are involved in the maintenance of neuronal caliber. The names given to the three major neurofilament subunits are based upon the apparent molecular weight of the mammalian subunits on SDS-PAGE: NF-L, 65-68 kDa; NF-M, 145-160 kDa and NF-H, 200-220 kDa. This antibody is specific to NEFL.

Stockage

Stockage:

Stocker à -20°C. Stable pendant un an après l'expédition.

Tampon de stockage:

PBS avec azoture de sodium à 0,02 % et glycérol à 50 % pH 7,3

L'aliquotage n'est pas nécessaire pour le stockage à -20C

*** Les 20ul contiennent 0,1% de BSA.

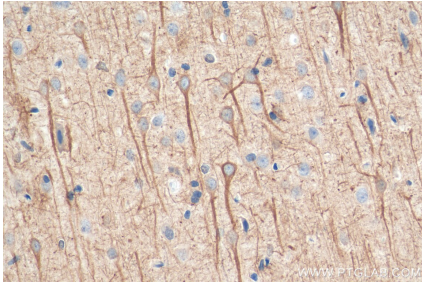
For technical support and original validation data for this product please contact:

T: 1 (888) 4PTGLAB (1-888-478-4522) (toll free in USA), or 1(312) 455-8498 (outside USA)

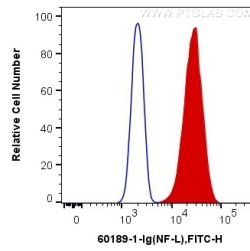
E: proteintech@ptglab.com
W: ptglab.com

This product is exclusively available under Proteintech Group brand and is not available to purchase from any other manufacturer.

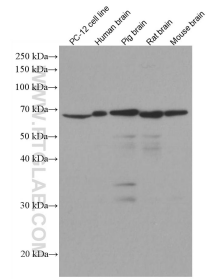
Données de validation sélectionnées



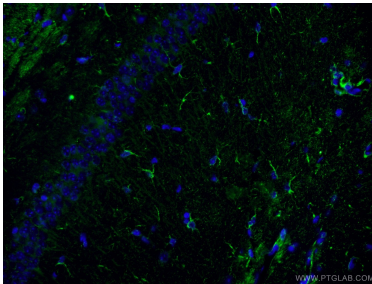
Immunohistochemical analysis of paraffin-embedded rat brain tissue slide using 60189-1-Ig (NF-L antibody) at dilution of 1:500 (under 40x lens). Heat mediated antigen retrieval with Tris-EDTA buffer (pH 9.0).



1X10⁶ PC-12 cells were intracellularly stained with 0.4 ug Anti-Human NF-L (60189-1-Ig, Clone:5C12G4) and Coralite®488-Conjugated AffiniPure Goat Anti-Mouse IgG(H+L) at dilution 1:1000 (red), or 0.4 ug Control Antibody. Cells were fixed with 4% PFA and permeabilized with Flow Cytometry Perm Buffer (PF00011-C).



Various lysates were subjected to SDS PAGE followed by western blot with 60189-1-Ig (NF-L antibody) at dilution of 1:100000 incubated at room temperature for 1.5 hours.



Immunofluorescent analysis of (4% PFA) fixed mouse brain tissue using 60189-1-Ig (NF-L antibody) at dilution of 1:50 and Alexa Fluor 488-conjugated AffiniPure Goat Anti-Mouse IgG(H+L).