

À des fins de recherche uniquement

Anticorps Monoclonal anti-ESR2

Numéro de catalogue: 60197-1-Ig

Phare

8 Publications



Informations de base

Numéro de catalogue: 60197-1-Ig	Numéro d'acquisition GenBank: BC024181	Méthode de purification: Purification par protéine G
Taille: 150ul, Concentration: 1300 µg/ml by Nanodrop and 1000 µg/ml by Bradford method using BSA as the standard;	Identification du gène (NCBI): 2100	CloneNo.: 5D2C9
Hôte: Mouse	Nom complet: estrogen receptor 2 (ER beta)	Dilutions recommandées: WB 1:1000-1:4000
Isotype: IgG1	MW calculé: 59 kDa	
Immunogen Catalog Number: AG5103	MW observés: 50-60 kDa	

Applications

Applications testées: WB, ELISA	Contrôles positifs: WB : cellules MCF-7, cellules SW-1990, tissu cérébral humain
Demandes citées: IF, IHC, WB	
Spécificité de l'espèce: Humain, souris	
Espèces citées: Humain, souris	

Informations générales

Estrogen receptor-beta (ESR2) is a member of the superfamily of nuclear receptors, which can transduce extracellular signals into transcriptional responses. It binds estrogens with an affinity similar to that of ESR1, and activates expression of reporter genes containing estrogen response elements (ERE) in an estrogen-dependent manner. DNA-binding by ESR1 and ESR2 is rapidly lost at 37 degrees Celsius in the absence of ligand while in the presence of 17 beta-estradiol and 4-hydroxy-tamoxifen loss in DNA-binding at elevated temperature is more gradual. ESR2 exists various isoform and range of calculated molecular weight of isoforms is 50-60 kDa. The experiment detected two bands for ESR2 in isolated human germ cells, one at 60 kDa and a weaker one at 50 kDa (PMID: 14766008).

Publications notables

Autrice	Pubmed ID	Journal	Application
Chenglin Yang	36257561	Environ Pollut	WB
Qi Su	34792729	Mol Biol Rep	WB,IF
Chun Pan	36522098	J Environ Sci (China)	IHC

Stockage

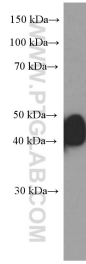
Stockage:
Stocker à -20°C. Stable pendant un an après l'expédition.
Tampon de stockage:
PBS avec azoture de sodium à 0,02 % et glycérol à 50 % pH 7,3
L'aliquotage n'est pas nécessaire pour le stockage à -20C

*** Les 20ul contiennent 0,1% de BSA.

For technical support and original validation data for this product please contact:
T: 1 (888) 4PTGLAB (1-888-478-4522) (toll free in USA), or 1(312) 455-8498 (outside USA)
E: proteintech@ptglab.com
W: ptglab.com

This product is exclusively available under Proteintech Group brand and is not available to purchase from any other manufacturer.

Données de validation sélectionnées



MCF-7 cells were subjected to SDS PAGE followed by western blot with 60197-1-Ig (ESR2 Antibody) at dilution of 1:2000 incubated at room temperature for 1.5 hours.