

À des fins de recherche uniquement

Anticorps Monoclonal anti-CD23

Numéro de catalogue: 60208-1-Ig **4 Publications**



Informations de base

Numéro de catalogue: 60208-1-Ig	Numéro d'acquisition GenBank: BC064417	Méthode de purification: Purification par protéine G
Taille: 150ul , Concentration: 507 µg/ml by Bradford method using BSA as the standard;	Identification du gène (NCBI): 2208	CloneNo.: 3H6B8
Hôte: Mouse	Nom complet: Fc fragment of IgE, low affinity II, receptor for (CD23)	Dilutions recommandées: WB 1:2000-1:8000 IHC 1:50-1:500 IF 1:50-1:500
Isotype: IgG1	MW calculé 321 aa, 36 kDa	
Immunogen Catalog Number: AG0425	MW observés: 38 kDa	

Applications

Applications testées:

IF, IHC, WB, ELISA

Demandes citées:

IF, IHC, WB

Spécificité de l'espèce:

Humain, souris

Espèces citées:

Humain, souris

Remarque-IHC: il est suggéré de démasquer l'antigène avec un tampon de TE buffer pH 9,0; (*) A défaut, 'le démasquage de l'antigène peut être 'effectué avec un tampon citrate pH 6,0.

Contrôles positifs:

WB : cellules DC2.4, cellules Daudi, cellules Raji, cellules Ramos

IHC : tissu d'amygdalite humain, tissu de lymphome humain

IF : tissu d'amygdalite humain,

Informations générales

CD23, also known as low affinity immunoglobulin epsilon Fc receptor, is a transmembrane glycoprotein present on a subpopulation of B lymphocytes in germinal centres, EBV-transformed B-lymphoblastoid cell lines, follicular dendritic cells, and a subpopulation of peripheral blood cells. CD23 has essential roles in the regulation of IgE production and in the differentiation of B-cells.

Publications notables

Autrice	Pubmed ID	Journal	Application
Kiyoko Maruyama	34719578	Biol Pharm Bull	WB,IF
Ivan K Chinn	34315806	Sci Signal	IF
Qing Wang	37525587	Clin Transl Med	IHC,IF

Stockage

Stockage:

Stocker à -20°C. Stable pendant un an après l'expédition.

Tampon de stockage:

PBS avec azoture de sodium à 0,02 % et glycérol à 50 % pH 7,3

L'aliquotage n'est pas nécessaire pour le stockage à -20C

***** Les 20ul contiennent 0,1% de BSA.**

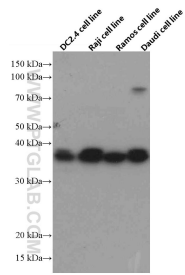
For technical support and original validation data for this product please contact:

T: 1 (888) 4PTGLAB (1-888-478-4522) (toll free in USA), or 1(312) 455-8498 (outside USA)

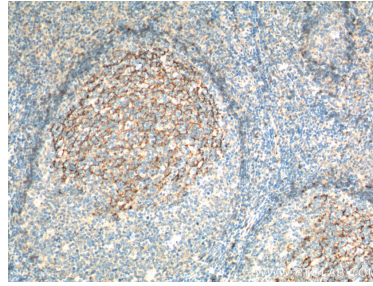
E: proteintech@ptglab.com
W: ptglab.com

This product is exclusively available under Proteintech Group brand and is not available to purchase from any other manufacturer.

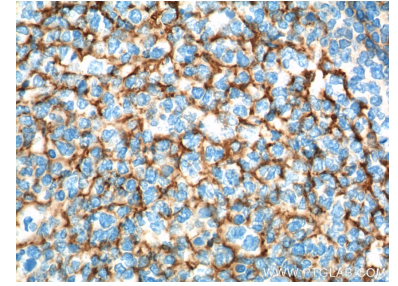
Données de validation sélectionnées



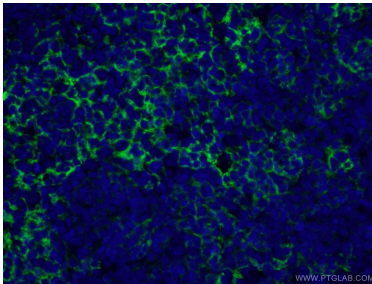
DC2.4, Raji, Ramos and Daudi cells were subjected to SDS PAGE followed by western blot with 60208-1-Ig (CD23 antibody) at dilution of 1:4000 incubated at room temperature for 1.5 hours.



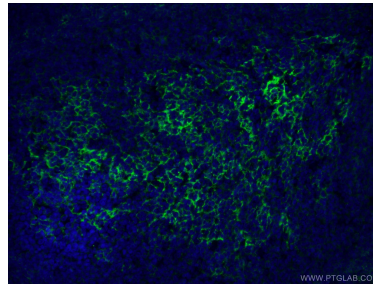
Immunohistochemical analysis of paraffin-embedded human tonsillitis tissue slide using 60208-1-Ig (CD23 antibody at dilution of 1:200 (under 10x lens). Heat mediated antigen retrieval with Tris-EDTA buffer (pH 9.0).



Immunohistochemical analysis of paraffin-embedded human tonsillitis tissue slide using 60208-1-Ig (CD23 antibody at dilution of 1:200 (under 40x lens). Heat mediated antigen retrieval with Tris-EDTA buffer (pH 9.0).



Immunofluorescent analysis of (4% PFA) fixed human tonsillitis tissue using 60208-1-Ig (CD23 antibody) at dilution of 1:100 and Alexa Fluor 488-conjugated AffiniPure Goat Anti-Mouse IgG(H+L).



Immunofluorescent analysis of (4% PFA) fixed human tonsillitis tissue using 60208-1-Ig (CD23 antibody) at dilution of 1:100 and Alexa Fluor 488-conjugated AffiniPure Goat Anti-Mouse IgG(H+L).