

À des fins de recherche uniquement

# Anticorps Monoclonal anti-CD23

Numéro de catalogue: 60208-2-Ig



## Informations de base

Numéro de catalogue: 60208-2-Ig	Numéro d'acquisition GenBank: BC064417	Méthode de purification: Purification par protéine A
Taille: 150ul, Concentration: 1100 µg/ml by Nanodrop and 900 µg/ml by Bradford method using BSA as the standard;	Identification du gène (NCBI): 2208	CloneNo.: 4C7C9
Hôte: Mouse	Nom complet: Fc fragment of IgE, low affinity II, receptor for (CD23)	Dilutions recommandées: WB 1:1000-1:4000 IHC 1:50-1:500 IF 1:50-1:500
Isotype: IgG2a	MW calculé 321 aa, 36 kDa	
Immunogen Catalog Number: AG0425	MW observés: 40 kDa	

## Applications

Applications testées:  
FC, IF, IHC, WB, ELISA

Spécificité de l'espèce:  
Humain, souris

**Remarque-IHC: il est suggéré de démasquer l'antigène avec un tampon de TE buffer pH 9,0; (\*) À défaut, le démasquage de l'antigène peut être effectué avec un tampon citrate pH 6,0.**

Contrôles positifs:

WB : cellules Raji,

IHC : tissu d'amygdalite humain, tissu de lymphome humain

IF : tissu d'amygdalite humain,

## Informations générales

CD23, also known as low affinity immunoglobulin epsilon Fc receptor, is a transmembrane glycoprotein present on a subpopulation of B lymphocytes in germinal centres, EBV-transformed B-lymphoblastoid cell lines, follicular dendritic cells, and a subpopulation of peripheral blood cells. CD23 has essential roles in the regulation of IgE production and in the differentiation of B-cells.

## Stockage

Stockage:

Stocker à -20°C. Stable pendant un an après l'expédition.

Tampon de stockage:

PBS avec azoture de sodium à 0,02 % et glycérol à 50 % pH 7,3

L'aliquotage n'est pas nécessaire pour le stockage à -20C

\*\*\* Les 20ul contiennent 0,1% de BSA.

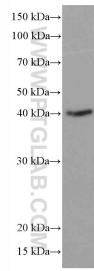
For technical support and original validation data for this product please contact:

T: 1 (888) 4PTGLAB (1-888-478-4522) (toll free in USA), or 1(312) 455-8498 (outside USA)

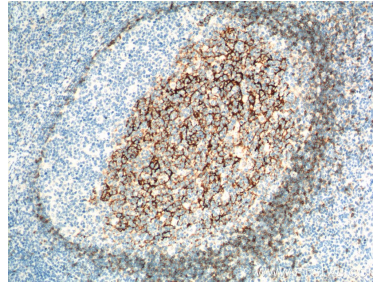
E: proteintech@ptglab.com  
W: ptglab.com

This product is exclusively available under Proteintech Group brand and is not available to purchase from any other manufacturer.

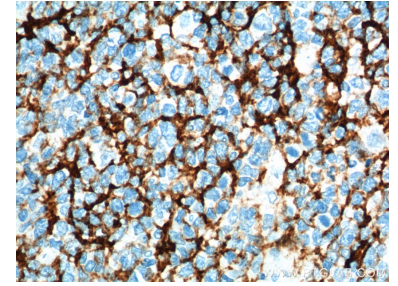
## Données de validation sélectionnées



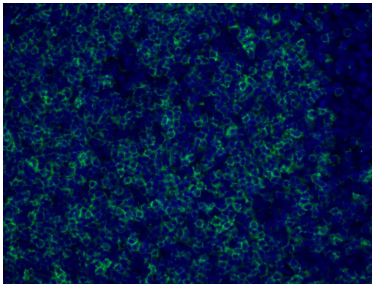
Raji cells were subjected to SDS PAGE followed by western blot with 60208-2-Ig (CD23 antibody) at dilution of 1:4000 incubated at room temperature for 1.5 hours.



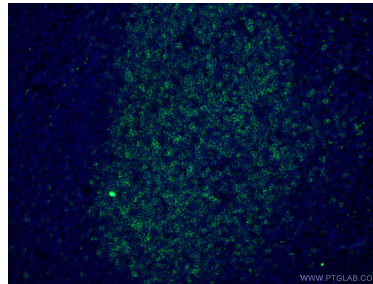
Immunohistochemical analysis of paraffin-embedded human tonsillitis tissue slide using 60208-2-Ig (CD23 antibody at dilution of 1:200 (under 10x lens). Heat mediated antigen retrieval with Tris-EDTA buffer (pH 9.0).



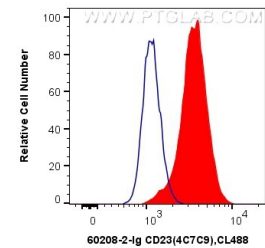
Immunohistochemical analysis of paraffin-embedded human tonsillitis tissue slide using 60208-2-Ig (CD23 antibody at dilution of 1:200 (under 40x lens). Heat mediated antigen retrieval with Tris-EDTA buffer (pH 9.0).



Immunofluorescent analysis of (4% PFA) fixed human tonsillitis tissue using 60208-2-Ig (CD23 antibody) at dilution of 1:100 and Alexa Fluor 488-conjugated AffiniPure Goat Anti-Mouse IgG(H+L).



Immunofluorescent analysis of (4% PFA) fixed human tonsillitis tissue using 60208-2-Ig (CD23 antibody) at dilution of 1:100 and Alexa Fluor 488-conjugated AffiniPure Goat Anti-Mouse IgG(H+L).



$1 \times 10^6$  Raji cells were intracellularly stained with 0.5 ug Anti-Human CD23 (60208-2-Ig, Clone:4C7C9) and CoraLite®488-Conjugated AffiniPure Goat Anti-Mouse IgG(H+L) at dilution 1:1000 (red), or 0.5 ug Mouse IgG2a Isotype Control (66360-2-Ig, Clone: K11A1B2A2) (blue). Cells were fixed with 4% PFA and permeabilized with Flow Cytometry Perm Buffer (PF00011-C).