

À des fins de recherche uniquement

Anticorps Monoclonal anti-BCS1L

Numéro de catalogue: 60212-1-Ig Phare



Informations de base

Numéro de catalogue: 60212-1-Ig	Numéro d'acquisition GenBank: BC007500	Méthode de purification: Purification par protéine G
Taille: 150ul , Concentration: 1100 µg/ml by Nanodrop and 860 µg/ml by Bradford method using BSA as the standard;	Identification du gène (NCBI): 617	CloneNo.: 3G6H1
Hôte: Mouse	Nom complet: BCS1-like (yeast)	Dilutions recommandées: WB 1:500-1:2000 IHC 1:20-1:200 IF 1:20-1:200
Isotype: IgG1	MW calculé: 48 kDa	
Immunogen Catalog Number: AG18280	MW observés: 47 kDa	

Applications

Applications testées: IF, IHC, WB, ELISA	Contrôles positifs:
Spécificité de l'espèce: Humain, souris	WB : cellules Colo320, cellules COLO 320, cellules HEK-293
Remarque-IHC: il est suggéré de démasquer l'antigène avec un tampon de TE buffer pH 9.0; (*) À défaut, 'le démasquage de l'antigène peut être 'effectué avec un tampon citrate pH 6,0.	IHC : tissu de gliome humain, tissu cérébral humain, tissu rénal humain
	IF : cellules MCF-7,

Informations générales

Human BCS1-like (BCS1L), a mitochondrial inner-membrane protein, is a chaperone necessary for the assembly of mitochondrial respiratory chain complex III. Recently studies indicated that the mutations in this protein may cause the GRACILE (growth retardation, aminoaciduria, cholestasis, iron overload, lacticidosis, and early death) syndrome, a recessively inherited lethal disease characterized by fetal growth retardation, lactic acidosis, aminoaciduria, cholestasis, and abnormalities in iron metabolism.

Stockage

Stockage:
Stocker à -20°C. Stable pendant un an après l'expédition.
Tampon de stockage:
PBS avec azoture de sodium à 0,02 % et glycérol à 50 % pH 7,3
L'aliquotage n'est pas nécessaire pour le stockage à -20C

*** Les 20ul contiennent 0,1% de BSA.

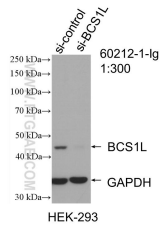
For technical support and original validation data for this product please contact:

T: 1 (888) 4PTGLAB (1-888-478-4522) (toll free in USA), or 1(312) 455-8498 (outside USA)

E: proteintech@ptglab.com
W: ptglab.com

This product is exclusively available under Proteintech Group brand and is not available to purchase from any other manufacturer.

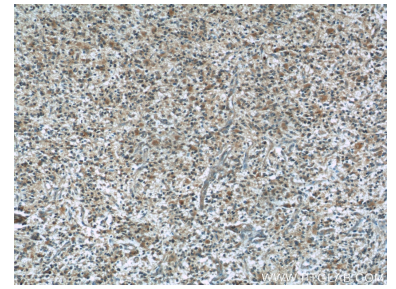
Données de validation sélectionnées



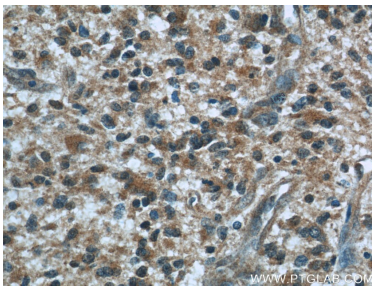
WB result of BCS1L antibody (60212-1-Ig; 1:300; incubated at room temperature for 1.5 hours) with sh-Control and sh-BCS1L transfected HEK-293 cells.



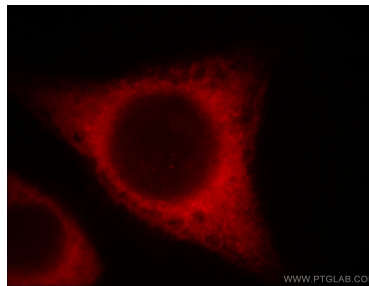
COLO 320 cells were subjected to SDS PAGE followed by western blot with 60212-1-Ig (BCS1L antibody) at dilution of 1:1000 incubated at room temperature for 1.5 hours.



Immunohistochemical analysis of paraffin-embedded human gliomas using 60212-1-Ig (BCS1L antibody) at dilution of 1:50 (under 10x lens).



Immunohistochemical analysis of paraffin-embedded human gliomas using 60212-1-Ig (BCS1L antibody) at dilution of 1:50 (under 40x lens).



Immunofluorescent analysis of () fixed MCF-7 cells using 60212-1-Ig (BCS1L antibody) at dilution of 1:50 and Rhodamine-Goat anti-Rabbit IgG.