

À des fins de recherche uniquement

# Anticorps Monoclonal anti-transgeline/SM22



Numéro de catalogue: 60213-1-Ig

11 Publications

## Informations de base

Numéro de catalogue: 60213-1-Ig	Numéro d'acquisition GenBank: BC004927	Méthode de purification: Purification par protéine A
Taille: 150ul, Concentration: 700 µg/ml by Bradford method using BSA as the standard;	Identification du gène (NCBI): 6876	CloneNo.: 2A10C2
Hôte: Mouse	Nom complet: transgeline	Dilutions recommandées: WB 1:5000-1:50000 IHC 1:50-1:400 IF 1:50-1:500
Isotype: IgG1	MW calculé: 22 kDa	
Immunogen Catalog Number: AG0764	MW observés: 18+22 kDa	

## Applications

### Applications testées:

IF, IHC, WB, ELISA

### Demandes citées:

FC, IF, WB

### Spécificité de l'espèce:

Humain, porc, rat, souris, souris

### Espèces citées:

Humain, rat, souris

**Remarque-IHC: il est suggéré de démasquer l'antigène avec un tampon de TE buffer pH 9,0; (\*) A défaut, 'le démasquage de l'antigène peut être effectué avec un tampon citrate pH 6,0.**

### Contrôles positifs:

WB : tissu de côlon de porc, tissu de côlon de rat, tissu de côlon de souris, tissu de côlon humain, tissu d'estomac de lapin, tissu d'estomac de porc, tissu d'estomac de rat, tissu d'estomac humain

IHC : tissu de côlon humain, tissu cardiaque humain

IF : tissu cardiaque de souris,

## Informations générales

The transgeline family is a group of proteins that belong to 22 kDa actin-related corpnin superfamily. Of all three isoforms, transgeline 1 is the best characterized. Transgeline 1, also known as SM22 alpha, is a specific marker for differentiated smooth muscle cells. Transgeline 2, also known as SM22 beta, is expressed by both smooth muscle and non-smooth muscle cells in a temporally and spatially regulated pattern. Transgeline 3, also known as NP25, is only found in highly differentiated neuronal cells.

## Publications notables

Autrice	Pubmed ID	Journal	Application
Ji-Ting Liu	34604241	Front Cell Dev Biol	WB
Sarah Lang	29152087	Oncotarget	WB
Lin Liu	36309970	Clin Exp Pharmacol Physiol	WB

## Stockage

### Stockage:

Stocker à -20°C. Stable pendant un an après l'expédition.

### Tampon de stockage:

PBS avec azoture de sodium à 0,02 % et glycérol à 50 % pH 7,3

L'aliquotage n'est pas nécessaire pour le stockage à -20C

\*\*\* Les 20ul contiennent 0,1% de BSA.

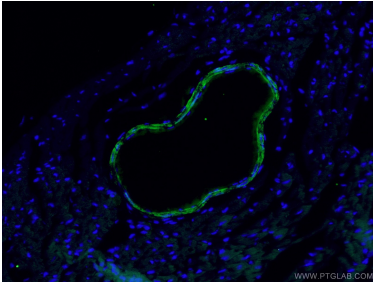
For technical support and original validation data for this product please contact:

T: 1 (888) 4PTGLAB (1-888-478-4522) (toll free in USA), or 1(312) 455-8498 (outside USA)

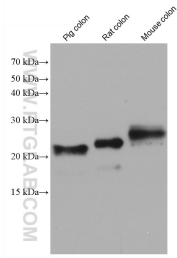
E: proteintech@ptglab.com  
W: ptglab.com

This product is exclusively available under Proteintech Group brand and is not available to purchase from any other manufacturer.

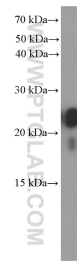
## Données de validation sélectionnées



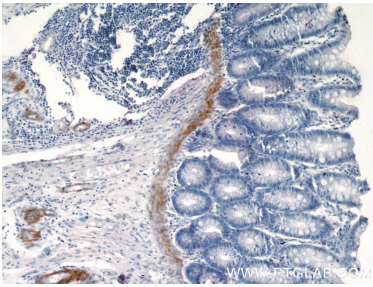
Immunofluorescent analysis of (4% PFA) fixed mouse heart tissue using 60213-1-Ig (transgelin/SM22 antibody) at dilution of 1:50 and Alexa Fluor 488-conjugated AffiniPure Goat Anti-Mouse IgG(H+L).



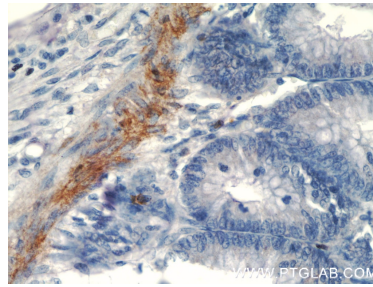
Various lysates were subjected to SDS PAGE followed by western blot with 60213-1-Ig (transgelin/SM22 antibody) at dilution of 1:20000 incubated at room temperature for 1.5 hours.



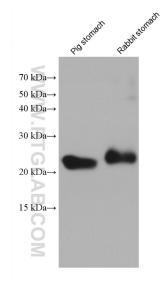
human colon tissue were subjected to SDS PAGE followed by western blot with 60213-1-Ig (transgelin/SM22 antibody at dilution of 1:4000 incubated at room temperature for 1.5 hours.



Immunohistochemical analysis of paraffin-embedded human colon tissue slide using 60213-1-Ig (transgelin/SM22 antibody at dilution of 1:200 (under 10x lens).



Immunohistochemical analysis of paraffin-embedded human colon tissue slide using 60213-1-Ig (transgelin/SM22 antibody at dilution of 1:200 (under 40x lens).



Various lysates were subjected to SDS PAGE followed by western blot with 60213-1-Ig (transgelin/SM22 antibody) at dilution of 1:20000 incubated at room temperature for 1.5 hours.