

À des fins de recherche uniquement

# Anticorps Monoclonal anti-IL-20RB

Numéro de catalogue: 60221-1-Ig

Phare

1 Publications



## Informations de base

<b>Numéro de catalogue:</b> 60221-1-Ig	<b>Numéro d'acquisition GenBank:</b> BC033292	<b>Méthode de purification:</b> Purification par protéine A
<b>Taille:</b> 150ul, Concentration: 2200 µg/ml by Nanodrop and 1467 µg/ml by Bradford method using BSA as the standard;	<b>Identification du gène (NCBI):</b> 53833	<b>CloneNo.:</b> 1A2A3
<b>Hôte:</b> Mouse	<b>Nom complet:</b> interleukin 20 receptor beta	<b>Dilutions recommandées:</b> WB 1:500-1:2000
<b>Isotype:</b> IgG2b	<b>MW calculé:</b> 311 aa, 35 kDa	
<b>Immunogen Catalog Number:</b> AG14368	<b>MW observés:</b> 35 kDa	

## Applications

<b>Applications testées:</b> FC, WB, ELISA	<b>Contrôles positifs:</b> WB : cellules HeLa,
<b>Demandes citées:</b> WB	
<b>Spécificité de l'espèce:</b> Humain	
<b>Espèces citées:</b> Humain	

## Informations générales

Interleukin-20 receptor subunit beta (IL20RB) is a single-pass type I membrane protein of the type II cytokine receptor family. The interleukin-20-receptor I complex (IL-20-RI) is composed of two chains, IL20RA and IL20RB. IL-20-RI is a receptor for IL-19, IL-20 and IL-24. IL20RB can also form a heterodimer with IL22RA1. The IL22RA1/IL20RB dimer is a receptor for IL20 and IL24.

## Publications notables

Autrice	Pubmed ID	Journal	Application
Jia Li	34114949	Elife	WB

## Stockage

**Stockage:**  
Stocker à -20°C. Stable pendant un an après l'expédition.  
**Tampon de stockage:**  
PBS avec azoture de sodium à 0,02 % et glycérol à 50 % pH 7,3  
L'aliquotage n'est pas nécessaire pour le stockage à -20C

\*\*\* Les 20ul contiennent 0,1% de BSA.

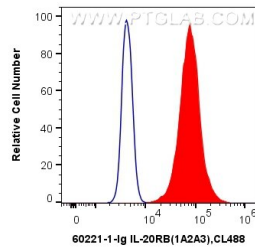
For technical support and original validation data for this product please contact:

T: 1 (888) 4PTGLAB (1-888-478-4522) (toll free in USA), or 1(312) 455-8498 (outside USA)

E: proteintech@ptglab.com  
W: ptglab.com

This product is exclusively available under Proteintech Group brand and is not available to purchase from any other manufacturer.

## Données de validation sélectionnées



HeLa cells were subjected to SDS PAGE followed by western blot with 60221-1-Ig (IL20RB antibody) at dilution of 1:1000 incubated at room temperature for 1.5 hours.

$1 \times 10^6$  HeLa cells were intracellularly stained with 0.4  $\mu$ g Anti-Human IL-20RB (60221-1-Ig, Clone:1A2A3) and CoraLite@488-Conjugated AffiniPure Goat Anti-Mouse IgG(H+L) at dilution 1:1000 (red), or 0.4  $\mu$ g Control Antibody. Cells were fixed with 4% PFA and permeabilized with Flow Cytometry Perm Buffer (PF00011-C).