

À des fins de recherche uniquement

Anticorps Monoclonal anti-Galectin-1



Numéro de catalogue: 60223-1-Ig

4 Publications

Informations de base

Numéro de catalogue: 60223-1-Ig	Numéro d'acquisition GenBank: BC020675	Méthode de purification: Purification par protéine A
Taille: 150ul , Concentration: 2300 µg/ml by Nanodrop and 1500 µg/ml by Bradford method using BSA as the standard;	Identification du gène (NCBI): 3956	CloneNo.: 3G10D2
Hôte: Mouse	Nom complet: lectin, galactoside-binding, soluble,	Dilutions recommandées: 1 WB 1:5000-1:50000 IHC 1:2000-1:8000 IF 1:400-1:1600
Isotype: IgG1	MW calculé: 15 kDa	
Immunogen Catalog Number: AG2432	MW observés: 13 kDa	

Applications

Applications testées:

IF, IHC, WB, ELISA

Demandes citées:

IF, WB

Spécificité de l'espèce:

Humain

Espèces citées:

Humain

Remarque-IHC: il est suggéré de démasquer l'antigène avec un tampon de TE buffer pH 9,0; (*) A défaut, 'le démasquage de l'antigène peut être effectué avec un tampon citrate pH 6,0.

Contrôles positifs:

WB : cellules HCT 116, cellules A549, cellules HeLa, cellules HepG2, cellules L02, cellules U2OS, tissu cardiaque humain, tissu placentaire humain

IHC : tissu de cancer du côlon humain, tissu de cancer du pancréas humain

IF : cellules U2OS, tissu de cancer du côlon humain

Informations générales

Galectins are a family of animal lectins defined by shared characteristic amino-acid sequences and affinity for β -galactose-containing oligosaccharides (PMID: 8063692). Galectin-1 contains one carbohydrate recognition domain (CRD) and occurs as a monomer as well as a non-covalent homodimer (PMID: 16840800). It is differentially expressed by various normal and pathological tissues. Galectin-1 is a multifunctional protein that is involved in cell adhesion, migration, proliferation, apoptosis, inflammation, tumour transformation and growth (PMID:15785741).

Publications notables

Autrice	Pubmed ID	Journal	Application
Qi Zhang	36177897	Int J Oncol	IF
Marilyne Labrie	29038585	Sci Rep	IF
Maria Claudia Vladoiu	26543238	Oncotarget	WB

Stockage

Stockage:

Stocker à -20°C. Stable pendant un an après l'expédition.

Tampon de stockage:

PBS avec azoture de sodium à 0,02 % et glycérol à 50 % pH 7,3

L'aliquotage n'est pas nécessaire pour le stockage à -20C

*** Les 20ul contiennent 0,1% de BSA.

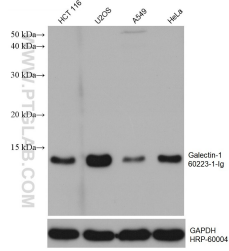
For technical support and original validation data for this product please contact:

T: 1 (888) 4PTGLAB (1-888-478-4522) (toll free in USA), or 1(312) 455-8498 (outside USA)

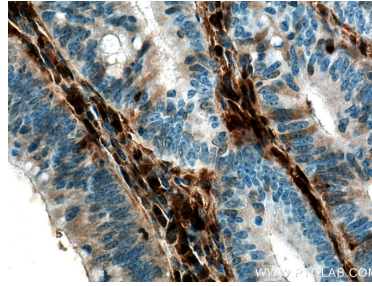
E: proteintech@ptglab.com
W: ptglab.com

This product is exclusively available under Proteintech Group brand and is not available to purchase from any other manufacturer.

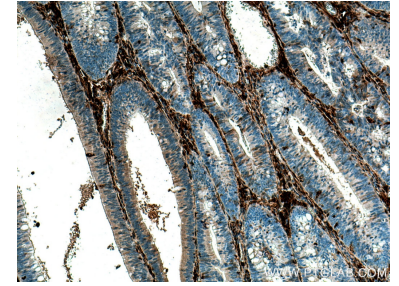
Données de validation sélectionnées



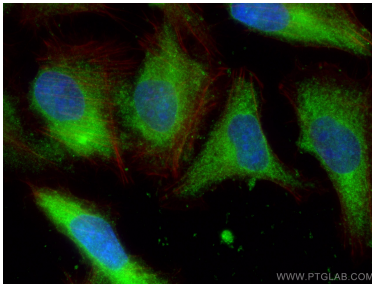
Various lysates were subjected to SDS PAGE followed by western blot with 60223-1-Ig (Galectin-1 antibody) at dilution of 1:15000 incubated at room temperature for 1.5 hours. The membrane was stripped and reblotted with HRP-conjugated GAPDH Monoclonal antibody (HRP-60004) as loading control.



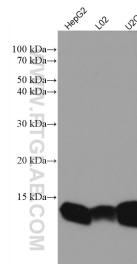
Immunohistochemical analysis of paraffin-embedded human colon cancer tissue slide using 60223-1-Ig (Galectin-1 antibody) at dilution of 1:4000 (under 40x lens). Heat mediated antigen retrieval with Tris-EDTA buffer (pH 9.0).



Immunohistochemical analysis of paraffin-embedded human colon cancer tissue slide using 60223-1-Ig (Galectin-1 antibody) at dilution of 1:4000 (under 10x lens). Heat mediated antigen retrieval with Tris-EDTA buffer (pH 9.0).



Immunofluorescent analysis of (-20°C Ethanol) fixed U2OS cells using Galectin-1 antibody (60223-1-Ig, Clone: 3G10D2) at dilution of 1:800 and CoraLite@488-Conjugated AffiniPure Goat Anti-Mouse IgG(H+L), CL594-Phalloidin (red).



Various lysates were subjected to SDS PAGE followed by western blot with 60223-1-Ig (Galectin-1 antibody) at dilution of 1:3000 incubated at room temperature for 1.5 hours.