

À des fins de recherche uniquement

Anticorps Monoclonal anti-Desmin

Numéro de catalogue: 60226-1-Ig **8 Publications**



Informations de base

Numéro de catalogue: 60226-1-Ig	Numéro d'acquisition GenBank: BC032116	Méthode de purification: Purification par protéine A
Taille: 150ul , Concentration: 1200 µg/ml by Bradford method using BSA as the standard;	Identification du gène (NCBI): 1674	CloneNo.: 3E12C8
Hôte: Mouse	Nom complet: desmin	Dilutions recommandées: WB 1:500-1:2000
Isotype: IgG2a	MW calculé 470 aa, 54 kDa	
Immunogen Catalog Number: AG9675	MW observés: 55 kDa	

Applications

Applications testées:

WB, ELISA

Demandes citées:

IF, IHC, WB

Spécificité de l'espèce:

Humain, porc

Espèces citées:

Humain, rat, souris

Contrôles positifs:

WB : Coeur humain, tissu cardiaque de porc, tissu cardiaque humain, tissu de côlon de porc, tissu placentaire humain, tissu testiculaire humain

Informations générales

Desmin is the main intermediate filament protein in skeletal and cardiac muscle cells and is essential for both the structural integrity and the survival of muscle cells. As an abundant muscle-specific protein, desmin has been widely used as a marker of muscle derived tumors. Anti-desmin is also valuable in the differential diagnosis of tumors of uncertain origin.

Publications notables

Autrice	Pubmed ID	Journal	Application
Qian Feng	27986413	Reprod Biomed Online	IF
Xiaohong Xu	34107901	BMC Nephrol	WB
Pan Gao	25017793	Biochim Biophys Acta	WB

Stockage

Stockage:

Stocker à -20°C. Stable pendant un an après l'expédition.

Tampon de stockage:

PBS avec azoture de sodium à 0,02 % et glycérol à 50 % pH 7,3

L'aliquotage n'est pas nécessaire pour le stockage à -20C

***** Les 20ul contiennent 0,1% de BSA.**

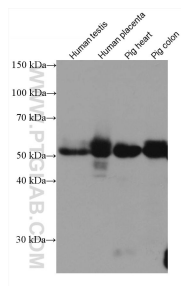
For technical support and original validation data for this product please contact:

T: 1 (888) 4PTGLAB (1-888-478-4522) (toll free
in USA), or 1(312) 455-8498 (outside USA)

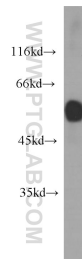
E: proteintech@ptglab.com
W: ptglab.com

This product is exclusively available under Proteintech Group brand and is not available to purchase from any other manufacturer.

Données de validation sélectionnées



Various lysates were subjected to SDS PAGE followed by western blot with 60226-1-Ig (Desmin antibody) at dilution of 1:5000 incubated at room temperature for 1.5 hours.



human heart tissue were subjected to SDS PAGE followed by western blot with 60226-1-Ig (DES antibody) at dilution of 1:1000 incubated at room temperature for 1.5 hours.