

À des fins de recherche uniquement

Anticorps Monoclonal anti-Cytoglobin



Numéro de catalogue: 60228-1-Ig

2 Publications

Informations de base

Numéro de catalogue: 60228-1-Ig	Numéro d'acquisition GenBank: BC029798	Méthode de purification: Purification par protéine A
Taille: 150ul, Concentration: 1000 µg/ml by Bradford method using BSA as the standard;	Identification du gène (NCBI): 114757	CloneNo.: 4C7E11
Hôte: Mouse	Nom complet: cytoglobin	Dilutions recommandées: WB 1:500-1:2000 IHC 1:200-1:800 IF 1:200-1:800
Isotype: IgG1	MW calculé 190 aa, 21 kDa	
Immunogen Catalog Number: AG4161	MW observés: 27-29 kDa	

Applications

Applications testées:

IF, IHC, WB, ELISA

Demandes citées:

IF, WB

Spécificité de l'espèce:

Humain, porc, rat, souris

Espèces citées:

Humain

Remarque-IHC: il est suggéré de démasquer l'antigène avec un tampon de TE buffer pH 9,0; (*) A défaut, 'le démasquage de l'antigène peut être 'effectué avec un tampon citrate pH 6,0.

Contrôles positifs:

WB : Coeur humain, cellules HEK-293 transfectées, tissu cardiaque de lapin, tissu cardiaque de porc, tissu cardiaque humain

IHC : tissu hépatique humain, tissu cardiaque humain, tissu vésical humain

IF : cellules HeLa,

Informations générales

Cytoglobin is a ubiquitously expressed hexacoordinate hemoglobin that may facilitate diffusion of oxygen through tissues. The protein, with calculated MW of 21 kDa, runs as a 29 kDa one in canine retina, kidney, liver, lung, and heart. It may be caused by posttranslational modification of the protein. Various immuno-staining patterns were reported including nuclear, cytoplasm and extracellular location.

Publications notables

Autrice	Pubmed ID	Journal	Application
Shazhou Ye	33611811	J Cell Mol Med	WB
Peng Zhou	35397613	Cell Death Dis	WB,IF

Stockage

Stockage:

Stocker à -20°C. Stable pendant un an après l'expédition.

Tampon de stockage:

PBS avec azoture de sodium à 0,02 % et glycérol à 50 % pH 7,3

L'aliquotage n'est pas nécessaire pour le stockage à -20C

*** Les 20ul contiennent 0,1% de BSA.

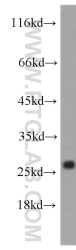
For technical support and original validation data for this product please contact:

T: 1 (888) 4PTGLAB (1-888-478-4522) (toll free in USA), or 1(312) 455-8498 (outside USA)

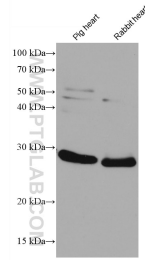
E: proteintech@ptglab.com
W: ptglab.com

This product is exclusively available under Proteintech Group brand and is not available to purchase from any other manufacturer.

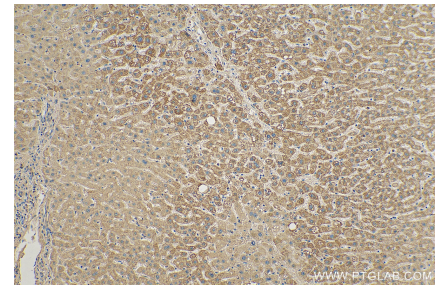
Données de validation sélectionnées



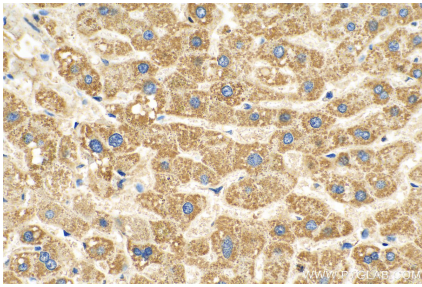
human heart tissue were subjected to SDS PAGE followed by western blot with 60228-1-Ig (Cytoglobin antibody) at dilution of 1:1000 incubated at room temperature for 1.5 hours.



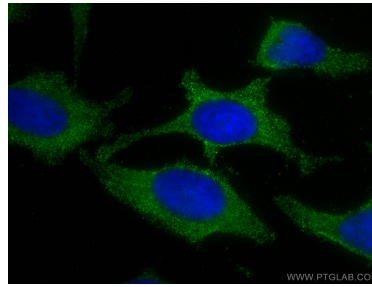
Various lysates were subjected to SDS PAGE followed by western blot with 60228-1-Ig (Cytoglobin antibody) at dilution of 1:10000 incubated at room temperature for 1.5 hours.



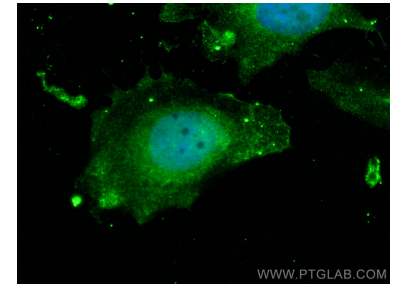
Immunohistochemical analysis of paraffin-embedded human liver tissue slide using 60228-1-Ig (Cytoglobin antibody) at dilution of 1:400 (under 10x lens). Heat mediated antigen retrieval with Tris-EDTA buffer (pH 9.0).



Immunohistochemical analysis of paraffin-embedded human liver tissue slide using 60228-1-Ig (Cytoglobin antibody) at dilution of 1:400 (under 40x lens). Heat mediated antigen retrieval with Tris-EDTA buffer (pH 9.0).



Immunofluorescent analysis of (-20°C Methanol) fixed HeLa cells using Cytoglobin antibody (60228-1-Ig, Clone: 4C7E11) at dilution of 1:400 and CoraLite@488-Conjugated AffiniPure Goat Anti-Mouse IgG(H+L).



Immunofluorescent analysis of (4% PFA) fixed HeLa cells using Cytoglobin antibody (60228-1-Ig, Clone: 4C7E11) at dilution of 1:800 and CoraLite@488-Conjugated AffiniPure Goat Anti-Mouse IgG(H+L).