

À des fins de recherche uniquement

Anticorps Monoclonal anti-Myosin Light Chain 2/MLC-2V



Numéro de catalogue: 60229-1-Ig **3 Publications**

Informations de base

Numéro de catalogue: 60229-1-Ig	Numéro d'acquisition GenBank: BC015821	Méthode de purification: Purification par protéine A
Taille: 150ul, Concentration: 1500 µg/ml by Nanodrop;	Identification du gène (NCBI): 4633	CloneNo.: 5A1F1
Hôte: Mouse	Nom complet: myosin, light chain 2, regulatory, cardiac, slow	Dilutions recommandées: WB 1:5000-1:50000 IHC 1:500-1:2000 IF 1:400-1:1600
Isotype: IgG1	MW calculé: 19 kDa	
Immunogen Catalog Number: AG1356	MW observés: 18 kDa	

Applications

Applications testées:

IF, IHC, WB, ELISA

Demandes citées:

IF, WB

Spécificité de l'espèce:

Humain, Lapin, porc, rat, souris

Espèces citées:

Humain, rat

Contrôles positifs:

WB : tissu cardiaque humain, tissu cardiaque de lapin, tissu cardiaque de porc, tissu cardiaque de rat

IHC : tissu cardiaque de souris, tissu cardiaque humain, tissu de muscle squelettique de souris

IF : cellules C2C12,

Remarque-IHC: il est suggéré de démasquer l'antigène avec un tampon de TE buffer pH 9,0; (*) À défaut, le démasquage de l'antigène peut être effectué avec un tampon citrate pH 6,0.

Informations générales

MYL2, also named as MLC-2v and MLC-2, is ventricular/cardiac muscle isoform. Defects in MYL2 are the cause of cardiomyopathy familial hypertrophic type 10 (CMH10). Defects in MYL2 are the cause of cardiomyopathy familial hypertrophic with mid-left ventricular chamber type 2 (MVC2). MYL2 has been widely used as a marker of mature ventricular cardiomyocytes.

Publications notables

Autrice	Pubmed ID	Journal	Application
Xiangyu Zhang	35246800	Stem Cell Rev Rep	IF
Jingcheng Wang	36042011	Int J Stem Cells	WB
Y Wang	26269433	Stem Cells	IF

Stockage

Stockage:

Stocker à -20°C. Stable pendant un an après l'expédition.

Tampon de stockage:

PBS avec azoture de sodium à 0,02 % et glycérol à 50 % pH 7,3

L'aliquote n'est pas nécessaire pour le stockage à -20C

***** Les 20ul contiennent 0,1% de BSA.**

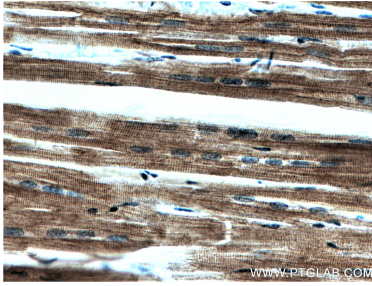
For technical support and original validation data for this product please contact:

T: 1 (888) 4PTGLAB (1-888-478-4522) (toll free in USA), or 1(312) 455-8498 (outside USA)

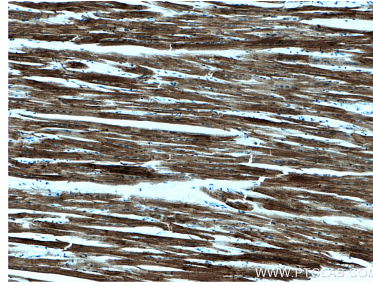
E: proteintech@ptglab.com
W: ptglab.com

This product is exclusively available under Proteintech Group brand and is not available to purchase from any other manufacturer.

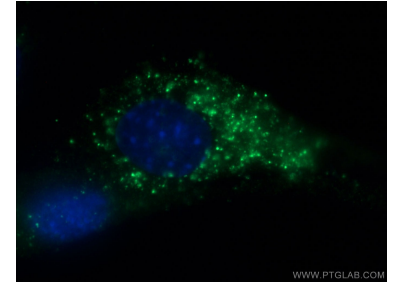
Données de validation sélectionnées



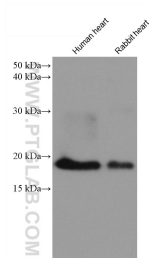
Immunohistochemical analysis of paraffin-embedded human heart tissue slide using 60229-1-Ig (Myosin Light Chain 2 antibody) at dilution of 1:500 (under 0x lens).



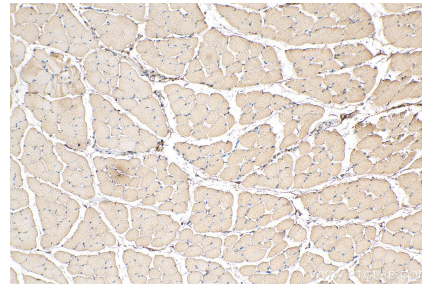
Immunohistochemical analysis of paraffin-embedded human heart tissue slide using 60229-1-Ig (Myosin Light Chain 2 antibody) at dilution of 1:500 (under 0x lens).



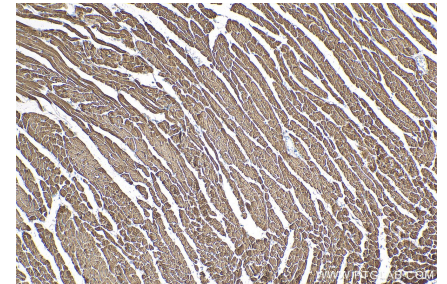
Immunofluorescent analysis of (4% PFA) fixed C2C12 cell using 60229-1-Ig (Myosin Light Chain 2 antibody) at dilution of 1:100 and Alexa Fluor 488-conjugated AffiniPure Goat Anti-Mouse IgG(H+L).



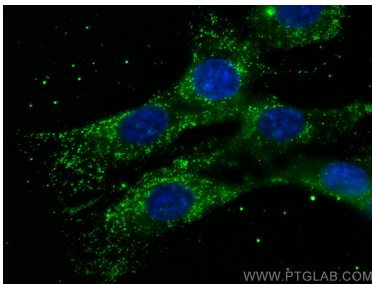
Various lysates were subjected to SDS PAGE followed by western blot with 60229-1-Ig (Myosin Light Chain 2/MLC-2V antibody) at dilution of 1:10000 incubated at room temperature for 1.5 hours.



Immunohistochemical analysis of paraffin-embedded mouse skeletal muscle tissue slide using 60229-1-Ig (Myosin Light Chain 2/MLC-2V antibody) at dilution of 1:1000 (under 10x lens). Heat mediated antigen retrieval with Tris-EDTA buffer (pH 9.0).



Immunohistochemical analysis of paraffin-embedded mouse heart tissue slide using 60229-1-Ig (Myosin Light Chain 2/MLC-2V antibody) at dilution of 1:1000 (under 10x lens). Heat mediated antigen retrieval with Tris-EDTA buffer (pH 9.0).



Immunofluorescent analysis of (-20°C Methanol) fixed C2C12 cells using Myosin Light Chain 2/MLC-2V antibody (60229-1-Ig, Clone: 5A1F1) at dilution of 1:800 and CoraLite@488-Conjugated AffiniPure Goat Anti-Mouse IgG(H+L).