

À des fins de recherche uniquement

# Anticorps Monoclonal anti-PLAA

Numéro de catalogue: 60244-1-Ig Phare



## Informations de base

Numéro de catalogue: 60244-1-Ig	Numéro d'acquisition GenBank: BC032551	Méthode de purification: Purification par protéine A
Taille: 150ul , Concentration: 1360 µg/ml by Bradford method using BSA as the standard;	Identification du gène (NCBI): 9373	CloneNo.: 5C10G9
Hôte: Mouse	Nom complet: phospholipase A2-activating protein	Dilutions recommandées: WB 1:500-1:2000 IHC 1:50-1:500
Isotype: IgG1	MW calculé 738 aa, 81 kDa	
Immunogen Catalog Number: AG3224	MW observés: 75-80 kDa	

## Applications

Applications testées:  
IHC, WB, ELISA

Spécificité de l'espèce:  
Humain, rat, souris

**Remarque-IHC: il est suggéré de démasquer l'antigène avec un tampon de TE buffer pH 9,0; (\*) À défaut, le démasquage de l'antigène peut être effectué avec un tampon citrate pH 6,0.**

Contrôles positifs:

WB : cellules ROS1728, cellules A431, cellules K-562, cellules MCF-7

IHC : tissu rénal humain,

## Informations générales

Phospholipase A-2-activating protein (PLAA), also named PLAP, can interact with ubiquitin and is involved in the maintenance of ubiquitin levels. PLAA contains multiple consensus domains including WD repeats, PFU domain and PUL domain. Although the function of PLAA remains unclear, ubiquitin binding of PLAA might be the central role that connects ubiquitination and degradation in ERAD. Recent finding revealed that PLAA served as a novel nociceptive mediator after incision, and its expression level is regulated by miR-203.

## Stockage

Stockage:  
Stocker à -20°C. Stable pendant un an après l'expédition.

Tampon de stockage:  
PBS avec azoture de sodium à 0,02 % et glycérol à 50 % pH 7,3  
L'aliquotage n'est pas nécessaire pour le stockage à -20C

\*\*\* Les 20ul contiennent 0,1% de BSA.

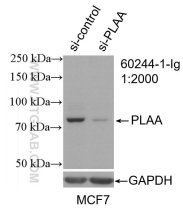
For technical support and original validation data for this product please contact:

T: 1 (888) 4PTGLAB (1-888-478-4522) (toll free  
in USA), or 1(312) 455-8498 (outside USA)

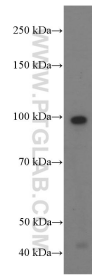
E: [proteintech@ptglab.com](mailto:proteintech@ptglab.com)  
W: [ptglab.com](http://ptglab.com)

This product is exclusively available under Proteintech Group brand and is not available to purchase from any other manufacturer.

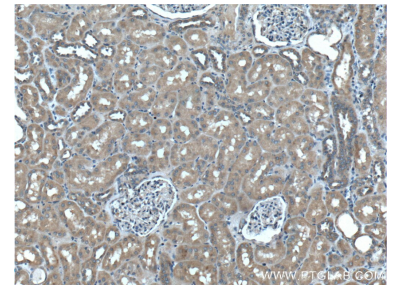
## Données de validation sélectionnées



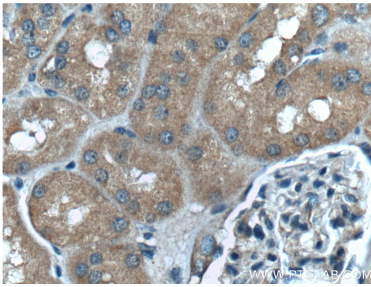
WB result of PLAA antibody (60244-1-Ig; 1:2000; incubated at room temperature for 1.5 hours) with sh-Control and sh-PLAA transfected MCF-7 cells.



ROS1728 cells were subjected to SDS PAGE followed by western blot with 60244-1-Ig (PLAA Antibody) at dilution of 1:1000 incubated at room temperature for 1.5 hours.



Immunohistochemical analysis of paraffin-embedded human kidney tissue slide using 60244-1-Ig (PLAA Antibody) at dilution of 1:200 (under 10x lens).



Immunohistochemical analysis of paraffin-embedded human kidney tissue slide using 60244-1-Ig (PLAA Antibody) at dilution of 1:200 (under 40x lens).