

À des fins de recherche uniquement

Anticorps Monoclonal anti-4EBP1

Numéro de catalogue: 60246-1-Ig

Phare

43 Publications



Informations de base

Numéro de catalogue: 60246-1-Ig	Numéro d'acquisition GenBank: BC004459	Méthode de purification: Purification par protéine A
Taille: 150ul, Concentration: 2800 µg/ml by Nanodrop and 1600 µg/ml by Bradford method using BSA as the standard;	Identification du gène (NCBI): 1978	CloneNo.: 2C3F3
Hôte: Mouse	Nom complet: eukaryotic translation initiation factor 4E binding protein 1	Dilutions recommandées: WB 1:1000-1:4000 IF 1:20-1:200
Isotype: IgG2b	MW calculé: 118 aa, 12 kDa	
Immunogen Catalog Number: AG18985	MW observés: 15-24 kDa	

Applications

Applications testées: IF, WB, ELISA	Contrôles positifs:
Demandes citées: IHC, WB	WB : cellules K-562, cellules C6, cellules HCT 116, cellules NCI-H1299, cellules RAW 264.7
Spécificité de l'espèce: Humain, porc, rat, souris	IF : cellules HeLa,
Espèces citées: Humain, poulet	

Informations générales

Eukaryotic translation initiation factor 4E-binding protein 1(4EBP1), is a member of 4EBPs family, which regulate the translation of a subset of mRNA by competing with eIF4G for binding to eIF4E, thus preventing the assembly of the eIF4F complex. The eIF4F facilitates the recruitment of other translation initiation factors to form the complex and then initiates cap-dependent translation. 4EBP1 also mediates the regulation of protein translation by growth factors, hormones and other stimuli that signal through the MAP kinase and mTORC1 pathways. There are three forms of 4EBP1, alpha, beta and gamma. typical pattern seen on Western blots for phosphorylated heat-acid stabled protein 4EBP1 from rat gastrocnemius muscle. Three distinct bands are noted, with the most rapidly migrating band having an apparent molecular mass of ; 20 kDa and the slowest migrating band of; 24 kDa. The 3 bands are designated by convention as alpha, beta and gamma. (PMID: 10913029)

Publications notables

Autrice	Pubmed ID	Journal	Application
Cefan Zhou	32972302	Autophagy	WB
Minfen Zhang	34520393	Aging (Albany NY)	WB
Hai-Feng Wang	30218751	Gene	WB

Stockage

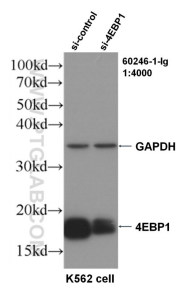
Stockage:
Stocker à -20°C. Stable pendant un an après l'expédition.
Tampon de stockage:
PBS avec azoture de sodium à 0,02 % et glycérol à 50 % pH 7,3
L'aliquotage n'est pas nécessaire pour le stockage à -20C

*** Les 20ul contiennent 0,1% de BSA.

For technical support and original validation data for this product please contact:
T: 1 (888) 4PTGLAB (1-888-478-4522) (toll free in USA), or 1(312) 455-8498 (outside USA)
E: proteintech@ptglab.com
W: ptglab.com

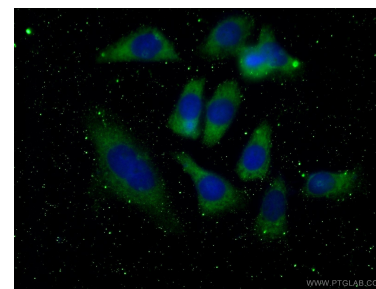
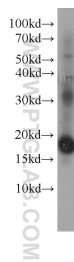
This product is exclusively available under Proteintech Group brand and is not available to purchase from any other manufacturer.

Données de validation sélectionnées



WB result of 4EBP1 antibody (60246-1-Ig, 1:4000) with si-Control and si-4EBP1 transfected K562 cells.

K-562 cells were subjected to SDS PAGE followed by western blot with 60246-1-Ig (4EBP1 antibody) at dilution of 1:2000 incubated at room temperature for 1.5 hours.



Immunofluorescent analysis of (-20°C Ethanol) fixed HeLa cells using 60246-1-Ig(4EBP1 antibody) at dilution of 1:100 and Alexa Fluor 488-conjugated AffiniPure Goat Anti-Mouse IgG(H+L).