

À des fins de recherche uniquement

Anticorps Monoclonal anti-Cytokeratin 15



Numéro de catalogue: 60247-1-Ig

1 Publications

Informations de base

Numéro de catalogue: 60247-1-Ig	Numéro d'acquisition GenBank: BC002641	Méthode de purification: Purification par protéine A
Taille: 150ul, Concentration: 1629 µg/ml by Nanodrop and 1000 µg/ml by Bradford method using BSA as the standard;	Identification du gène (NCBI): 3866	CloneNo.: 6B4F8
Hôte: Mouse	Nom complet: keratin 15	Dilutions recommandées: WB 1:500-1:2000 IHC 1:100-1:1000 IF 1:10-1:100
Isotype: IgG1	MW calculé: 49 kDa	
Immunogen Catalog Number: AG0185	MW observés: 49 kDa	

Applications

Applications testées:
FC, IF, IHC, WB, ELISA

Demandes citées:
IF

Spécificité de l'espèce:
Humain, souris

Contrôles positifs:

WB : cellules A431,

IHC : tissu de cancer de l'oesophage humain, tissu de cancer de la peau humain

IF : cellules HeLa,

Remarque-IHC: il est suggéré de démasquer l'antigène avec un tampon de TE buffer pH 9,0; (*) À défaut, 'le démasquage de l'antigène peut être 'effectué avec un tampon citrate pH 6,0.

Informations générales

Keratins are a large family of proteins that form the intermediate filament cytoskeleton of epithelial cells. Keratin expression is highly regulated, tissue specific, and varies according to cell-state. Type I keratins consist of acidic, low molecular weight proteins with MW ranging from 40 kDa (KRT19) to 64 kDa (KRT9). Type 2 keratins consist of basic or neutral, high molecular weight proteins with MW from 52 kDa (KRT8) to 67 kDa (KRT18). Keratin 15 is a type I cytokeratin. It is found in some progenitor basal cells within complex epithelia.

Publications notables

Autrice	Pubmed ID	Journal	Application
Jiali Li	36388171	Oxid Med Cell Longev	IF

Stockage

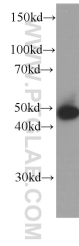
Stockage:
Stocker à -20°C. Stable pendant un an après l'expédition.
Tampon de stockage:
PBS avec azoture de sodium à 0,02 % et glycérol à 50 % pH 7,3
L'aliquotage n'est pas nécessaire pour le stockage à -20C

*** Les 20ul contiennent 0,1% de BSA.

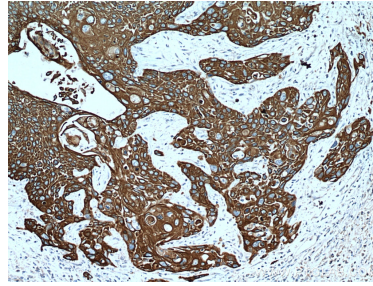
For technical support and original validation data for this product please contact:
T: 1 (888) 4PTGLAB (1-888-478-4522) (toll free in USA), or 1(312) 455-8498 (outside USA)
E: proteintech@ptglab.com
W: ptglab.com

This product is exclusively available under Proteintech Group brand and is not available to purchase from any other manufacturer.

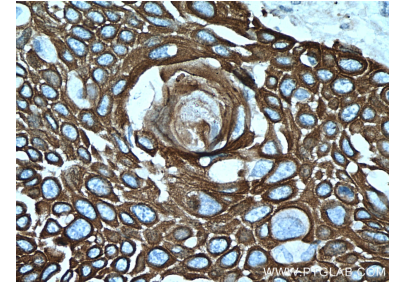
Données de validation sélectionnées



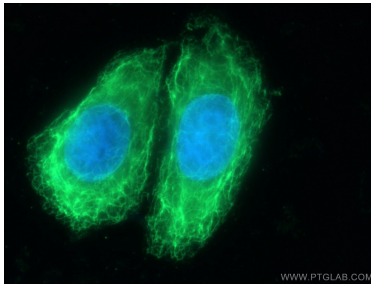
A431 cells were subjected to SDS PAGE followed by western blot with 60247-1-Ig (Cytokeratin 15 antibody) at dilution of 1:1000 incubated at room temperature for 1.5 hours.



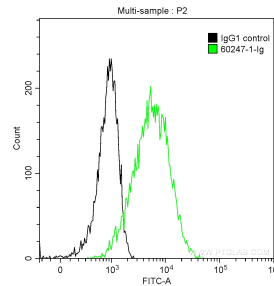
Immunohistochemical analysis of paraffin-embedded human oesophagus cancer tissue slide using 60247-1-Ig (Cytokeratin 15 antibody) at dilution of 1:500 (under 10x lens).



Immunohistochemical analysis of paraffin-embedded human oesophagus cancer tissue slide using 60247-1-Ig (Cytokeratin 15 antibody) at dilution of 1:500 (under 40x lens).



Immunofluorescent analysis of (-20°C Ethanol) fixed HeLa cells using Cytokeratin 15 antibody (60247-1-Ig, Clone: 6B4F8) at dilution of 1:25 and CoraLite488-Conjugated AffiniPure Goat Anti-Mouse IgG(H+L).



1×10^6 A431 cells were intracellularly stained with 0.2 ug Anti-Human Cytokeratin 15 (60247-1-Ig, Clone:6B4F8) and CoraLite@488-Conjugated AffiniPure Goat Anti-Mouse IgG(H+L) at dilution 1:1000 (green), and 0.2 ug Control Antibody. Cells were fixed with 90% MeOH.