

À des fins de recherche uniquement

Anticorps Monoclonal anti-PGRMC2



Numéro de catalogue: 60249-1-Ig

Phare

2 Publications

Informations de base

Numéro de catalogue: 60249-1-Ig	Numéro d'acquisition GenBank: BC016692	Méthode de purification: Purification par protéine A
Taille: 150ul, Concentration: 3300 µg/ml by Nanodrop and 1500 µg/ml by Bradford method using BSA as the standard;	Identification du gène (NCBI): 10424	CloneNo.: 5F10D7
Hôte: Mouse	Nom complet: progesterone receptor membrane component 2	Dilutions recommandées: WB 1:2000-1:10000 IHC 1:50-1:500 IF 1:200-1:800
Isotype: IgG2a	MW calculé: 223 aa, 24 kDa	
Immunogen Catalog Number: AG20077	MW observés: 24+28 kDa	

Applications

Applications testées:

IF, IHC, WB, ELISA

Demandes citées:

WB

Spécificité de l'espèce:

Humain, porc

Espèces citées:

Humain

Remarque-IHC: il est suggéré de démasquer l'antigène avec un tampon de TE buffer pH 9,0; (*) A défaut, 'le démasquage de l'antigène peut être effectué avec un tampon citrate pH 6,0.

Contrôles positifs:

WB : cellules A549, cellules HeLa, cellules HepG2, cellules LNCaP, cellules MCF-7, cellules MDA-MB-231, tissu hépatique de porc

IHC : tissu de cancer du col de l'utérus humain,

IF : tissu de cancer du col de l'utérus humain,

Informations générales

Membrane-associated progesterone receptor component 2 (PGRMC2), also known as DG6 or PMBP, belongs to the cytochrome b5 family. This protein might play a role in cancer. The gene of PGRMC2 maps to chromosome 4q26, and encodes a 223-amino acid single-pass membrane protein with a cytochrome b5 heme-binding domain in its cytoplasmic domain. PGRMC2 has a calculated molecular weight of 24 kDa. The band of about 28 kDa detected by this monoclonal antibody is unknown but may represent phosphorylated form of PGRMC2 (PMID: 28104494).

Publications notables

Autrice	Pubmed ID	Journal	Application
Xiaojuan Ye	26884854	Int J Clin Exp Pathol	WB
Lihua Wang-Eckhardt	32924377	Biol Chem	WB

Stockage

Stockage:

Stocker à -20°C. Stable pendant un an après l'expédition.

Tampon de stockage:

PBS avec azoture de sodium à 0,02 % et glycérol à 50 % pH 7,3

L'aliquotage n'est pas nécessaire pour le stockage à -20C

*** Les 20ul contiennent 0,1% de BSA.

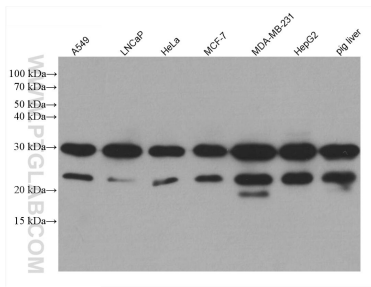
For technical support and original validation data for this product please contact:

T: 1 (888) 4PTGLAB (1-888-478-4522) (toll free in USA), or 1(312) 455-8498 (outside USA)

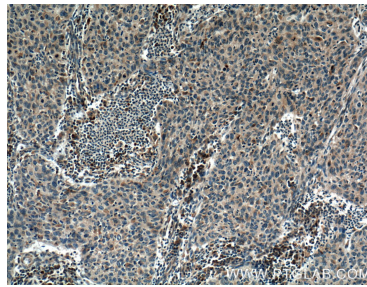
E: proteintech@ptglab.com
W: ptglab.com

This product is exclusively available under Proteintech Group brand and is not available to purchase from any other manufacturer.

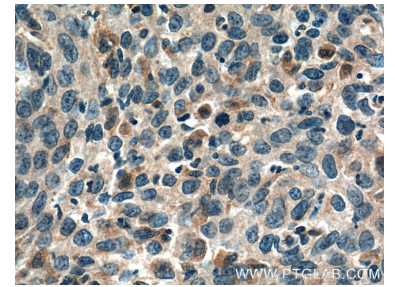
Données de validation sélectionnées



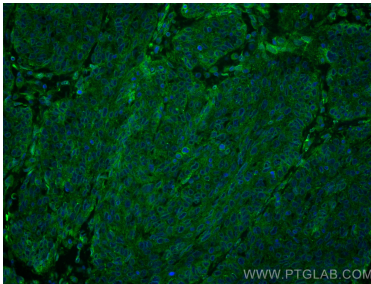
Various lysates were subjected to SDS PAGE followed by western blot with 60249-1-Ig (PGRMC2 antibody) at dilution of 1:5000 incubated at room temperature for 1.5 hours.



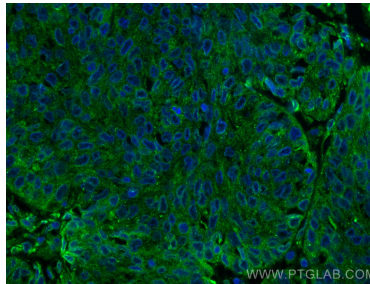
Immunohistochemical analysis of paraffin-embedded human cervical cancer tissue slide using 60249-1-Ig (PGRMC2 Antibody) at dilution of 1:400 (under 10x lens). Heat mediated antigen retrieval with Tris-EDTA buffer (pH 9.0).



Immunohistochemical analysis of paraffin-embedded human cervical cancer tissue slide using 60249-1-Ig (PGRMC2 Antibody) at dilution of 1:400 (under 40x lens). Heat mediated antigen retrieval with Tris-EDTA buffer (pH 9.0).



Immunofluorescent analysis of (4% PFA) fixed human cervical cancer tissue using PGRMC2 antibody (60249-1-Ig, Clone: 5F10D7) at dilution of 1:400 and CoraLite®488-Conjugated AffiniPure Goat Anti-Mouse IgG(H+L).



Immunofluorescent analysis of (4% PFA) fixed human cervical cancer tissue using PGRMC2 antibody (60249-1-Ig, Clone: 5F10D7) at dilution of 1:400 and CoraLite®488-Conjugated AffiniPure Goat Anti-Mouse IgG(H+L).