

À des fins de recherche uniquement

# Anticorps Monoclonal anti-HADHA

Numéro de catalogue: 60250-1-Ig

Phare

5 Publications



## Informations de base

<b>Numéro de catalogue:</b> 60250-1-Ig	<b>Numéro d'acquisition GenBank:</b> BC009235	<b>Méthode de purification:</b> Purification par protéine G
<b>Taille:</b> 150ul , Concentration: 1400 µg/ml by Nanodrop and 1000 µg/ml by Bradford method using BSA as the standard;	<b>Identification du gène (NCBI):</b> 3030	<b>CloneNo.:</b> 3E9B1
<b>Hôte:</b> Mouse	<b>Nom complet:</b> hydroxyacyl-Coenzyme A dehydrogenase/3-ketoacyl-Coenzyme A thiolase/enoyl-Coenzyme A hydratase (trifunctional protein), alpha subunit	<b>Dilutions recommandées:</b> WB 1:500-1:2000 IHC 1:20-1:200 IF 1:50-1:500
<b>Isotype:</b> IgG1	<b>MW calculé:</b> 83 kDa	
<b>Immunogen Catalog Number:</b> AG1211	<b>MW observés:</b> 79 kDa	

## Applications

### Applications testées:

IF, IHC, WB, ELISA

### Demandes citées:

WB

### Spécificité de l'espèce:

Humain, souris

### Espèces citées:

Humain, souris

### Contrôles positifs:

WB : cellules A375, cellules HEK293

IHC : tissu cardiaque humain, tissu hépatique humain

IF : cellules HepG2,

**Remarque-IHC: il est suggéré de démasquer l'antigène avec un tampon de TE buffer pH 9,0; (\*) À défaut, 'le démasquage de l'antigène peut être 'effectué avec un tampon citrate pH 6,0.**

## Informations générales

HADHA (Trifunctional enzyme subunit alpha, mitochondrial) is also named as HADH, 78 kDa gastrin-binding protein. It belongs to the enoyl-CoA hydratase/isomerase family in the N-terminal section and the 3-hydroxyacyl-CoA dehydrogenase family in the central section. It harbors the 3-hydroxyacyl-CoA dehydrogenase and enoyl-CoA hydratase activities. Defects in HADHA are a cause of trifunctional protein deficiency (TFP deficiency) and long-chain 3-hydroxy-CoA dehydrogenase deficiency (LCHAD deficiency) and maternal acute fatty liver of pregnancy (AFLP).

## Publications notables

Autrice	Pubmed ID	Journal	Application
Muna Al-Habsi	36302005	Science	WB
Xiaomei Zhu	35517767	RSC Adv	WB
Yanwei Du	25044461	Proteomics	WB

## Stockage

### Stockage:

Stocker à -20°C. Stable pendant un an après l'expédition.

### Tampon de stockage:

PBS avec azoture de sodium à 0,02 % et glycérol à 50 % pH 7,3

L'aliquotage n'est pas nécessaire pour le stockage à -20C

\*\*\* Les 20ul contiennent 0,1% de BSA.

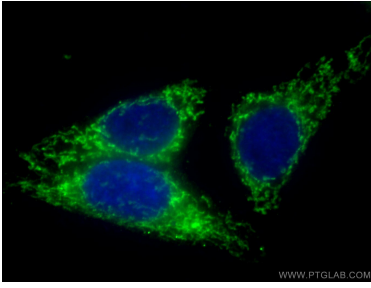
For technical support and original validation data for this product please contact:

T: 1 (888) 4PTGLAB (1-888-478-4522) (toll free in USA), or 1(312) 455-8498 (outside USA)

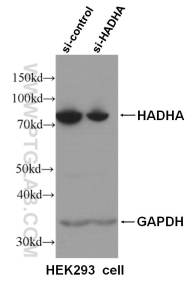
E: proteintech@ptglab.com  
W: ptglab.com

This product is exclusively available under Proteintech Group brand and is not available to purchase from any other manufacturer.

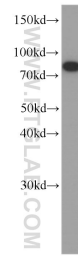
## Données de validation sélectionnées



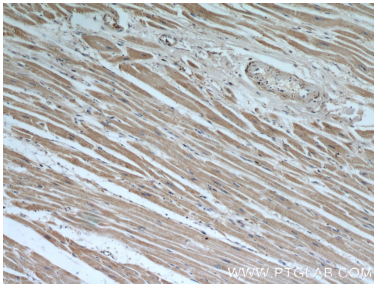
Immunofluorescent analysis of (4% PFA) fixed HepG2 cells using 60250-1-Ig (HADHA antibody) at dilution of 1:100 and CoraLite488-Conjugated AffiniPure Goat Anti-Mouse IgG(H+L).



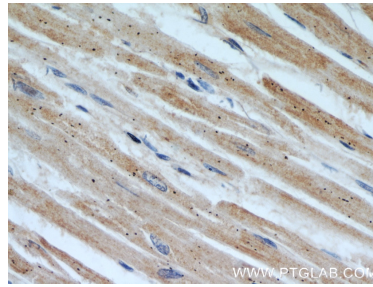
WB result of HADHA specific antibody (60250-1-Ig, 1:4000) with si-control and si-HADHA transfected HEK293 cells.



A375 cells were subjected to SDS PAGE followed by western blot with 60250-1-Ig (HADHA antibody) at dilution of 1:1000 incubated at room temperature for 1.5 hours.



Immunohistochemical analysis of paraffin-embedded human heart using 60250-1-Ig(HADHA antibody) at dilution of 1:50 (under 10x lens).



Immunohistochemical analysis of paraffin-embedded human heart using 60250-1-Ig(HADHA antibody) at dilution of 1:50 (under 40x lens).