

À des fins de recherche uniquement

Anticorps Monoclonal anti-IL-1R2

Numéro de catalogue: 60262-1-Ig **2 Publications**



Informations de base

Numéro de catalogue: 60262-1-Ig	Numéro d'acquisition GenBank: BC039031	Méthode de purification: Purification par protéine A
Taille: 150ul , Concentration: 3200 µg/ml by Nanodrop and 2000 µg/ml by Bradford method using BSA as the standard;	Identification du gène (NCBI): 7850	CloneNo.: 3H4H4
Hôte: Mouse	Nom complet: interleukin 1 receptor, type II	Dilutions recommandées: WB 1:500-1:2000 IF 1:20-1:200
Isotype: IgG2a	MW calculé: 398 aa, 45 kDa	
Immunogen Catalog Number: AG4495	MW observés: 45 kDa	

Applications

Applications testées: IF, WB, ELISA	Contrôles positifs: WB : cellules HeLa, IF : cellules HeLa,
Demandes citées: IF, WB	
Spécificité de l'espèce: Humain, souris	
Espèces citées: rat, souris	

Informations générales

Interleukin-1 receptor type 2 (IL1R2, also known as CD121b) is a cytokine receptor that belongs to the interleukin 1 receptor family. It exists in both a membrane bound and soluble form. IL1R2 binds interleukin alpha (IL1A), interleukin beta (IL1B), and interleukin 1 receptor, type I (IL1R1/IL1RA), and acts as a decoy receptor that inhibits the activity of its ligands. IL1R2 serves as a negative regulator of IL-1 signaling, thereby suppressing inflammatory response.

Publications notables

Autrice	Pubmed ID	Journal	Application
Jingzhe Wang	37273799	Mater Today Bio	WB
Meng-Bing Chen	36806583	Biochem Pharmacol	IF, WB

Stockage

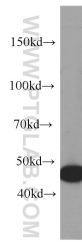
Stockage:
Stocker à -20°C. Stable pendant un an après l'expédition.
Tampon de stockage:
PBS avec azoture de sodium à 0,02 % et glycérol à 50 % pH 7,3
L'aliquotage n'est pas nécessaire pour le stockage à -20C

*** Les 20ul contiennent 0,1% de BSA.

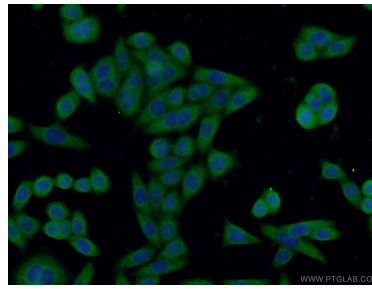
For technical support and original validation data for this product please contact:
T: 1 (888) 4PTGLAB (1-888-478-4522) (toll free in USA), or 1(312) 455-8498 (outside USA)
E: proteintech@ptglab.com
W: ptglab.com

This product is exclusively available under Proteintech Group brand and is not available to purchase from any other manufacturer.

Données de validation sélectionnées



HeLa cells were subjected to SDS PAGE followed by western blot with 60262-1-Ig (IL1R2 antibody) at dilution of 1:1000 incubated at room temperature for 1.5 hours.



Immunofluorescent analysis of HeLa cells using 60262-1-Ig (IL1R2 antibody) at dilution of 1:50 and Alexa Fluor 488-conjugated AffiniPure Goat Anti-Mouse IgG (H+L).