

À des fins de recherche uniquement

Anticorps Monoclonal anti-MEST

Numéro de catalogue: 60263-1-Ig



Informations de base

Numéro de catalogue: 60263-1-Ig	Numéro d'acquisition GenBank: BC011908	Méthode de purification: Purification par protéine A
Taille: 150ul, Concentration: 3000 µg/ml by Nanodrop and 2000 µg/ml by Bradford method using BSA as the standard;	Identification du gène (NCBI): 4232	CloneNo.: 1A4A1
Hôte: Mouse	Nom complet: mesoderm specific transcript homolog (mouse)	Dilutions recommandées: WB 1:500-1:2000 IHC 1:50-1:500 IF 1:50-1:500
Isotype: IgG2a	MW calculé: 38 kDa	
Immunogen Catalog Number: AG11929	MW observés: 34 kDa	

Applications

Applications testées: IF, IHC, WB, ELISA	Contrôles positifs: WB : cellules PC-3, IHC : tissu de cancer de la prostate humain, IF : cellules BxPC-3,
Spécificité de l'espèce: Humain, souris	
Remarque-IHC: il est suggéré de démasquer l'antigène avec un tampon de TE buffer pH 9.0; (*) À défaut, le démasquage de l'antigène peut être effectué avec un tampon citrate pH 6,0.	

Informations générales

MEST (Mesoderm-specific transcript homolog protein) is also named as PEG1 and belongs to the AB hydrolase superfamily. The gene is a imprinting gene, which is associated with growth of mesodermal origin cells (PMID:20339302) and plays important roles in embryo development (PMID:21375506). It is also a novel regulator of Wnt/CTNNB signalling during adipogenic differentiation (PMID:21375506). It has 3 isoforms produced by alternative splicing and the full length protein has a glycosylation site.

Stockage

Stockage:
Stocker à -20°C. Stable pendant un an après l'expédition.
Tampon de stockage:
PBS avec azoture de sodium à 0,02 % et glycérol à 50 % pH 7,3
L'aliquotage n'est pas nécessaire pour le stockage à -20C

*** Les 20ul contiennent 0,1% de BSA.

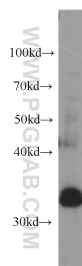
For technical support and original validation data for this product please contact:

T: 1 (888) 4PTGLAB (1-888-478-4522) (toll free
in USA), or 1(312) 455-8498 (outside USA)

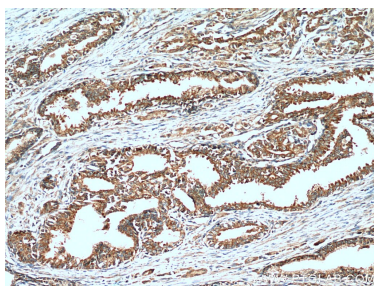
E: proteintech@ptglab.com
W: ptglab.com

This product is exclusively available under Proteintech Group brand and is not available to purchase from any other manufacturer.

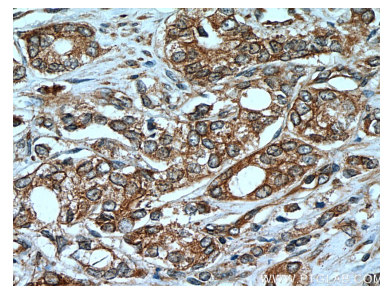
Données de validation sélectionnées



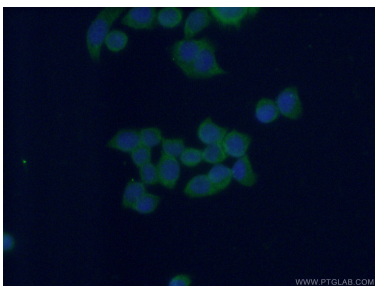
PC-3 cells were subjected to SDS PAGE followed by western blot with 60263-1-Ig (MEST antibody) at dilution of 1:1000 incubated at room temperature for 1.5 hours.



Immunohistochemical analysis of paraffin-embedded human prostate cancer tissue slide using 60263-1-Ig (MEST Antibody) at dilution of 1:400 (under 10x lens).



Immunohistochemical analysis of paraffin-embedded human prostate cancer tissue slide using 60263-1-Ig (MEST Antibody) at dilution of 1:400 (under 40x lens).



Immunofluorescent analysis of (-20°C Ethanol) fixed BxPC-3 cells using 60263-1-Ig(MEST antibody) at dilution of 1:100 and Alexa Fluor 488-conjugated AffiniPure Goat Anti-Mouse IgG(H+L).