

À des fins de recherche uniquement

Anticorps Monoclonal anti-CCT3

Numéro de catalogue: 60264-1-Ig **1 Publications**



Informations de base

Numéro de catalogue: 60264-1-Ig	Numéro d'acquisition GenBank: BC006501	Méthode de purification: Purification par protéine A
Taille: 150ul , Concentration: 1800 µg/ml by Nanodrop and 847 µg/ml by Bradford method using BSA as the standard;	Identification du gène (NCBI): 7203	CloneNo.: 5F5A6
Hôte: Mouse	Nom complet: chaperonin containing TCP1, subunit 3 (gamma)	Dilutions recommandées: WB 1:500-1:2000 IF 1:20-1:200
Isotype: IgG2b	MW calculé 60 kDa	
Immunogen Catalog Number: AG0843	MW observés: 56-60 kDa	

Applications

Applications testées: FC, IF, WB, ELISA	Contrôles positifs: WB : cellules COLO 320, IF : cellules HepG2,
Demandes citées: CoIP, IF, WB	
Spécificité de l'espèce: Humain, souris	
Espèces citées: Humain, souris	

Informations générales

Publications notables

Autrice	Pubmed ID	Journal	Application
Joshua Linnert	37427378	Front Cell Dev Biol	WB,IF,CoIP

Stockage

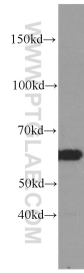
Stockage:
Stocker à -20°C. Stable pendant un an après l'expédition.
Tampon de stockage:
PBS avec azoture de sodium à 0,02 % et glycérol à 50 % pH 7,3
L'aliquotage n'est pas nécessaire pour le stockage à -20C

***** Les 20ul contiennent 0,1% de BSA.**

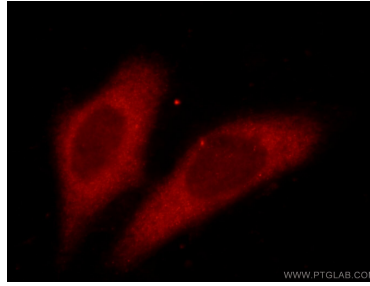
For technical support and original validation data for this product please contact:
T: 1 (888) 4PTGLAB (1-888-478-4522) (toll free in USA), or 1(312) 455-8498 (outside USA)
E: proteintech@ptglab.com
W: ptglab.com

This product is exclusively available under Proteintech Group brand and is not available to purchase from any other manufacturer.

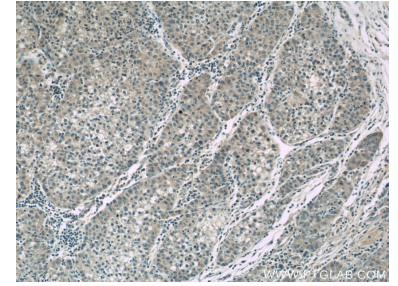
Données de validation sélectionnées



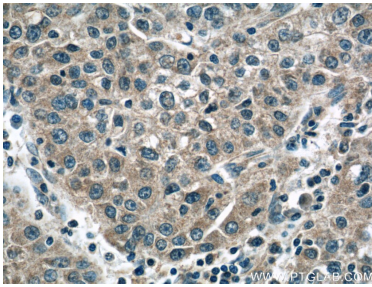
COLO 320 cells were subjected to SDS PAGE followed by western blot with 60264-1-Ig (CCT3 antibody) at dilution of 1:1000 incubated at room temperature for 1.5 hours.



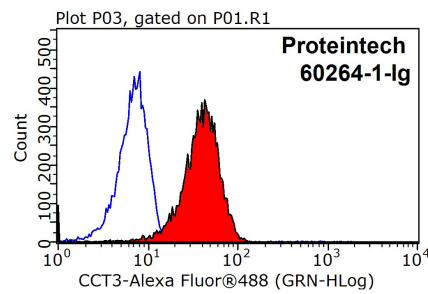
Immunofluorescent analysis of HepG2 cells using 60264-1-Ig (CCT3 Antibody) at dilution of 1:50 and Rhodamine-labeled goat anti-mouse IgG (red).



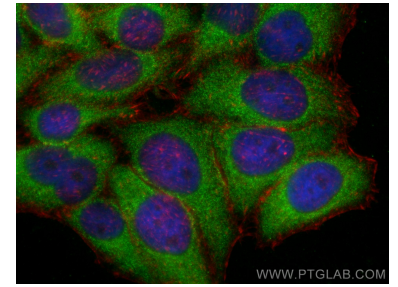
Immunohistochemical analysis of paraffin-embedded human liver cancer tissue slide using 60264-1-Ig (CCT3 Antibody) at dilution of 1:50.



Immunohistochemical analysis of paraffin-embedded human liver cancer tissue slide using 60264-1-Ig (CCT3 Antibody) at dilution of 1:50.



1X10⁶ HepG2 cells were stained with 0.2ug CCT3 antibody (60264-1-Ig, red) and control antibody (blue). Fixed with 90% MeOH blocked with 3% BSA (30 min). Alexa Fluor 488-conjugated AffiniPure Goat Anti-Mouse IgG(H+L) with dilution 1:1000.



Immunofluorescent analysis of (-20°C Ethanol) fixed HepG2 cells using CCT3 antibody (60264-1-Ig, Clone: 5F5A6) at dilution of 1:800 and CoraLite@488-Conjugated AffiniPure Goat Anti-Mouse IgG(H+L), CL594-Phalloidin (red).