

À des fins de recherche uniquement

Anticorps Monoclonal anti-PKM2-specific



Numéro de catalogue: 60268-1-Ig

Phare

33 Publications

Informations de base

Numéro de catalogue:

60268-1-Ig

Numéro d'acquisition GenBank:

NM_002654

Méthode de purification:

Purification par protéine G

Taille:

150ul, Concentration: 1000 µg/ml by Nanodrop and 585 µg/ml by Bradford method using BSA as the standard;

Identification du gène (NCBI):

5315

CloneNo.:

1C11C7

Hôte:

Mouse

Nom complet:

PKM pyruvate kinase, muscle

Dilutions recommandées:

WB 1:5000-1:30000

IP 0.5-4.0 ug for IP and 1:200-1:1000 for WB

Isotype:

IgG1

MW calculé

58 kDa

IHC 1:100-1:1000

IF 1:200-1:800

MW observés:

58 kDa

Applications

Applications testées:

FC, IF, IHC, IP, WB, ELISA

Demandes citées:

CoIP, ICC, IF, IHC, IP, WB

Spécificité de l'espèce:

Humain, rat, souris

Espèces citées:

Humain, rat, souris

Contrôles positifs:

WB : cellules HEK-293, cellules 4T1, cellules C6, cellules HepG2, cellules HSC-T6, cellules K-562, cellules MCF-7, cellules NIH/3T3, cellules ROS1728, tissu cérébral de rat, tissu cérébral humain

IP : cellules HeLa,

IHC : tissu de cancer du côlon humain,

IF : cellules HeLa, cellules HepG2

Remarque-IHC: il est suggéré de démasquer l'antigène avec un tampon de TE buffer pH 9,0; (*) À défaut, le démasquage de l'antigène peut être effectué avec un tampon citrate pH 6,0.

Informations générales

PKM, also named as OIP3, PK2, PK3, PKM, p58, THBP1, CTHBP and Tumor M2-PK, belongs to the pyruvate kinase family. It is glycolytic enzyme that catalyzes the transfer of a phosphoryl group from phosphoenolpyruvate (PEP) to ADP, generating ATP. It stimulates POU5F1-mediated transcriptional activation. PKM plays a general role in caspase independent cell death of tumor cells. PKM has 2 isoforms, the activity of the M2 isoform can be inhibited by tyrosine kinase signalling in tumour cells. The immunogen of this antibody is M2 isoform and this antibody is specific to PKM2 isoform.

Publications notables

Autrice	Pubmed ID	Journal	Application
Teresa W-M Fan	36150727	J Immunol	
Bin Zhang	31500508	Autophagy	WB
Yubo Zhao	36064939	Cell Death Dis	WB

Stockage

Stockage:

Stocker à -20°C. Stable pendant un an après l'expédition.

Tampon de stockage:

PBS avec azoture de sodium à 0,02 % et glycérol à 50 % pH 7,3

L'aliquotage n'est pas nécessaire pour le stockage à -20C

*** Les 20ul contiennent 0,1% de BSA.

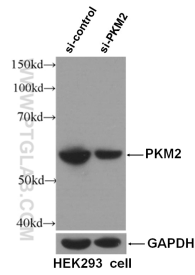
For technical support and original validation data for this product please contact:

T: 1 (888) 4PTGLAB (1-888-478-4522) (toll free in USA), or 1(312) 455-8498 (outside USA)

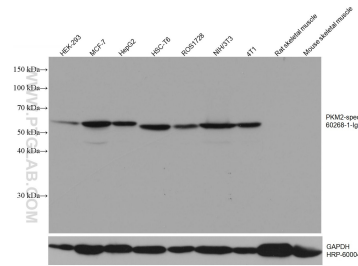
E: proteintech@ptglab.com
W: ptglab.com

This product is exclusively available under Proteintech Group brand and is not available to purchase from any other manufacturer.

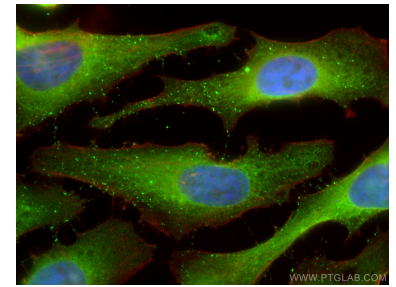
Données de validation sélectionnées



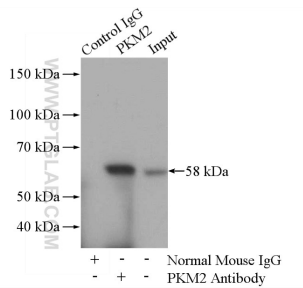
WB result of PKM2 antibody (60268-1-Ig, 1:3000) with si-Control and si-PKM2 transfected HEK293 cells.



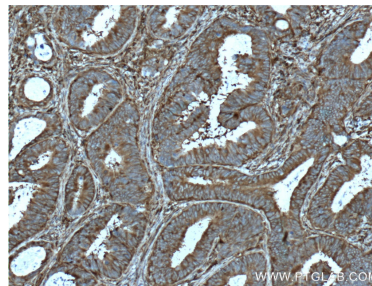
Various lysates were subjected to SDS PAGE followed by western blot with 60268-1-Ig (PKM2-specific antibody) at dilution of 1:20000 incubated at room temperature for 1.5 hours. The membrane was stripped and reblotted with HRP-conjugated GAPDH Monoclonal antibody (HRP-60004) as loading control.



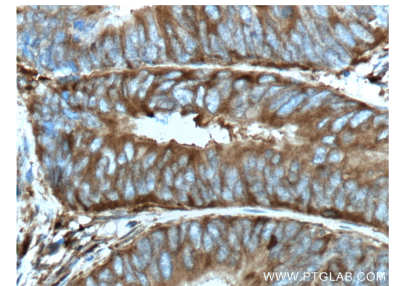
Immunofluorescent analysis of (4% PFA) fixed HeLa cells using PKM2-specific antibody (60268-1-Ig, Clone: 1C11C7) at dilution of 1:400 and CoraLite@488-Conjugated AffiniPure Goat Anti-Mouse IgG(H+L), CL594-Phalloidin (red).



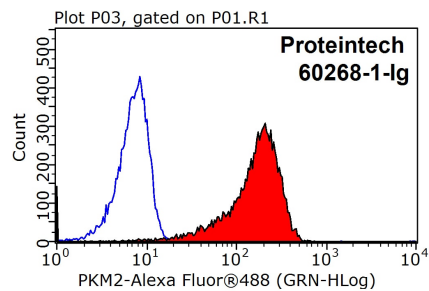
IP Result of anti-PKM2-specific (IP:60268-1-Ig, 5ug; Detection:15822-1-AP (PKM2-specific rabbit polyclonal antibody), 1:300) with HeLa cells lysate 2800ug.



Immunohistochemical analysis of paraffin-embedded human colon cancer tissue slide using 60268-1-Ig (PKM2-specific antibody at dilution of 1:500 (under 10x lens). Heat mediated antigen retrieval with Tris-EDTA buffer (pH 9.0).



Immunohistochemical analysis of paraffin-embedded human colon cancer tissue slide using 60268-1-Ig (PKM2-specific antibody at dilution of 1:500 (under 40x lens). Heat mediated antigen retrieval with Tris-EDTA buffer (pH 9.0).



1X10⁶ HepG2 cells were stained with .2ug PKM2-specific antibody (60268-1-Ig, red) and control antibody (blue). Fixed with 90% MeOH blocked with 3% BSA (30 min). Alexa Fluor 488-conjugated AffiniPure Goat Anti-Mouse IgG(H+L) with dilution 1:1000.