

À des fins de recherche uniquement

# Anticorps Monoclonal anti-SECTM1

Numéro de catalogue: 60281-1-Ig **1 Publications**



## Informations de base

<b>Numéro de catalogue:</b> 60281-1-Ig	<b>Numéro d'acquisition GenBank:</b> BC017716	<b>Méthode de purification:</b> Chromatographie d'affinité thiophilique
<b>Taille:</b> 150ul , Concentration: 833 µg/ml by Bradford method using BSA as the standard;	<b>Identification du gène (NCBI):</b> 6398	<b>CloneNo.:</b> 1C11B4
<b>Hôte:</b> Mouse	<b>Nom complet:</b> secreted and transmembrane 1	<b>Dilutions recommandées:</b> WB 1:1000-1:4000 IHC 1:50-1:500
<b>Isotype:</b> IgM	<b>MW calculé</b> 248 aa, 27 kDa	
<b>Immunogen Catalog Number:</b> AG14645	<b>MW observés:</b> 27 kDa	

## Applications

<b>Applications testées:</b> FC, IHC, WB, ELISA	<b>Contrôles positifs:</b> <b>WB :</b> cellules HaCaT, cellules HeLa, cellules JAR, cellules K-562, cellules LNCaP, cellules NCCIT, cellules PC-3
<b>Demandes citées:</b> IHC, WB	<b>IHC :</b> tissu de cancer du sein humain, tissu de cancer du côlon humain
<b>Spécificité de l'espèce:</b> Humain	
<b>Espèces citées:</b> Humain	
<b>Remarque-IHC: il est suggéré de démasquer l'antigène avec un tampon de TE buffer pH 9,0; (*) A défaut, 'le démasquage de l'antigène peut être 'effectué avec un tampon citrate pH 6,0.</b>	

## Informations générales

SECTM1, also named as protein K12, is originally identified by its location just upstream of the CD7 locus. It has been proposed as a ligand for CD7. SECTM1 is involved in thymocyte signaling. This antibody is specific to SECTM1.

## Publications notables

Autrice	Pubmed ID	Journal	Application
Jie Mei	36818292	iScience	WB,IHC

## Stockage

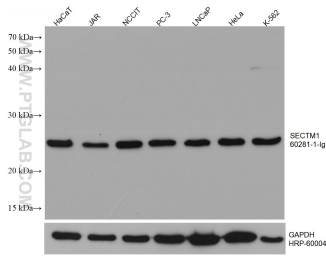
**Stockage:**  
Stocker à -20°C. Stable pendant un an après l'expédition.  
**Tampon de stockage:**  
PBS avec azoture de sodium à 0,02 % et glycérol à 50 % pH 7,3  
L'aliquotage n'est pas nécessaire pour le stockage à -20C

\*\*\* Les 20ul contiennent 0,1% de BSA.

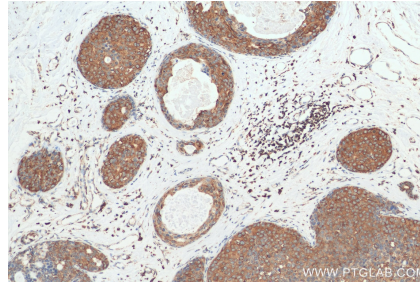
For technical support and original validation data for this product please contact:  
T: 1 (888) 4PTGLAB (1-888-478-4522) (toll free in USA), or 1(312) 455-8498 (outside USA)  
E: proteintech@ptglab.com  
W: ptglab.com

This product is exclusively available under Proteintech Group brand and is not available to purchase from any other manufacturer.

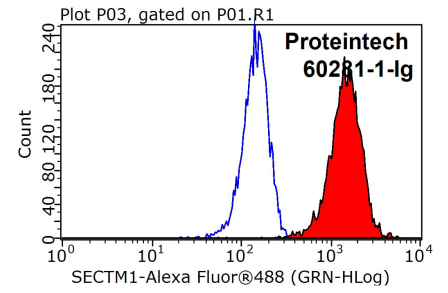
## Données de validation sélectionnées



Various lysates were subjected to SDS PAGE followed by western blot with 60281-1-Ig (SECTM1 antibody) at dilution of 1:2000 incubated at room temperature for 1.5 hours. The membrane was stripped and reblotted with HRP-conjugated GAPDH Monoclonal antibody (HRP-60004) as loading control.



Immunohistochemical analysis of paraffin-embedded human breast cancer tissue slide using 60281-1-Ig (SECTM1 antibody) at dilution of 1:200 (under 10x lens). Heat mediated antigen retrieval with Tris-EDTA buffer (pH 9.0).



1X10<sup>6</sup> K-562 cells were stained with 0.2ug SECTM1 antibody (60281-1-Ig, red) and control antibody (blue). Fixed with 90% MeOH blocked with 3% BSA (30 min). Alexa Fluor 488-conjugated AffiniPure Goat Anti-Mouse IgG(H+L) with dilution 1:1000.