

À des fins de recherche uniquement

Anticorps Monoclonal anti-FAM3C

Numéro de catalogue: 60282-1-Ig



Informations de base

Numéro de catalogue:	60282-1-Ig	Numéro d'acquisition GenBank:	BC046932	Méthode de purification:	Purification par protéine A
Taille:	150ul , Concentration: 1000 µg/ml by Nanodrop and 620 µg/ml by Bradford method using BSA as the standard;	Identification du gène (NCBI):	10447	CloneNo.:	2E10D5
Hôte:	Mouse	Nom complet:	family with sequence similarity 3, member C	Dilutions recommandées:	WB 1:500-1:2000 IHC 1:50-1:500 IF 1:50-1:500
Isotype:	IgG1	MW calculé	25 kDa		
Immunogen Catalog Number:	AG5516	MW observés:	25 kDa		

Applications

Applications testées:

IF, IHC, WB, ELISA

Spécificité de l'espèce:

Humain

Remarque-IHC: il est suggéré de démasquer l'antigène avec un tampon de TE buffer pH 9.0; (*) À défaut, le démasquage de l'antigène peut être effectué avec un tampon citrate pH 6,0.

Contrôles positifs:

WB : tissu cérébral humain fœtal,

IHC : tissu de cancer de l'œsophage humain,

IF : cellules HepG2,

Informations générales

FAM3C, also known as ILEI, is a secreted protein belonging to the cytokine-like protein family. FAM3C is a signaling cytokine with a GG domain, hydrophobic leader sequence and an N-terminal signal peptide. A change in expression of this protein has been noted in pancreatic cancer-derived cells. FAM3C has been involved in the epithelial to mesenchymal transition, and retinal laminar formation processes in vertebrates. Also, FAM3C may play an important role in inner ear development and thus be involved in cell differentiation and proliferation during inner ear embryogenesis.

Stockage

Stockage:

Stocker à -20°C. Stable pendant un an après l'expédition.

Tampon de stockage:

PBS avec azoture de sodium à 0,02 % et glycérol à 50 % pH 7,3

L'aliquotage n'est pas nécessaire pour le stockage à -20C

*** Les 20ul contiennent 0,1% de BSA.

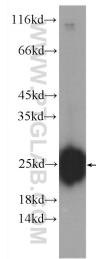
For technical support and original validation data for this product please contact:

T: 1 (888) 4PTGLAB (1-888-478-4522) (toll free in USA), or 1(312) 455-8498 (outside USA)

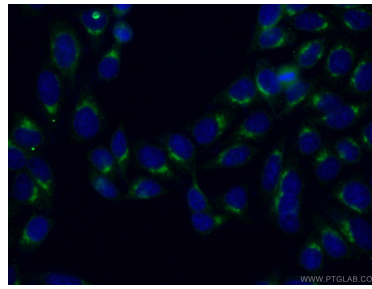
E: proteintech@ptglab.com
W: ptglab.com

This product is exclusively available under Proteintech Group brand and is not available to purchase from any other manufacturer.

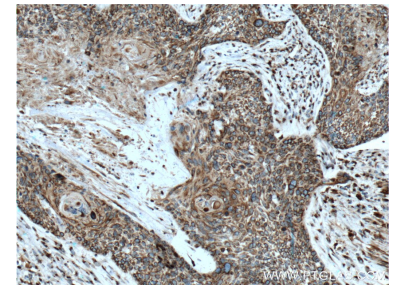
Données de validation sélectionnées



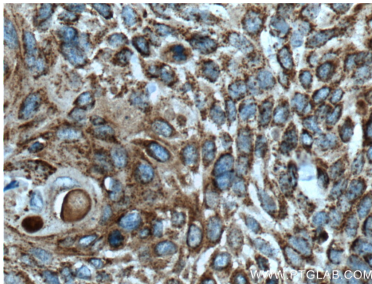
fetal human brain tissue were subjected to SDS PAGE followed by western blot with 60282-1-Ig (FAM3C Antibody) at dilution of 1:1000 incubated at room temperature for 1.5 hours.



Immunofluorescent analysis of (-20°C Ethanol) fixed HepG2 cells using 60282-1-Ig (FAM3C antibody) at dilution of 1:100 and Alexa Fluor 488-conjugated AffiniPure Goat Anti-Mouse IgG(H+L).



Immunohistochemical analysis of paraffin-embedded human oesophagus cancer tissue slide using 60282-1-Ig (FAM3C Antibody) at dilution of 1:200 (under 10x lens). Heat mediated antigen retrieval with Tris-EDTA buffer (pH 9.0).



Immunohistochemical analysis of paraffin-embedded human oesophagus cancer tissue slide using 60282-1-Ig (FAM3C Antibody) at dilution of 1:200 (under 40x lens). Heat mediated antigen retrieval with Tris-EDTA buffer (pH 9.0).