

À des fins de recherche uniquement

Anticorps Monoclonal anti-PLAP

Numéro de catalogue: 60294-1-Ig

Phare

2 Publications



Informations de base

Numéro de catalogue: 60294-1-Ig	Numéro d'acquisition GenBank: BC009647	Méthode de purification: Purification par protéine G
Taille: 150ul , Concentration: 1700 µg/ml by Nanodrop and 700 µg/ml by Bradford method using BSA as the standard;	Identification du gène (NCBI): 250	CloneNo.: 2B7C9
Hôte: Mouse	Nom complet: alkaline phosphatase, placental (Regan isozyme)	Dilutions recommandées: WB 1:500-1:2000 IHC 1:20-1:200
Isotype: IgG1	MW calculé 58 kDa	
Immunogen Catalog Number: AG13361	MW observés: 66 kDa	

Applications

Applications testées:

FC, IHC, WB, ELISA

Demandes citées:

IF, WB

Spécificité de l'espèce:

Humain

Espèces citées:

rat

Remarque-IHC: il est suggéré de démasquer l'antigène avec un tampon de TE buffer pH 9,0; (*) A défaut, 'le démasquage de l'antigène peut être 'effectué avec un tampon citrate pH 6,0.

Contrôles positifs:

WB : cellules HepG2, HepG2

IHC : tissu placentaire humain,

Informations générales

Placental alkaline phosphatase (PLAP) is a glycosyl phosphatidylinositol (GPI)-anchored sialoglycoprotein, which shows greater resistance to heat inactivation than other alkaline phosphatase. Presented at high levels in placental trophoblasts, PLAP is recognized as an important marker of differentiation in human malignancies.

Publications notables

Autrice	Pubmed ID	Journal	Application
Xin Zhao	33205619	J Cell Mol Med	IF
Situo Wang	36896013	Front Bioeng Biotechnol	WB

Stockage

Stockage:

Stocker à -20°C. Stable pendant un an après l'expédition.

Tampon de stockage:

PBS avec azoture de sodium à 0,02 % et glycérol à 50 % pH 7,3

L'aliquotage n'est pas nécessaire pour le stockage à -20C

*** Les 20ul contiennent 0,1% de BSA.

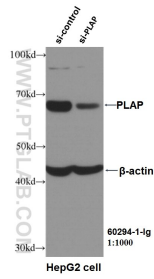
For technical support and original validation data for this product please contact:

T: 1 (888) 4PTGLAB (1-888-478-4522) (toll free
in USA), or 1(312) 455-8498 (outside USA)

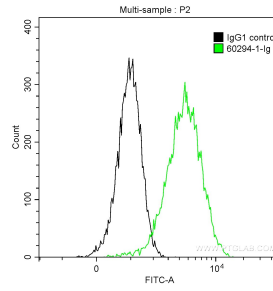
E: proteintech@ptglab.com
W: ptglab.com

This product is exclusively available under Proteintech Group brand and is not available to purchase from any other manufacturer.

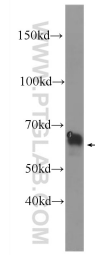
Données de validation sélectionnées



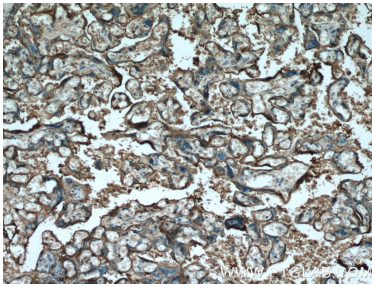
WB result of PLAP antibody (60294-1-Ig, 1:1000) with si-control and si-PLAP transfected HepG2 cells.



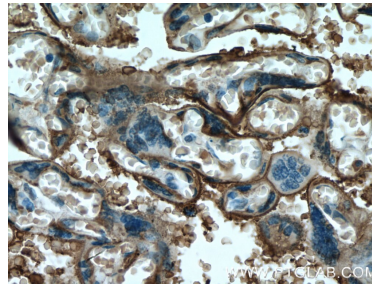
1×10^6 HepG2 cells were intracellularly stained with 0.2 μ g Anti-Human PLAP (60294-1-Ig, Clone:2B7C9) and CoraLite@488-Conjugated AffiniPure Goat Anti-Mouse IgG(H+L) at dilution 1:1000 (green), and 0.2 μ g Mouse IgG1 Isotype Control (66360-1-Ig, Clone: T1F8D3F10) (black). Cells were fixed with 4% PFA and permeabilized with 0.1% TritonX-100.



HepG2 cells were subjected to SDS PAGE followed by western blot with 60294-1-Ig (PLAP antibody at dilution of 1:1000 incubated at room temperature for 1.5 hours).



Immunohistochemical analysis of paraffin-embedded human placenta tissue slide using 60294-1-Ig (PLAP antibody at dilution of 1:100 (under 10x lens).



Immunohistochemical analysis of paraffin-embedded human placenta tissue slide using 60294-1-Ig (PLAP antibody at dilution of 1:100 (under 40x lens).