

À des fins de recherche uniquement

# Anticorps Monoclonal anti-CYP2D6

Numéro de catalogue: 60297-1-Ig



## Informations de base

Numéro de catalogue: 60297-1-Ig	Numéro d'acquisition GenBank: BC075023	Méthode de purification: Purification par protéine A
Taille: 150ul, Concentration: 2500 µg/ml by Nanodrop and 1847 µg/ml by Bradford method using BSA as the standard;	Identification du gène (NCBI): 1565	CloneNo.: 8B11D12
Hôte: Mouse	Nom complet: cytochrome P450, family 2, subfamily D, polypeptide 6	Dilutions recommandées: WB 1:500-1:2000 IHC 1:50-1:500
Isotype: IgG2b	MW calculé 497 aa, 56 kDa	
Immunogen Catalog Number: AG12605	MW observés: 56 kDa	

## Applications

Applications testées:  
IHC, WB, ELISA

Spécificité de l'espèce:  
Humain

Contrôles positifs:

WB : cellules HepG2, tissu cérébral humain fœtal  
IHC : tissu de cancer du foie humain,

**Remarque-IHC: il est suggéré de démasquer l'antigène avec un tampon de TE buffer pH 9.0; (\*) À défaut, le démasquage de l'antigène peut être effectué avec un tampon citrate pH 6,0.**

## Informations générales

CYP2D6 (Cytochrome P450 2D6) is also named as CYP2DL1 and belongs to the cytochrome P450 family. It is a monooxygenase that involved in the metabolism of drugs such as antiarrhythmics, adrenoceptor antagonists, and tricyclic antidepressants. CYP2D6 is responsible for the metabolism of many drugs and environmental chemicals that it oxidizes. It has 2 isoforms produced by alternative splicing with the molecular weight of 56 kDa and 50 kDa.

## Stockage

Stockage:  
Stocker à -20°C. Stable pendant un an après l'expédition.

Tampon de stockage:  
PBS avec azoture de sodium à 0,02 % et glycérol à 50 % pH 7,3

L'aliquotage n'est pas nécessaire pour le stockage à -20C

\*\*\* Les 20ul contiennent 0,1% de BSA.

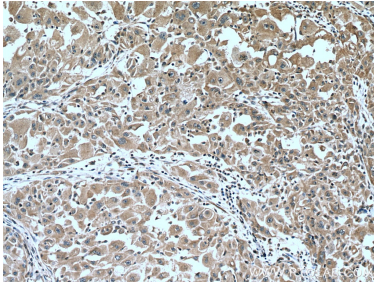
For technical support and original validation data for this product please contact:

T: 1 (888) 4PTGLAB (1-888-478-4522) (toll free  
in USA), or 1(312) 455-8498 (outside USA)

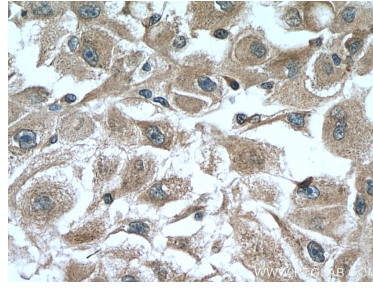
E: [proteintech@ptglab.com](mailto:proteintech@ptglab.com)  
W: [ptglab.com](http://ptglab.com)

This product is exclusively available under Proteintech Group brand and is not available to purchase from any other manufacturer.

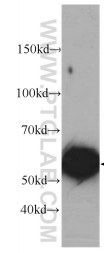
## Données de validation sélectionnées



Immunohistochemical analysis of paraffin-embedded human liver cancer tissue slide using 60297-1-Ig (CYP2D6 antibody) at dilution of 1:200 (under 10x lens). Heat mediated antigen retrieval with Tris-EDTA buffer (pH 9.0).



Immunohistochemical analysis of paraffin-embedded human liver cancer tissue slide using 60297-1-Ig (CYP2D6 antibody) at dilution of 1:200 (under 40x lens). Heat mediated antigen retrieval with Tris-EDTA buffer (pH 9.0).



HepG2 cells were subjected to SDS PAGE followed by western blot with 60297-1-Ig (CYP2D6 Antibody) at dilution of 1:1000 incubated at room temperature for 1.5 hours.