

À des fins de recherche uniquement

Anticorps Monoclonal anti-PTEN

Numéro de catalogue: 60300-1-Ig

Phare

33 Publications



Informations de base

Numéro de catalogue: 60300-1-Ig	Numéro d'acquisition GenBank: BC005821	Méthode de purification: Purification par protéine A
Taille: 150ul, Concentration: 1500 µg/ml by Nanodrop and 1000 µg/ml by Bradford method using BSA as the standard;	Identification du gène (NCBI): 5728	CloneNo.: 5C10B6
Hôte: Mouse	Nom complet: phosphatase and tensin homolog	Dilutions recommandées: WB 1:2000-1:10000 IHC 1:200-1:1200 IF 1:200-1:800
Isotype: IgG2a	MW calculé: 47 kDa	
Immunogen Catalog Number: AG17274	MW observés: 55 kDa	

Applications

Applications testées:

IF, IHC, WB, ELISA

Demandes citées:

IF, IHC, WB

Spécificité de l'espèce:

Humain, souris

Espèces citées:

Humain, souris

Remarque-IHC: il est suggéré de démasquer l'antigène avec un tampon de TE buffer pH 9,0; (*) A défaut, 'le démasquage de l'antigène peut être 'effectué avec un tampon citrate pH 6,0.

Contrôles positifs:

WB : cellules DU 145, cellules HEK-293, cellules HeLa, cellules HepG2, cellules MCF-7, cellules NIH/3T3, tissu cérébral humain foetal

IHC : tissu d'hyperplasie mammaire humain, tissu de cancer de l'endomètre humain, tissu de cancer du poumon humain, tissu de cancer du sein humain, tissu d'hyperplasie de la prostate humaine

IF : cellules HepG2,

Informations générales

PTEN (also designated MMAC1), products of tumor suppressor genes, are found deleted in most human gliomas. The PTEN genes are also mutated in many other tumors, such as brain, breast, kidney and prostate cancers. PTEN is a protein tyrosine phosphatase that may terminate the signaling transduction pathways mediated by PI 3-kinase/Akt. PTEN has an apparent molecular weight of 55 kDa and it is located in the cytosol.

Publications notables

Autrice	Pubmed ID	Journal	Application
Ying Zhang	29074436	Int J Biochem Cell Biol	WB
Ding Jiamin	36083475	J Tradit Chin Med	WB
Li Zeng	35024240	Mol Ther Nucleic Acids	IHC

Stockage

Stockage:

Stocker à -20°C. Stable pendant un an après l'expédition.

Tampon de stockage:

PBS avec azoture de sodium à 0,02 % et glycérol à 50 % pH 7,3

L'aliquotage n'est pas nécessaire pour le stockage à -20C

***** Les 20ul contiennent 0,1% de BSA.**

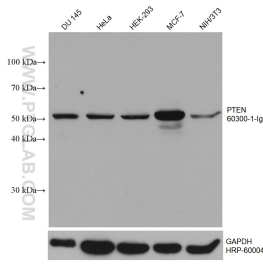
For technical support and original validation data for this product please contact:

T: 1 (888) 4PTGLAB (1-888-478-4522) (toll free in USA), or 1(312) 455-8498 (outside USA)

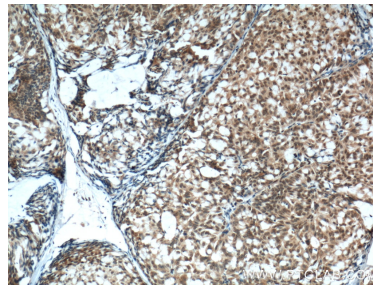
E: proteintech@ptglab.com
W: ptglab.com

This product is exclusively available under Proteintech Group brand and is not available to purchase from any other manufacturer.

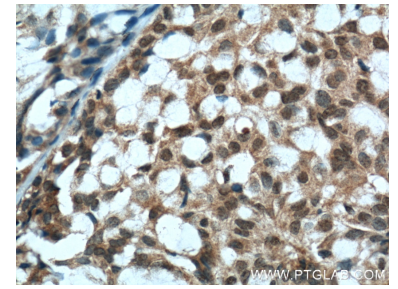
Données de validation sélectionnées



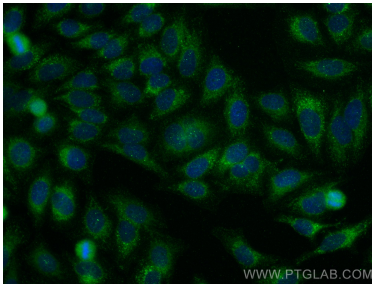
Various lysates were subjected to SDS PAGE followed by western blot with 60300-1-Ig (PTEN antibody) at dilution of 1:5000 incubated at room temperature for 1.5 hours. The membrane was stripped and reblotted with HRP-conjugated GAPDH Monoclonal antibody (HRP-60004) as loading control.



Immunohistochemical analysis of paraffin-embedded human breast hyperplasia tissue slide using 60300-1-Ig (PTEN antibody) at dilution of 1:600 (under 10x lens). Heat mediated antigen retrieval with Tris-EDTA buffer (pH 9.0).



Immunohistochemical analysis of paraffin-embedded human breast hyperplasia tissue slide using 60300-1-Ig (PTEN antibody) at dilution of 1:600 (under 40x lens). Heat mediated antigen retrieval with Tris-EDTA buffer (pH 9.0).



Immunofluorescent analysis of (-20°C Methanol) fixed HepG2 cells using PTEN antibody (60300-1-Ig, Clone: 5C10B6) at dilution of 1:400 and CoraLite@488-Conjugated AffiniPure Goat Anti-Mouse IgG(H+L).