

À des fins de recherche uniquement

Anticorps Monoclonal anti-FOLR1

Numéro de catalogue: 60307-1-Ig

Phare

3 Publications



Informations de base

Numéro de catalogue: 60307-1-Ig	Numéro d'acquisition GenBank: BC002947	Méthode de purification: Purification par protéine A
Taille: 150ul, Concentration: 1600 µg/ml by Nanodrop and 1000 µg/ml by Bradford method using BSA as the standard;	Identification du gène (NCBI): 2348	CloneNo.: 2B4B7
Hôte: Mouse	Nom complet: folate receptor 1 (adult)	Dilutions recommandées: WB 1:1000-1:8000 IHC 1:50-1:500
Isotype: IgG1	MW calculé: 257 aa, 30 kDa	
Immunogen Catalog Number: AG19959	MW observés: 36-38 kDa	

Applications

Applications testées:

IHC, WB, ELISA

Demandes citées:

WB

Spécificité de l'espèce:

Humain

Espèces citées:

Humain

Remarque-IHC: il est suggéré de démasquer l'antigène avec un tampon de TE buffer pH 9,0; (*) A défaut, le démasquage de l'antigène peut être effectué avec un tampon citrate pH 6,0.

Contrôles positifs:

WB : lait humain, cellules HeLa

IHC : tissu rénal humain,

Informations générales

Folate receptor 1 (FOLR1), also known as folate receptor alpha or adult folate-binding protein (FBP), is a 38-kDa glycoprotein belonging to the folate receptor family (PMID:15094207; 23528302). The receptor binds to folate and reduced folic acid derivatives and mediates delivery of 5-methyltetrahydrofolate to the interior of cells. FOLR1 is a secreted protein that either anchors to membranes via a glycosyl-phosphatidylinositol linkage or exists in a soluble form. FOLR1 expression is often limited to the apical surfaces of epithelium in the lung, kidney and choroid plexus but is differentially overexpressed in a variety of solid tumors such as ovarian cancer, non-small cell lung cancer, breast cancer, kidney cancer and high-grade osteosarcoma (PMID: 23528302; 23357463).

Publications notables

Autrice	Pubmed ID	Journal	Application
Yue Pan	35323454	Biosensors (Basel)	WB
Xiangqin Meng	33705663	ACS Nano	WB
Yuki Matsunaga	33535554	Antibodies (Basel)	WB

Stockage

Stockage:

Stocker à -20°C. Stable pendant un an après l'expédition.

Tampon de stockage:

PBS avec azoture de sodium à 0,02 % et glycérol à 50 % pH 7,3

L'aliquoteage n'est pas nécessaire pour le stockage à -20C

*** Les 20ul contiennent 0,1% de BSA.

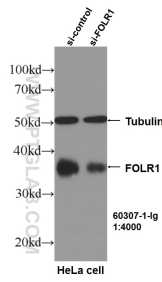
For technical support and original validation data for this product please contact:

T: 1 (888) 4PTGLAB (1-888-478-4522) (toll free in USA), or 1(312) 455-8498 (outside USA)

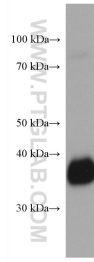
E: proteintech@ptglab.com
W: ptglab.com

This product is exclusively available under Proteintech Group brand and is not available to purchase from any other manufacturer.

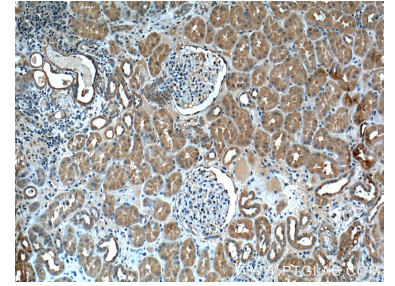
Données de validation sélectionnées



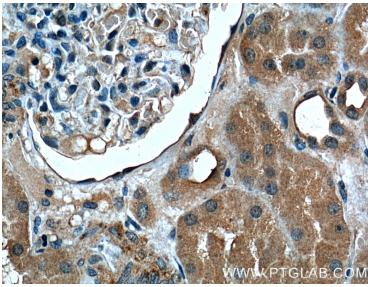
WB result of FOLR1 antibody (60307-1-Ig, 1:4000) with si-Control and si-FOLR1 transfected HeLa cells..



human milk were subjected to SDS PAGE followed by western blot with 60307-1-Ig (FOLR1 antibody) at dilution of 1:4000 incubated at room temperature for 1.5 hours.



Immunohistochemical analysis of paraffin-embedded human kidney tissue slide using 60307-1-Ig (FOLR1 Antibody) at dilution of 1:200 (under 10x lens).



Immunohistochemical analysis of paraffin-embedded human kidney tissue slide using 60307-1-Ig (FOLR1 Antibody) at dilution of 1:200 (under 40x lens).