

À des fins de recherche uniquement

Anticorps Monoclonal anti-pan Ras

Numéro de catalogue: 60309-1-Ig

Phare

13 Publications



Informations de base

Numéro de catalogue:

60309-1-Ig

Numéro d'acquisition GenBank:

BC013572

Méthode de purification:

Purification par protéine A

Taille:

150ul, Concentration: 830 µg/ml by Nanodrop and 500 µg/ml by Bradford method using BSA as the standard;

Identification du gène (NCBI):

3845

CloneNo.:

4H4G7

Hôte:

Mouse

Nom complet:

v-Ki-ras2 Kirsten rat sarcoma viral oncogene homolog

Dilutions recommandées:

WB 1:20000-1:50000
IP 0.5-4.0 ug for IP and 1:1000-1:4000 for WB
IHC 1:50-1:500

Isotype:

IgG1

MW calculé

188 aa, 21 kDa

MW observés:

21 kDa

Immunogen Catalog Number:

AG2700

Applications

Applications testées:

FC (Intra), IHC, IP, WB, ELISA

Demandes citées:

IF, IHC, WB

Spécificité de l'espèce:

Humain, Lapin, porc, poulet, rat, souris

Espèces citées:

Humain, porc, rat, souris

Remarque-IHC: il est suggéré de démasquer l'antigène avec un tampon de TE buffer pH 9.0; (*) A défaut, 'le démasquage de l'antigène peut être effectué avec un tampon citrate pH 6,0.

Contrôles positifs:

WB : tissu cérébral humain fœtal, cellules HEK-293, cellules Neuro-2a, cellules ROS1728, tissu cérébral de lapin, tissu cérébral de porc, tissu cérébral de poulet, tissu cérébral de rat, tissu cérébral de souris, tissu cérébral humain

IP : tissu cérébral de souris,

IHC : tissu de cancer du sein humain, tissu de cancer du côlon humain, tissu de cancer du poumon humain

Informations générales

The 21 kDa guanine-nucleotide binding proteins (K-Ras, H-Ras, and N-Ras) belong to the Ras oncogene family, whose members are related to the transforming genes of mammalian sarcoma retroviruses. K-Ras, H-Ras, and N-Ras have similar structure and sequences. These proteins can bind GTP and GDP, and they have intrinsic GTPase activity. The ras genes are ubiquitously expressed although mRNA analysis suggests different level expression in tissue. Mutations in each ras gene frequently were found in different tumors, suggesting their involvement in the development of specific neoplasia. This antibody can recognize K-Ras, H-Ras, and N-Ras.

Publications notables

Autrice	Pubmed ID	Journal	Application
Peng Yuan	27793842	Cancer Res	WB
Jia-Qing Zhang	33079330	Reprod Sci	WB
Wei Wang	33021072	J Cell Mol Med	WB

Stockage

Stockage:

Stocker à -20°C. Stable pendant un an après l'expédition.

Tampon de stockage:

PBS avec azoture de sodium à 0,02 % et glycérol à 50 % pH 7,3

L'aliquotage n'est pas nécessaire pour le stockage à -20C

*** Les 20ul contiennent 0,1% de BSA.

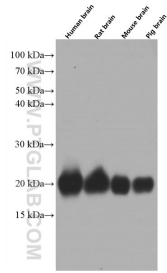
For technical support and original validation data for this product please contact:

T: 1 (888) 4PTGLAB (1-888-478-4522) (toll free in USA), or 1(312) 455-8498 (outside USA)

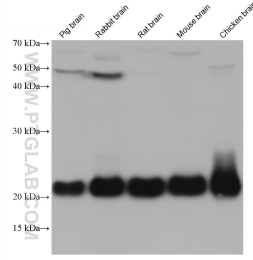
E: proteintech@ptglab.com
W: ptglab.com

This product is exclusively available under Proteintech Group brand and is not available to purchase from any other manufacturer.

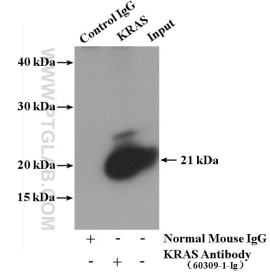
Données de validation sélectionnées



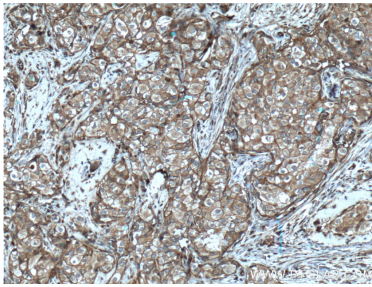
Various lysates were subjected to SDS PAGE followed by western blot with 60309-1-Ig (pan Ras Antibody) at dilution of 1:50000 incubated at room temperature for 1.5 hours.



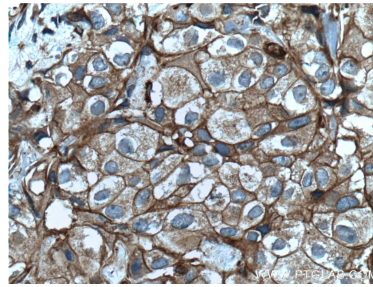
Various lysates were subjected to SDS PAGE followed by western blot with 60309-1-Ig (pan Ras antibody) at dilution of 1:50000 incubated at room temperature for 1.5 hours.



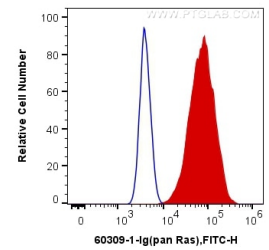
IP result of anti-pan Ras (IP:60309-1-Ig, 5ug; Detection:60309-1-Ig 1:2000) with mouse brain tissue lysate 4000 ug.



Immunohistochemical analysis of paraffin-embedded human breast cancer tissue slide using 60309-1-Ig (pan Ras Antibody) at dilution of 1:200 (under 10x lens). Heat mediated antigen retrieval with Tris-EDTA buffer (pH 9.0).



Immunohistochemical analysis of paraffin-embedded human breast cancer tissue slide using 60309-1-Ig (pan Ras Antibody) at dilution of 1:200 (under 40x lens). Heat mediated antigen retrieval with Tris-EDTA buffer (pH 9.0).



1×10^6 HeLa cells were intracellularly stained with 0.4 ug Anti-Human pan Ras (60309-1-Ig, Clone:4H4G7) and CoraLite®488-Conjugated AffiniPure Goat Anti-Mouse IgG(H+L) at dilution 1:1000 (red), or 0.4 ug Control Antibody. Cells were fixed with 4% PFA and permeabilized with Flow Cytometry Perm Buffer (PF00011-C).