

À des fins de recherche uniquement

# Anticorps Monoclonal anti-HER2/ErbB2



Numéro de catalogue: 60311-1-Ig **4 Publications**

## Informations de base

<b>Numéro de catalogue:</b> 60311-1-Ig	<b>Numéro d'acquisition GenBank:</b> BC156755	<b>Méthode de purification:</b> Purification par protéine A
<b>Taille:</b> 150ul, Concentration: 1500 µg/ml by Nanodrop and 1000 µg/ml by Bradford method using BSA as the standard;	<b>Identification du gène (NCBI):</b> 2064	<b>CloneNo.:</b> 1B12A7
<b>Hôte:</b> Mouse	<b>Nom complet:</b> v-erb-b2 erythroblastic leukemia viral oncogene homolog 2, neuro/glioblastoma derived oncogene homolog (avian)	<b>Dilutions recommandées:</b> IHC 1:800-1:3200 IF 1:50-1:500
<b>Isotype:</b> IgG2b	<b>MW calculé</b> 1255 aa, 138 kDa	
<b>Immunogen Catalog Number:</b> AG16463		

## Applications

<b>Applications testées:</b> FC, IF, IHC, ELISA	<b>Contrôles positifs:</b> IHC : tissu de cancer du sein humain, IF : tissu de cancer du sein humain,
<b>Demandes citées:</b> IF, IHC	
<b>Spécificité de l'espèce:</b> Humain	
<b>Espèces citées:</b> Humain	

**Remarque-IHC: il est suggéré de démasquer l'antigène avec un tampon de TE buffer pH 9,0; (\*) A défaut, 'le démasquage de l'antigène peut être effectué avec un tampon citrate pH 6,0.**

## Informations générales

HER2, also known as ErbB2 and Neu, is a 185-kDa transmembrane glycoprotein that is a member of the epidermal growth factor (EGF) receptor family of receptor tyrosine kinases. It has no ligand binding domain of its own and therefore cannot bind growth factors. However, it does bind tightly to other ligand-bound EGF receptor family members to form a heterodimer, stabilizing ligand binding and enhancing kinase-mediated activation of downstream signalling pathways, such as those involving mitogen-activated protein kinase and phosphatidylinositol-3 kinase. Amplification and/or overexpression of HER2 have been reported in numerous cancers, including breast and ovarian tumors. HER2 is a therapeutic target for the treatment of breast cancer and other carcinomas.

## Publications notables

Autrice	Pubmed ID	Journal	Application
Yanlin Wu	30127983	Oncol Lett	IHC
Fei Xing	36627608	Mol Cancer	IF
Xin Zhou	32127954	J Cancer	IHC

## Stockage

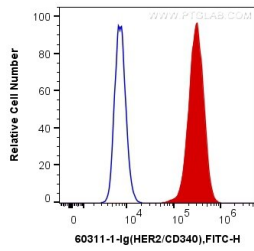
**Stockage:**  
Stocker à -20°C. Stable pendant un an après l'expédition.  
**Tampon de stockage:**  
PBS avec azotate de sodium à 0,02 % et glycérol à 50 % pH 7,3  
L'aliquotage n'est pas nécessaire pour le stockage à -20C

\*\*\* Les 20ul contiennent 0,1% de BSA.

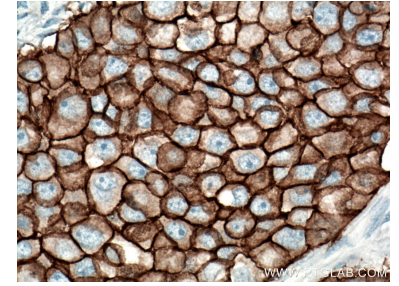
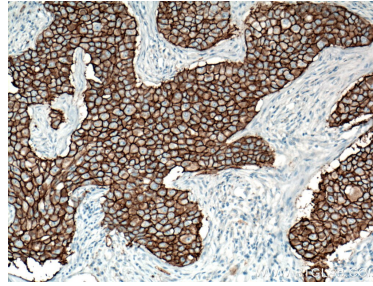
For technical support and original validation data for this product please contact:  
T: 1 (888) 4PTGLAB (1-888-478-4522) (toll free in USA), or 1(312) 455-8498 (outside USA)  
E: proteintech@ptglab.com  
W: ptglab.com

This product is exclusively available under Proteintech Group brand and is not available to purchase from any other manufacturer.

## Données de validation sélectionnées

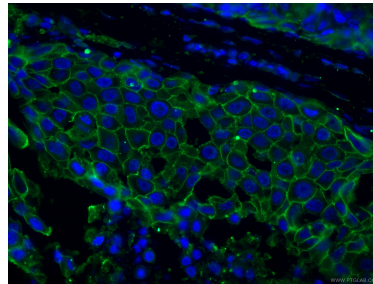
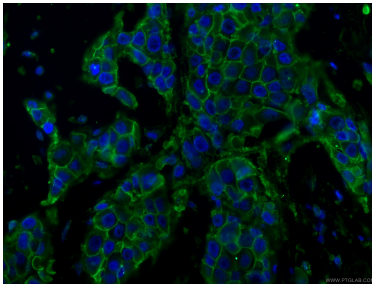


1X10<sup>6</sup> SK-BR-3 cells were intracellularly stained with 0.4 ug Anti-Human HER2/ErbB2 (60311-1-Ig, Clone:1B12A7) and CoraLite®488-Conjugated AffiniPure Goat Anti-Mouse IgG(H+L) at dilution 1:1000 (red), or 0.4 ug Mouse IgG2b Isotype Control (66360-3-Ig, Clone: K11B8C4B5) (blue). Cells were fixed with 4% PFA and permeabilized with Flow Cytometry Perm Buffer (PF00011-C).



Immunohistochemical analysis of paraffin-embedded human breast cancer tissue slide using 60311-1-Ig (HER2/ErbB2 antibody) at dilution of 1:1600 (under 10x lens). Heat mediated antigen retrieval with Tris-EDTA buffer (pH 9.0).

Immunohistochemical analysis of paraffin-embedded human breast cancer tissue slide using 60311-1-Ig (HER2/ErbB2 antibody) at dilution of 1:1600 (under 40x lens). Heat mediated antigen retrieval with Tris-EDTA buffer (pH 9.0).



Immunofluorescent analysis of (4% PFA) fixed human breast cancer tissue using 60311-1-Ig (HER2/ErbB2 antibody), at dilution of 1:200 and CoraLite®488-Conjugated AffiniPure Goat Anti-Mouse IgG(H+L).

Immunofluorescent analysis of (4% PFA) fixed human breast cancer tissue using 60311-1-Ig (HER2/ErbB2 antibody), at dilution of 1:200 and CoraLite®488-Conjugated AffiniPure Goat Anti-Mouse IgG(H+L).