

À des fins de recherche uniquement

# Anticorps Monoclonal anti-CDK2

Numéro de catalogue: 60312-1-Ig **15 Publications**



## Informations de base

Numéro de catalogue: 60312-1-Ig	Numéro d'acquisition GenBank: BC003065	Méthode de purification: Précipitation de l'acide caprylique/du sulfate d'ammonium
Taille: 150ul , Concentration: 1000 µg/ml by Nanodrop and 1000 µg/ml by Bradford method using BSA as the standard;	Identification du gène (NCBI): 1017	CloneNo.: 4E2E10
Hôte: Mouse	Nom complet: cyclin-dependent kinase 2	Dilutions recommandées: WB 1:500-1:2000 IHC 1:20-1:200 IF 1:500-1:2000
Isotype: IgM	MW calculé: 33 kDa	
Immunogen Catalog Number: AG21310	MW observés: 37 kDa	

## Applications

Applications testées: FC, IF, IHC, WB, ELISA	Contrôles positifs: WB : cellules K-562, IHC : tissu de lymphome humain, tissu de cancer du col de l'utérus humain IF : cellules HeLa,
Demandes citées: IHC, WB	
Spécificité de l'espèce: Humain	
Espèces citées: Humain, souris	
<b>Remarque-IHC: il est suggéré de démasquer l'antigène avec un tampon de TE buffer pH 9,0; (*) A défaut, 'le démasquage de l'antigène peut être 'effectué avec un tampon citrate pH 6,0.</b>	

## Informations générales

CDK2(Cyclin-dependent kinase 2) is also named as CDKN2 and belongs to the protein kinase superfamily,CMGC Ser/Thr protein kinase family, CDC2/CDKX subfamily.It is involved in the control of the cell cycle; essential for meiosis, but dispensable for mitosis.It has 2 isoforms produced by alternative splicing.

## Publications notables

Autrice	Pubmed ID	Journal	Application
Jingwen Tan	36208777	Chem Biol Interact	WB
Chenxiang Qi	34650666	Oxid Med Cell Longev	WB
Mengqi Cui	34602553	Biol Pharm Bull	WB

## Stockage

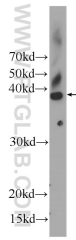
Stockage:  
Stocker à -20°C. Stable pendant un an après l'expédition.  
Tampon de stockage:  
PBS avec azoture de sodium à 0,02 % et glycérol à 50 % pH 7,3  
L'aliquoteur n'est pas nécessaire pour le stockage à -20C

\*\*\* Les 20ul contiennent 0,1% de BSA.

For technical support and original validation data for this product please contact:  
T: 1 (888) 4PTGLAB (1-888-478-4522) (toll free in USA), or 1(312) 455-8498 (outside USA)  
E: proteintech@ptglab.com  
W: ptglab.com

This product is exclusively available under Proteintech Group brand and is not available to purchase from any other manufacturer.

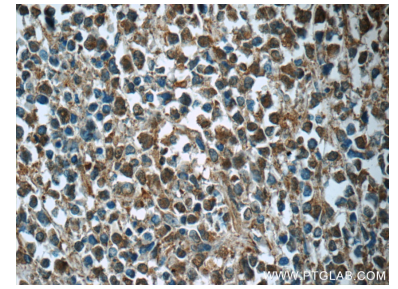
## Données de validation sélectionnées



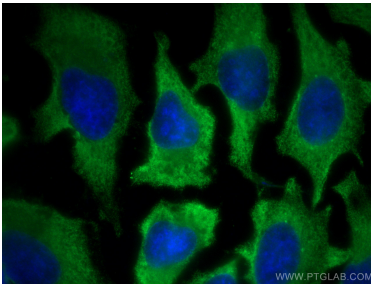
K-562 cells were subjected to SDS PAGE followed by western blot with 60312-1-Ig (CDK2 Antibody) at dilution of 1:1000 incubated at room temperature for 1.5 hours.



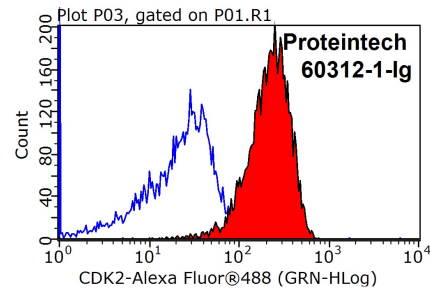
Immunohistochemical analysis of paraffin-embedded human lymphoma tissue slide using 60312-1-Ig (CDK2 Antibody) at dilution of 1:50 (under 10x lens).



Immunohistochemical analysis of paraffin-embedded human lymphoma tissue slide using 60312-1-Ig (CDK2 Antibody) at dilution of 1:50 (under 40x lens).



Immunofluorescent analysis of (-20°C Methanol) fixed HeLa cells using CDK2 antibody (60312-1-Ig, Clone: 4E2E10) at dilution of 1:1000 and CoraLite@488-Conjugated AffiniPure Goat Anti-Mouse IgG(H+L).



1X10<sup>6</sup> Jurkat cells were stained with 0.2ug CDK2 antibody (60312-1-Ig, red) and control antibody (blue). Fixed with 90% MeOH blocked with 3% BSA (30 min). Alexa Fluor 488-conjugated AffiniPure Goat Anti-Mouse IgG(H+L) with dilution 1:1000.