

À des fins de recherche uniquement

# Anticorps Monoclonal anti-CREST

Numéro de catalogue: 60314-1-Ig



## Informations de base

Numéro de catalogue:	60314-1-Ig	Numéro d'acquisition GenBank:	BC034494	Méthode de purification:	Purification par protéine G
Taille:	150ul, Concentration: 1500 µg/ml by Nanodrop and 1000 µg/ml by Bradford method using BSA as the standard;	Identification du gène (NCBI):	26039	CloneNo.:	3D5D10
Hôte:	Mouse	Nom complet:	synovial sarcoma translocation gene on chromosome 18-like 1		
Isotype:	IgG1	MW calculé	396 aa, 43 kDa		
Immunogen Catalog Number:	AG3119	MW observés:	50 kDa		

## Applications

Applications testées:  
WB, ELISA

Spécificité de l'espèce:  
Humain, rat, souris

## Informations générales

SS18-like 1 (SS18L1) is a transcriptional activator that is required for calcium-dependent dendritic growth and branching in cortical neurons. It's also a nuclear protein that interacts with CREB-binding protein and is expressed in the developing brain. It helps regulate neuronal morphogenesis in a calcium-dependent manner. The N-terminal domain of SS18L1 is required for suppressing transactivation in the basal state, while the C-terminal domain is required for calcium-induced transactivation. It's part of the CREST-BRG1 complex, a multiprotein complex that regulates promoter activation by orchestrating a calcium-dependent release of a repressor complex and a recruitment of an activator complex. This complex also binds to the NR2B promoter, and activity-dependent induction of NR2B expression involves a release of HDAC1 and recruitment of CREBBP. The calculated molecular weight of CREST is about 43 kDa, but the modified CREST protein is 55 kDa (PMID: 25888396).

## Stockage

Stockage:  
Stocker à -20°C. Stable pendant un an après l'expédition.

Tampon de stockage:  
PBS avec azote de sodium à 0,02 % et glycérol à 50 % pH 7,3  
L'aliquotage n'est pas nécessaire pour le stockage à -20°C

\*\*\* Les 20ul contiennent 0,1% de BSA.

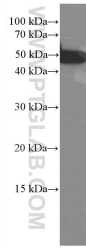
For technical support and original validation data for this product please contact:

T: 1 (888) 4PTGLAB (1-888-478-4522) (toll free in USA), or 1(312) 455-8498 (outside USA)

E: [proteintech@ptglab.com](mailto:proteintech@ptglab.com)  
W: [ptglab.com](http://ptglab.com)

This product is exclusively available under Proteintech Group brand and is not available to purchase from any other manufacturer.

## Données de validation sélectionnées



NIH/3T3 cells were subjected to SDS PAGE followed by western blot with 60314-1-Ig (CREST antibody) at dilution of 1:3000 incubated at room temperature for 1.5 hours.