

À des fins de recherche uniquement

# Anticorps Monoclonal anti-c-SRC

Numéro de catalogue: 60315-1-Ig **10 Publications**



## Informations de base

<b>Numéro de catalogue:</b> 60315-1-Ig	<b>Numéro d'acquisition GenBank:</b> BC011566	<b>Méthode de purification:</b> Purification par protéine A
<b>Taille:</b> 150ul , Concentration: 1500 µg/ml by Nanodrop and 1000 µg/ml by Bradford method using BSA as the standard;	<b>Identification du gène (NCBI):</b> 6714	<b>CloneNo.:</b> 5E10C4
<b>Hôte:</b> Mouse	<b>Nom complet:</b> v-src sarcoma (Schmidt-Ruppin A-2) viral oncogene homolog (avian)	<b>Dilutions recommandées:</b> WB 1:5000-1:50000 IHC 1:100-1:400 IF 1:50-1:500
<b>Isotype:</b> IgG2b	<b>MW calculé:</b> 60 kDa	
<b>Immunogen Catalog Number:</b> AG22306	<b>MW observés:</b> 60 kDa	

## Applications

### Applications testées:

IF, IHC, WB, ELISA

### Demandes citées:

IF, WB

### Spécificité de l'espèce:

Humain, rat, souris, Hamster

### Espèces citées:

Humain, souris

**Remarque-IHC: il est suggéré de démasquer l'antigène avec un tampon de TE buffer pH 9,0; (\*) A défaut, 'le démasquage de l'antigène peut être 'effectué avec un tampon citrate pH 6,0.**

### Contrôles positifs:

**WB :** cellules HeLa, cellules 4T1, cellules CHO, cellules HEK-293, cellules HepG2, cellules HSC-T6, cellules Jurkat, cellules NIH/3T3, cellules PC-12, cellules RAW 264.7

**IHC :** tissu de cancer du sein humain,

**IF :** cellules MCF-7,

## Informations générales

SRC, also named as SRC1 and p60-Src, belongs to the protein kinase superfamily, Tyr protein kinase family and SRC subfamily. It is a non-receptor protein tyrosine kinase that plays pivotal roles in numerous cellular processes such as proliferation, migration, and transformation. In concert with PTK2B, SRC plays an important role in osteoclastic bone resorption. It promotes energy production in osteoclasts by activating mitochondrial cytochrome C oxidase.

## Publications notables

Autrice	Pubmed ID	Journal	Application
Fan Yang	26347956	Nat Commun	WB
Márcia Faria	36358781	Cancers (Basel)	WB
Shiyu Wu	34821070	Adv Sci (Weinh)	IF

## Stockage

### Stockage:

Stocker à -20°C. Stable pendant un an après l'expédition.

### Tampon de stockage:

PBS avec azoture de sodium à 0,02 % et glycérol à 50 % pH 7,3

L'aliquotage n'est pas nécessaire pour le stockage à -20C

**\*\*\* Les 20ul contiennent 0,1% de BSA.**

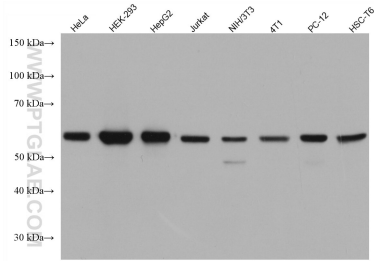
For technical support and original validation data for this product please contact:

T: 1 (888) 4PTGLAB (1-888-478-4522) (toll free in USA), or 1(312) 455-8498 (outside USA)

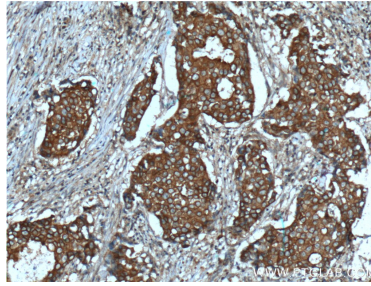
E: proteintech@ptglab.com  
W: ptglab.com

**This product is exclusively available under Proteintech Group brand and is not available to purchase from any other manufacturer.**

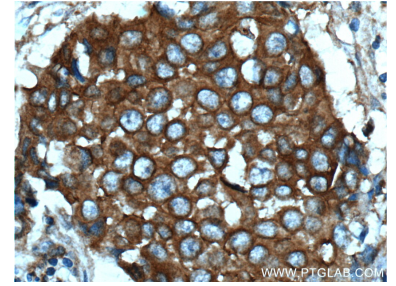
## Données de validation sélectionnées



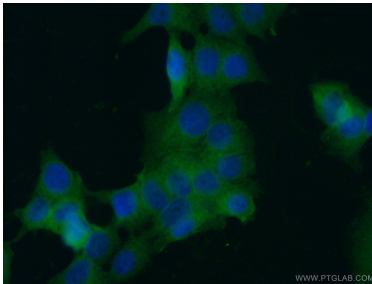
Various lysates were subjected to SDS PAGE followed by western blot with 60315-1-Ig (c-SRC antibody) at dilution of 1:10000 incubated at room temperature for 1.5 hours.



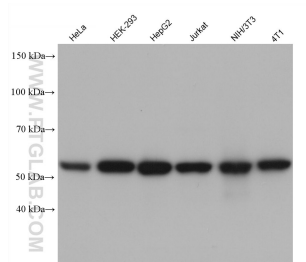
Immunohistochemical analysis of paraffin-embedded human breast cancer tissue slide using 60315-1-Ig (c-SRC Antibody) at dilution of 1:200 (under 10x lens). Heat mediated antigen retrieval with Tris-EDTA buffer (pH 9.0).



Immunohistochemical analysis of paraffin-embedded human breast cancer tissue slide using 60315-1-Ig (c-SRC Antibody) at dilution of 1:200 (under 40x lens). Heat mediated antigen retrieval with Tris-EDTA buffer (pH 9.0).



Immunofluorescent analysis of (-20°C Ethanol) fixed MCF-7 cells using 60315-1-Ig(c-SRC antibody) at dilution of 1:100 and Alexa Fluor 488-conjugated AffiniPure Goat Anti-Mouse IgG(H+L).



Various lysates were subjected to SDS PAGE followed by western blot with 60315-1-Ig (c-SRC antibody) at dilution of 1:10000 incubated at room temperature for 1.5 hours.