

À des fins de recherche uniquement

Anticorps Monoclonal anti-GOT1

Numéro de catalogue: 60317-1-Ig **1 Publications**



Informations de base

Numéro de catalogue: 60317-1-Ig	Numéro d'acquisition GenBank: BC000498	Méthode de purification: Purification par protéine G
Taille: 150ul, Concentration: 1100 µg/ml by Nanodrop and 500 µg/ml by Bradford method using BSA as the standard;	Identification du gène (NCBI): 2805	CloneNo.: 5A12E10
Hôte: Mouse	Nom complet: glutamic-oxaloacetic transaminase 1, soluble (aspartate aminotransferase 1)	Dilutions recommandées: IHC 1:20-1:200 IF 1:50-1:500
Isotype: IgG1	MW calculé 46 kDa	
Immunogen Catalog Number: AG7012	MW observés: 40-46 kDa	

Applications

Applications testées:
FC, IF, IHC, WB, ELISA

Demandes citées:
WB

Spécificité de l'espèce:
Humain, poulet, rat, souris

Espèces citées:
Humain

Remarque-IHC: il est suggéré de démasquer l'antigène avec un tampon de TE buffer pH 9,0; (*) A défaut, 'le démasquage de l'antigène peut être 'effectué avec un tampon citrate pH 6,0.

Contrôles positifs:

WB : cellules LNCaP, cellules K-562, cerveau de poulet, cœur de poulet, tissu cardiaque de rat, tissu cérébral de rat, tissu cérébral de souris

IHC : tissu de cancer du foie humain,

IF : cellules HepG2,

Informations générales

Glutamate oxaloacetate transaminase 1 (GOT1) catalyzes the reversible reaction of L-aspartate and alpha-ketoglutarate into oxaloacetate and L-glutamate and plays a key role in carbon and nitrogen metabolism. GOT1 can potentially control the intracellular levels of reactive oxygen species (ROS) through NADPH synthesis and enhances tumor growth. GOT1 expression correlates with the growth of several tumors.

Publications notables

Autrice	Pubmed ID	Journal	Application
Wenzhu Li	28544376	J Cell Mol Med	WB
Chuanzhen Yang	37291265	Nat Cell Biol	WB,IF,IP

Stockage

Stockage:

Stocker à -20°C. Stable pendant un an après l'expédition.

Tampon de stockage:

PBS avec azoture de sodium à 0,02 % et glycérol à 50 % pH 7,3

L'aliquotage n'est pas nécessaire pour le stockage à -20C

*** Les 20ul contiennent 0,1% de BSA.

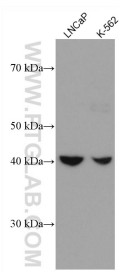
For technical support and original validation data for this product please contact:

T: 1 (888) 4PTGLAB (1-888-478-4522) (toll free in USA), or 1(312) 455-8498 (outside USA)

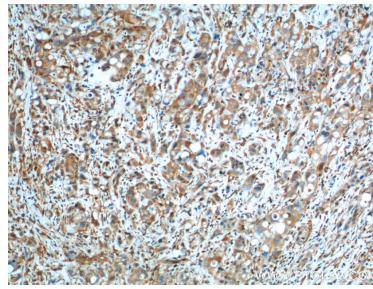
E: proteintech@ptglab.com
W: ptglab.com

This product is exclusively available under Proteintech Group brand and is not available to purchase from any other manufacturer.

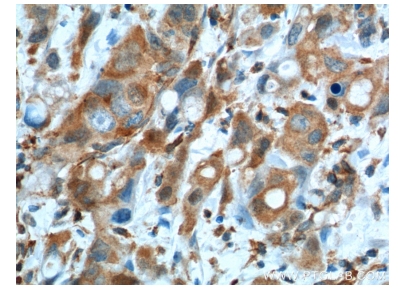
Données de validation sélectionnées



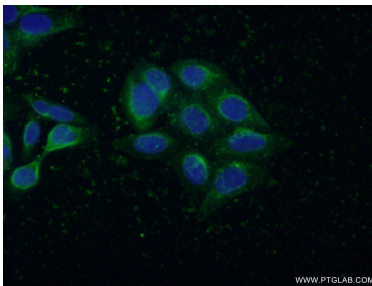
Various lysates were subjected to SDS PAGE followed by western blot with 60317-1-Ig (GOT1 antibody) at dilution of 1:5000 incubated at room temperature for 1.5 hours.



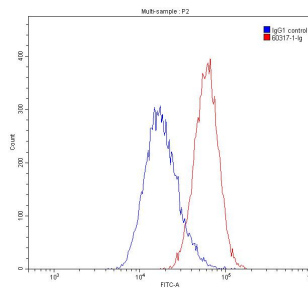
Immunohistochemical analysis of paraffin-embedded human liver cancer tissue slide using 60317-1-Ig (GOT1 Antibody) at dilution of 1:200 (under 10x lens). Heat mediated antigen retrieval with Tris-EDTA buffer (pH 9.0).



Immunohistochemical analysis of paraffin-embedded human liver cancer tissue slide using 60317-1-Ig (GOT1 Antibody) at dilution of 1:200 (under 40x lens). Heat mediated antigen retrieval with Tris-EDTA buffer (pH 9.0).



Immunofluorescent analysis of (-20°C Ethanol) fixed HepG2 cells using 60317-1-Ig (GOT1 antibody) at dilution of 1:100 and Alexa Fluor 488-conjugated AffiniPure Goat Anti-Mouse IgG(H+L).



1×10^6 HepG2 cells were stained with 0.20ug GOT1 antibody (60317-1-Ig, red) and control antibody (blue). Fixed with 90% MeOH.