

À des fins de recherche uniquement

Anticorps Monoclonal anti-IL-1F10

Numéro de catalogue: 60319-1-Ig



Informations de base

Numéro de catalogue: 60319-1-Ig	Numéro d'acquisition GenBank: BC103966	Méthode de purification: Purification par protéine A
Taille: 150ul , Concentration: 2000 µg/ml by Bradford method using BSA as the standard;	Identification du gène (NCBI): 84639	CloneNo.: 5B2F5
Hôte: Mouse	Nom complet: interleukin 1 family, member 10 (theta)	Dilutions recommandées: WB 1:500-1:2000
Isotype: IgG1	MW calculé 152 aa, 17 kDa	
Immunogen Catalog Number: AG17250		

Applications

Applications testées: FC, WB, ELISA	Contrôles positifs: WB : Protéine recombinante,
Spécificité de l'espèce: Humain	

Informations générales

IL1F10 is a member of the interleukin 1 cytokine family. This cytokine is thought to participate in a network of interleukin 1 family members to regulate adapted and innate immune responses.

Stockage

Stockage:
Stocker à -20°C. Stable pendant un an après l'expédition.
Tampon de stockage:
PBS avec azoture de sodium à 0,02 % et glycérol à 50 % pH 7,3
L'aliquotage n'est pas nécessaire pour le stockage à -20C

*** Les 20ul contiennent 0,1% de BSA.

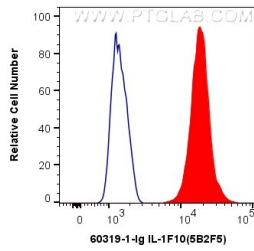
For technical support and original validation data for this product please contact:

T: 1 (888) 4PTGLAB (1-888-478-4522) (toll free
in USA), or 1(312) 455-8498 (outside USA)

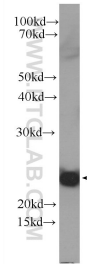
E: proteintech@ptglab.com
W: ptglab.com

This product is exclusively available under Proteintech Group brand and is not available to purchase from any other manufacturer.

Données de validation sélectionnées



1X10⁶ U-937 cells were intracellularly stained with 0.4 ug Anti-Human IL-1F10 (60319-1-Ig, Clone:5B2F5) and CoraLite®488-Conjugated AffiniPure Goat Anti-Mouse IgG(H+L) at dilution 1:1000 (red), or 0.4 ug Control Antibody. Cells were fixed with 4% PFA and permeabilized with Flow Cytometry Perm Buffer (PF00011-C).



Recombinant protein were subjected to SDS PAGE followed by western blot with 60319-1-Ig (IL1F10 Antibody) at dilution of 1:1000 incubated at room temperature for 1.5 hours.