

À des fins de recherche uniquement

Anticorps Monoclonal anti-CD39/ENTPD1



Numéro de catalogue:60323-1-Ig

Informations de base

Numéro de catalogue: 60323-1-Ig	Numéro d'acquisition GenBank: BC047664	Méthode de purification: Purification par protéine A
Taille: 150ul , Concentration: 1300 µg/ml by Nanodrop and 1000 µg/ml by Bradford method using BSA as the standard;	Identification du gène (NCBI): 953	CloneNo.: 2D2H6
Hôte: Mouse	Nom complet: ectonucleoside triphosphate diphosphohydrolase 1	Dilutions recommandées: WB 1:500-1:1000 IHC 1:50-1:500 IF 1:20-1:200
Isotype: IgG2a	MW calculé: 58 kDa	
Immunogen Catalog Number: AG6165	MW observés: 54 kDa	

Applications

Applications testées: FC, IF, IHC, WB, ELISA	Contrôles positifs: WB : cellules Jurkat, tissu placentaire humain IHC : tissu placentaire humain, IF : cellules HeLa,
Spécificité de l'espèce: Humain	
Remarque-IHC: il est suggéré de démasquer l'antigène avec un tampon de TE buffer pH 9.0; (*) À défaut, 'le démasquage de l'antigène peut être 'effectué avec un tampon citrate pH 6,0.	

Informations générales

ENTPD1(Ectonucleoside triphosphate diphosphohydrolase 1) is also named as CD39, NTPDase 1, Ecto-ATPDase 1 and belongs to the GDA1/CD39 NTPase family. In the nervous system, it can hydrolyze ATP and other nucleotides to regulate purinergic neurotransmission. It is a noncovalent tetrameric protein and that detergent inhibition of enzymatic activity is caused by dissociation of ectoapyrase tetramers into monomers(PMID: 9733785). And it is a 70- to 100-kDa protein that is heavily N-glycosylated(PMID:7930580). This protein has 6 glycosylation sites and 3 isoforms(58 kDa, 59 kDa and 34 kDa) produced by alternative splicing. The soluble isoform of CD39(38-478 amino acid) locates to the extracellular part and 60323-1-Ig can recognize the soluble form of CD39 (38-478aa) molecule.

Stockage

Stockage:
Stocker à -20°C. Stable pendant un an après l'expédition.
Tampon de stockage:
PBS avec azoture de sodium à 0,02 % et glycérol à 50 % pH 7,3
L'aliquotage n'est pas nécessaire pour le stockage à -20C

*** Les 20ul contiennent 0,1% de BSA.

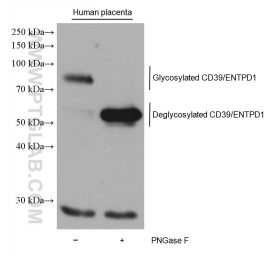
For technical support and original validation data for this product please contact:

T: 1 (888) 4PTGLAB (1-888-478-4522) (toll free in USA), or 1(312) 455-8498 (outside USA)

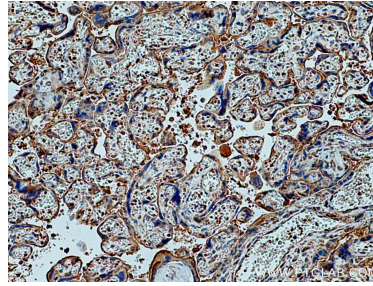
E: proteintech@ptglab.com
W: ptglab.com

This product is exclusively available under Proteintech Group brand and is not available to purchase from any other manufacturer.

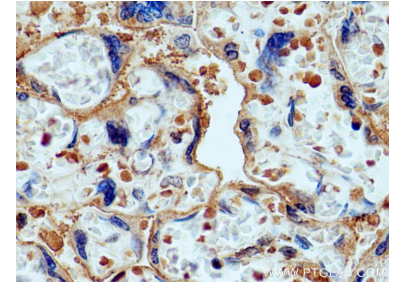
Données de validation sélectionnées



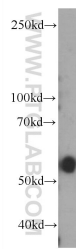
Various lysates were subjected to SDS PAGE followed by western blot with 60323-1-Ig (CD39/ENTPD1 antibody) at dilution of 1:10000 incubated at room temperature for 1.5 hours.



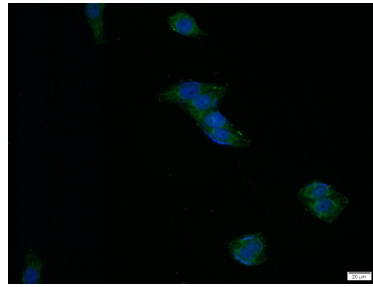
Immunohistochemical analysis of paraffin-embedded human placenta tissue slide using 60323-1-Ig (CD39/ENTPD1 antibody) at dilution of 1:100 (under 10x lens). Heat mediated antigen retrieval with Tris-EDTA buffer (pH 9.0).



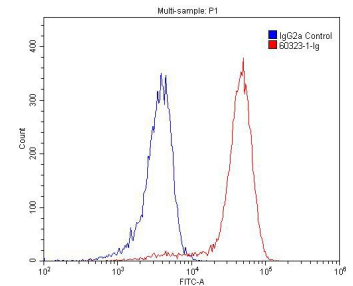
Immunohistochemical analysis of paraffin-embedded human placenta tissue slide using 60323-1-Ig (CD39/ENTPD1 antibody) at dilution of 1:100 (under 40x lens). Heat mediated antigen retrieval with Tris-EDTA buffer (pH 9.0).



Jurkat cells were subjected to SDS PAGE followed by western blot with 60323-1-Ig (ENTPD1 Antibody) at dilution of 1:500 incubated at room temperature for 1.5 hours.



Immunofluorescent analysis of HeLa cells using 60323-1-Ig (ENTPD1 antibody) at dilution of 1:50 and Alexa Fluor 488-conjugated AffiniPure Goat Anti-Mouse IgG (H+L).



1X10⁶ Jurkat cells were stained with 0.2ug ENTPD1 antibody (60323-1-Ig, red) and control antibody (blue). Fixed with 4% PFA blocked with 3% BSA (30 min). Alexa Fluor 488-conjugated AffiniPure Goat Anti-Mouse IgG(H+L) with dilution 1:1500.