

À des fins de recherche uniquement

Anticorps Monoclonal anti-FGFR1

Numéro de catalogue: 60325-1-Ig **23 Publications**



Informations de base

Numéro de catalogue: 60325-1-Ig	Numéro d'acquisition GenBank: BC018128	Méthode de purification: Purification par protéine A
Taille: 150ul , Concentration: 1800 µg/ml by Nanodrop and 1120 µg/ml by Bradford method using BSA as the standard;	Identification du gène (NCBI): fibroblast growth factor receptor 1	CloneNo.: 10F12E7
Hôte: Mouse	Nom complet: fibroblast growth factor receptor 1	Dilutions recommandées: WB 1:1000-1:3000 IHC 1:50-1:500
Isotype: IgG2c	MW calculé: 820 aa, 91 kDa	
Immunogen Catalog Number: AG3646	MW observés: 91 kDa	

Applications

Applications testées:

FC, IHC, WB, ELISA

Demandes citées:

IF, IHC, WB

Spécificité de l'espèce:

Humain, rat, souris

Espèces citées:

Humain

Remarque-IHC: il est suggéré de démasquer l'antigène avec un tampon de TE buffer pH 9,0; (*) À défaut, 'le démasquage de l'antigène peut être 'effectué avec un tampon citrate pH 6,0.

Contrôles positifs:

WB : cellules MCF-7, cellules 4T1, cellules HSC-T6, cellules HT-1080, cellules HUVEC, cellules K-562, cellules NIH/3T3, cellules U2OS, cellules Y79

IHC : tissu de cancer du sein humain,

Informations générales

Fibroblast growth factor receptor 1 (FGFR1) is a tyrosine-protein kinase that acts as cell-surface receptor for fibroblast growth factors. FGFR1 has been implicated in diverse biological processes including embryonic development, cell proliferation, differentiation, migration, and tumorigenesis. Mutations in FGFR1 gene have been associated with Pfeiffer syndrome, Jackson-Weiss syndrome, Antley-Bixler syndrome, osteoglophonic dysplasia, squamous cell lung cancer and autosomal dominant Kallmann syndrome. Alternatively spliced variants which encode different protein isoforms have been described.

Publications notables

Autrice	Pubmed ID	Journal	Application
Lili Yang	28928430	Sci Rep	WB,IHC
Libo Hou	28889064	Mol Immunol	WB
T Wang	26535691	Genet Mol Res	WB

Stockage

Stockage:

Stocker à -20°C. Stable pendant un an après l'expédition.

Tampon de stockage:

PBS avec azoture de sodium à 0,02 % et glycérol à 50 % pH 7,3

L'aliquotage n'est pas nécessaire pour le stockage à -20C

*** Les 20ul contiennent 0,1% de BSA.

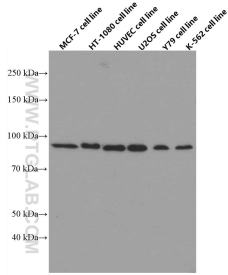
For technical support and original validation data for this product please contact:

T: 1 (888) 4PTGLAB (1-888-478-4522) (toll free in USA), or 1(312) 455-8498 (outside USA)

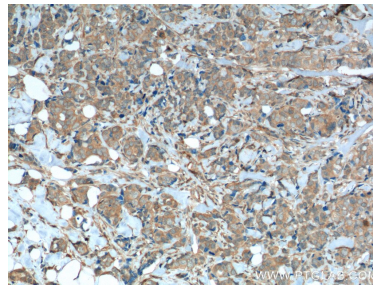
E: proteintech@ptglab.com
W: ptglab.com

This product is exclusively available under Proteintech Group brand and is not available to purchase from any other manufacturer.

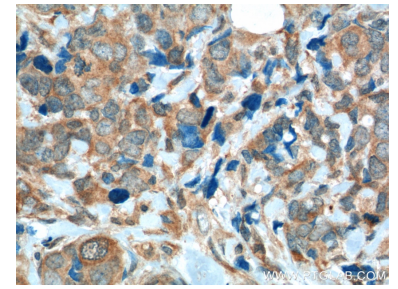
Données de validation sélectionnées



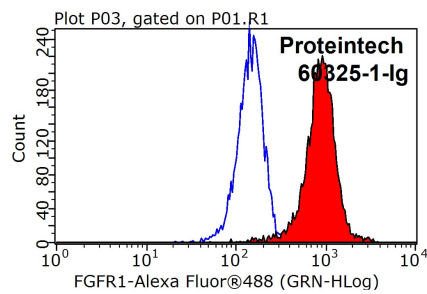
MCF-7, HT-1080, HUVEC, U2OS, Y79, and K-562 cells were subjected to SDS PAGE followed by western blot with 60325-1-Ig (FGFR1 antibody) at dilution of 1:3000 incubated at room temperature for 1.5 hours.



Immunohistochemical analysis of paraffin-embedded human breast cancer tissue slide using 60325-1-Ig (FGFR1 Antibody) at dilution of 1:200 (under 10x lens). Heat mediated antigen retrieval with Tris-EDTA buffer (pH 9.0).



Immunohistochemical analysis of paraffin-embedded human breast cancer tissue slide using 60325-1-Ig (FGFR1 Antibody) at dilution of 1:200 (under 40x lens). Heat mediated antigen retrieval with Tris-EDTA buffer (pH 9.0).



1×10^6 K-562 cells were stained with 0.2ug FGFR1 antibody (60325-1-Ig, red) and control antibody (blue). Fixed with 90% MeOH blocked with 3% BSA (30 min). Alexa Fluor 488-conjugated AffiniPure Goat Anti-Mouse IgG(H+L) with dilution 1:1000.