

À des fins de recherche uniquement

Anticorps Monoclonal anti-Bestrophin-1



Numéro de catalogue: 60326-1-Ig **1 Publications**

Informations de base

Numéro de catalogue: 60326-1-Ig	Numéro d'acquisition GenBank: BC015220	Méthode de purification: Purification par protéine G
Taille: 150ul , Concentration: 780 µg/ml by Bradford method using BSA as the standard;	Identification du gène (NCBI): 7439	CloneNo.: 4D5F1
Hôte: Mouse	Nom complet: bestrophin 1	Dilutions recommandées: WB 1:500-1:2000 IF 1:200-1:800
Isotype: IgG1	MW calculé: 585 aa, 68 kDa	
Immunogen Catalog Number: AG15129	MW observés: 68 kDa	

Applications

Applications testées: IF, WB, ELISA	Contrôles positifs: WB : cellules Y79, cellules HEK-293 transfectées IF : cellules Y79,
Demandes citées: IF	
Spécificité de l'espèce: Humain	
Espèces citées: Humain	

Informations générales

Bestrophin-1 (BEST1) is a 68 kDa transmembrane protein which belongs to the bestrophin family of anion channels. It is predominantly expressed in the basolateral membrane of the retinal pigment epithelium. Studies show that bestrophin 1 functions as a Ca(2+)-dependent Cl(-) channel and modulator of voltage-dependent L-type Ca(2+) channels. It may also contribute to the basolateral cell conductance in airway epithelial cells. This protein is encoded by the VMD2 gene. Mutations in VMD2 can lead to different types of retinal or macular degenerations, including Best vitelliform macular dystrophy (BMD), autosomal recessive bestrophinopathy (ARB), autosomal dominant vitreoretinopathopathy (ADVIRC) and adult-onset vitelliform macular dystrophy (AVMD).

Publications notables

Autrice	Pubmed ID	Journal	Application
Xiaoman Zhu	36096985	Cell Death Dis	IF

Stockage

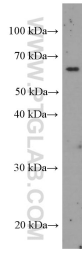
Stockage:
Stocker à -20°C. Stable pendant un an après l'expédition.
Tampon de stockage:
PBS avec azoture de sodium à 0,02 % et glycérol à 50 % pH 7,3
L'aliquotage n'est pas nécessaire pour le stockage à -20C

*** Les 20ul contiennent 0,1% de BSA.

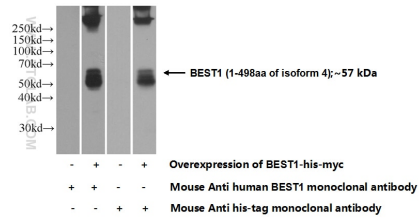
For technical support and original validation data for this product please contact:
T: 1 (888) 4PTGLAB (1-888-478-4522) (toll free in USA), or 1(312) 455-8498 (outside USA)
E: proteintech@ptglab.com
W: ptglab.com

This product is exclusively available under Proteintech Group brand and is not available to purchase from any other manufacturer.

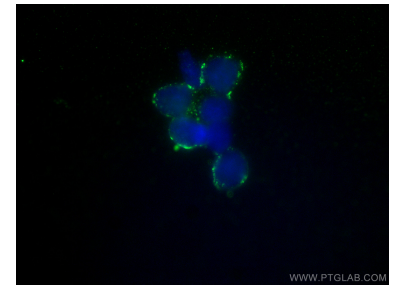
Données de validation sélectionnées



Y79 cells were subjected to SDS PAGE followed by western blot with 60326-1-Ig (Bestrophin-1 antibody) at dilution of 1:1000 incubated at room temperature for 1.5 hours.



WB result of Bestrophin-1 antibody (60326-1-Ig; 1:1000; room temperature for 1.5 hours) with negative control and Bestrophin-1 overexpressed Transfected HEK-293 cells.



Immunofluorescent analysis of (4% PFA) fixed Y79 cells using Bestrophin-1 antibody (60326-1-Ig, Clone: 4D5F1) at dilution of 1:400 and CoraLite®488-Conjugated AffiniPure Goat Anti-Mouse IgG(H+L).