

À des fins de recherche uniquement

# Anticorps Monoclonal anti-EEF1B2

Numéro de catalogue: 60329-1-Ig **Phare**



## Informations de base

<b>Numéro de catalogue:</b> 60329-1-Ig	<b>Numéro d'acquisition GenBank:</b> BC000211	<b>Méthode de purification:</b> Purification par protéine G
<b>Taille:</b> 150ul, Concentration: 1800 µg/ml by Nanodrop and 1000 µg/ml by Bradford method using BSA as the standard;	<b>Identification du gène (NCBI):</b> 1933	<b>CloneNo.:</b> 3E1C11
<b>Hôte:</b> Mouse	<b>Nom complet:</b> eukaryotic translation elongation factor 1 beta 2	<b>Dilutions recommandées:</b> WB 1:2000-1:10000 IF 1:50-1:500
<b>Isotype:</b> IgG1	<b>MW calculé:</b> 25 kDa	
<b>Immunogen Catalog Number:</b> AG0135	<b>MW observés:</b> 30-34 kDa	

## Applications

### Applications testées:

IF, WB, ELISA

### Spécificité de l'espèce:

Humain, rat, souris

### Contrôles positifs:

**WB :** cellules HeLa, cellules HEK-293, cellules HepG2, cellules HSC-T6, cellules Jurkat, cellules K-562, cellules NIH/3T3, cellules PC-12, cellules RAW 264.7

**IF :** cellules HeLa,

## Informations générales

In eukaryotes, the translation elongation factor eEF1A responsible for transporting amino-acylated tRNA to the ribosome forms a higher-order complex, eEF1H, with its guanine-nucleotide-exchange factor eEF1B. eEF1B consists of three subunits: eEF1B alpha, eEF1B beta and eEF1B gamma. The eEF1B2 possess the nucleotide-exchange activity. Although several models on the basis of in vitro experiments have been proposed for the macromolecular organization of the eEF1H complex, these models differ in various aspects. The human eukaryote elongation factor 1 beta 2 (eEF1B2) migrated as a 30-34 kDa protein in SDS-PAGE.

## Stockage

### Stockage:

Stocker à -20°C. Stable pendant un an après l'expédition.

### Tampon de stockage:

PBS avec azoture de sodium à 0,02 % et glycérol à 50 % pH 7,3

L'aliquotage n'est pas nécessaire pour le stockage à -20C

\*\*\* Les 20ul contiennent 0,1% de BSA.

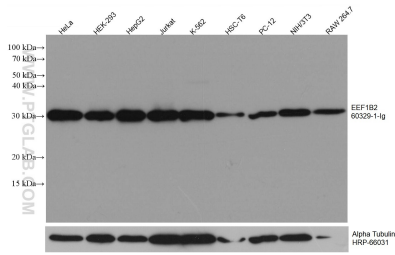
For technical support and original validation data for this product please contact:

T: 1 (888) 4PTGLAB (1-888-478-4522) (toll free in USA), or 1(312) 455-8498 (outside USA)

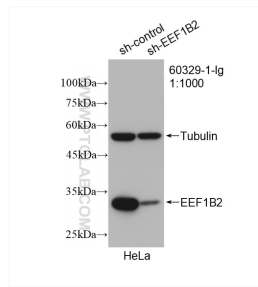
E: proteintech@ptglab.com  
W: ptglab.com

This product is exclusively available under Proteintech Group brand and is not available to purchase from any other manufacturer.

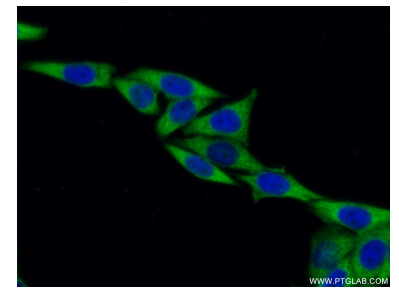
## Données de validation sélectionnées



Various lysates were subjected to SDS PAGE followed by western blot with 60329-1-Ig (EEF1B2 antibody) at dilution of 1:5000 incubated at room temperature for 1.5 hours. The membrane was stripped and reblotted with HRP-conjugated Alpha Tubulin Monoclonal antibody (HRP-66031) as loading control.



WB result of EEF1B2 antibody (60329-1-Ig: 1:1000; incubated at room temperature for 1.5 hours) with sh-Control and sh-EEF1B2 transfected HeLa cells.



Immunofluorescent analysis of (-20°C Ethanol ) fixed HeLa cells using 60329-1-Ig(EEF1B2 antibody) at dilution of 1:100 and Alexa Fluor 488-conjugated AffiniPure Goat Anti-Mouse IgG(H+L).