

À des fins de recherche uniquement

Anticorps Monoclonal anti-TMEM106B



Numéro de catalogue: 60333-1-Ig

Phare

4 Publications

Informations de base

Numéro de catalogue:

60333-1-Ig

Numéro d'acquisition GenBank:

BC033901

Méthode de purification:

Purification par protéine G

Taille:

150ul, Concentration: 2000 µg/ml by Nanodrop and 1480 µg/ml by Bradford method using BSA as the standard;

Identification du gène (NCBI):

54664

CloneNo.:

5D1F8

Hôte:

Mouse

Nom complet:

transmembrane protein 106B

Dilutions recommandées:

WB 1:5000-1:50000

IP 0.5-4.0 ug for IP and 1:500-1:1000 for WB

Isotype:

IgG1

MW calculé

31 kDa

MW observés:

~40 kDa

Immunogen Catalog Number:

AG21448

Applications

Applications testées:

IP, WB, ELISA

Demandes citées:

IHC, WB

Spécificité de l'espèce:

Humain

Espèces citées:

Humain

Contrôles positifs:

WB : cellules U2OS, cellules A549, cellules HeLa, cellules Jurkat, cellules K-562, cellules LNCaP

IP : cellules HeLa,

Informations générales

TMEM106B is a genetic risk factor for frontotemporal lobar degeneration with TDP-43 inclusions (FTLD-TDP). Amyotrophic lateral sclerosis (ALS), like FTLD-TDP, is characterized by pathological TDP-43 inclusions. TMEM106B expression in the brain may be linked to mechanisms of disease in FTLD-TDP and risk alleles confer genetic susceptibility by increasing gene expression.

Publications notables

Autrice	Pubmed ID	Journal	Application
Andrew Chang	35247328	Cell	IHC
Jolien Perneel	36527486	Acta Neuropathol	IHC
Claudia S Bauer	36619668	Front Cell Neurosci	WB

Stockage

Stockage:

Stocker à -20°C. Stable pendant un an après l'expédition.

Tampon de stockage:

PBS avec azoture de sodium à 0,02 % et glycérol à 50 % pH 7,3

L'aliquotage n'est pas nécessaire pour le stockage à -20C

*** Les 20ul contiennent 0,1% de BSA.

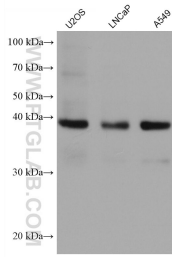
For technical support and original validation data for this product please contact:

T: 1 (888) 4PTGLAB (1-888-478-4522) (toll free in USA), or 1(312) 455-8498 (outside USA)

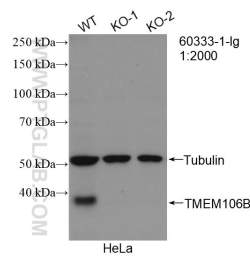
E: proteintech@ptglab.com
W: ptglab.com

This product is exclusively available under Proteintech Group brand and is not available to purchase from any other manufacturer.

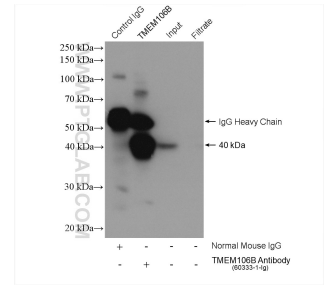
Données de validation sélectionnées



Various lysates were subjected to SDS PAGE followed by western blot with 60333-1-Ig (TMEM106B antibody) at dilution of 1:10000 incubated at room temperature for 1.5 hours.



WB result of TMEM106B antibody (60333-1-Ig; 1:2000; room temperature for 1.5 hours) with wild-type and TMEM106B knockout HeLa cells.



IP result of anti-TMEM106B(IP:60333-1-Ig, 5ug; Detection:60333-1-Ig 1:500) with HeLa cells lysate 1720 ug.