

À des fins de recherche uniquement

Anticorps Monoclonal anti-CD106

Numéro de catalogue: 65049-1-Ig



Informations de base

Numéro de catalogue: 65049-1-Ig	Numéro d'acquisition GenBank: BC017276	Méthode de purification: Purification par affinité
Taille: 100ug, 0.1 mg/ml	Identification du gène (NCBI): 7412	CloneNo.: 1.G11B1
Hôte: Mouse	Nom complet: vascular cell adhesion molecule 1	
Isotype: IgG1	MW calculé 739 aa, 81 kDa	

Applications

Applications testées:
FC
Spécificité de l'espèce:
Humain

Informations générales

Vascular cell adhesion molecule 1 (VCAM1), also known as CD106, is a 110-kDa transmembrane glycoprotein belonging to the immunoglobulin gene superfamily. VCAM1 is expressed by cytokine-activated endothelium, interacts with integrin VLA4 ($\alpha 4\beta 1$) present on the surface of leukocytes, and mediates both adhesion and signal transduction. It is also expressed either constitutively or inducibly in a variety of other cell types, including vascular smooth muscle cells, differentiating skeletal muscle cells, renal and neural epithelial cells, macrophages (Kupffer cells), dendritic cells, and bone marrow stromal cells (PMID: 7507076, 11359843).

Stockage

Stockage:
Stocker à une température comprise entre 2 °C et 8 °C.
Tampon de stockage:
Solution saline tamponnée au borate, pH 8,2.

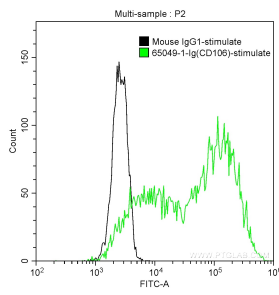
For technical support and original validation data for this product please contact:

T: 1 (888) 4PTGLAB (1-888-478-4522) (toll free
in USA), or 1(312) 455-8498 (outside USA)

E: proteintech@ptglab.com
W: ptglab.com

This product is exclusively available under Proteintech Group brand and is not available to purchase from any other manufacturer.

Données de validation sélectionnées



1X10⁶ TNF-alpha treated HUVEC cells were surface stained with 0.25 ug Anti-Human CD106 (65049-1-Ig, Clone: 1.G11B1) and CoraLite®488-Conjugated AffiniPure Goat Anti-Mouse IgG(H+L) at dilution 1:1000 (green), or stained with 0.25 ug mouse IgG1 isotype control and CoraLite®488-Conjugated AffiniPure Goat Anti-Mouse IgG(H+L) at dilution 1:1000 (black). Cells were not fixed.