

À des fins de recherche uniquement

Anticorps Monoclonal anti-CD11b

Numéro de catalogue: 65055-1-Ig **1 Publications**



Informations de base

Numéro de catalogue: 65055-1-Ig	Numéro d'acquisition GenBank: BC156991	Méthode de purification: Purification par affinité
Taille: 500ug, 0.5 mg/ml	Identification du gène (NCBI): 16409	CloneNo.: M1/70
Hôte: Rat	Nom complet: integrin alpha M	
Isotype: IgG2b, kappa		

Applications

Applications testées:
FC

Demandes citées:
FC

Spécificité de l'espèce:
Humain, souris

Espèces citées:
souris

Informations générales

Integrins are cell adhesion receptors that are heterodimers composed of non-covalently associated α and β subunits (PMID: 9779984). CD11b, also known as Integrin alpha M or CR3A, belongs to the integrin alpha chain family. CD11b forms an α/β heterodimer with CD18 (integrin β 2). CD11b/CD18 is implicated in various adhesive interactions of monocytes, macrophages and granulocytes as well as in mediating the uptake of complement-coated particles and pathogens (PMID: 9558116; 20008295). CD11b/CD18 is a receptor for the complement protein fragment iC3b, and is also a receptor for fibrinogen, factor X and ICAM1 (PMID: 2971974; 15485828).

Publications notables

Autrice	Pubmed ID	Journal	Application
Wenxuan Xu	36134371	Nanoscale Adv	FC

Stockage

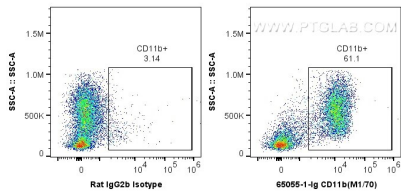
Stockage:
Store at 2-8°C. Stable for one year after shipment.

Tampon de stockage:
Solution saline tamponnée au borate, pH 8,2.

For technical support and original validation data for this product please contact:
T: 1 (888) 4PTGLAB (1-888-478-4522) (toll free in USA), or 1(312) 455-8498 (outside USA)
E: proteintech@ptglab.com
W: ptglab.com

This product is exclusively available under Proteintech Group brand and is not available to purchase from any other manufacturer.

Données de validation sélectionnées



1X10⁶ mouse bone marrow cells were surface stained with 0.2 ug Anti-Mouse CD11b (65055-1-Ig, Clone: M1/70) and FITC-Goat anti-Mouse IgG at dilution 1:100, or 0.2 ug Isotype Control and FITC-Goat anti-Mouse IgG at dilution 1:100. Cells were not fixed.